

Eric Baker
Estill County Extension
Agent for Agriculture
& Natural Resources

New Pest Threatens Small Fruit Production

causing problems for berry producers by the middle of July. Bessin said he's received reports of the insect from all over the state. While the fruit fly's primary target is small fruits, including berries and grapes, it is also known to attack cherries, tomatoes and peaches in other states. "Fortunately, all of the state's strawberries and most of the blueberry crop were already harvested before it appeared this year," Bessin said. "Later season berries, including blackberries and raspberries, are going to be extremely susceptible."

As many small fruits begin to ripen, home gardeners need to be on the lookout for a new insect pest, said Ric Bessin, Extension Entomologist with the University of Kentucky College of Agriculture, Food and Environment.

Spotted wing drosophila was detected for the first time in two UK integrated pest management traps in 2012. This year, the fruit fly first appeared in the state at the end of June and was

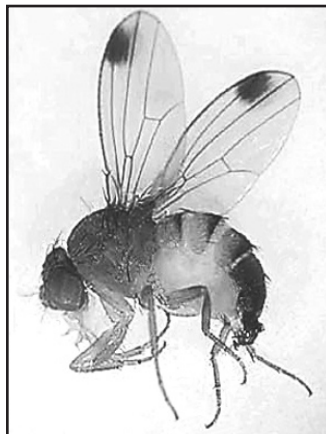
The spotted wing drosophila differs from other fruit flies in that the females will slice into nearly ripe, healthy fruit and lay their eggs just below the fruit skin. Other fruit flies are typically attracted to rotting or over-ripe fruits or vegetables. A spotted wing drosophila can complete a generation in as little as a week and is so tiny that growers may not notice they have a problem until the fruit starts to soften or mag-

gots emerge. Spotted wing drosophilas are most active when temperatures are between 68 and 86 degrees Fahrenheit.

Gardeners, who want to maintain yields in their small crops, have a couple of insecticides available to them. However, they need to make sure they carefully read the product's label and follow the pre-harvest intervals, which is the time between insecticide application and when the fruit can safely be harvested, Bessin said.

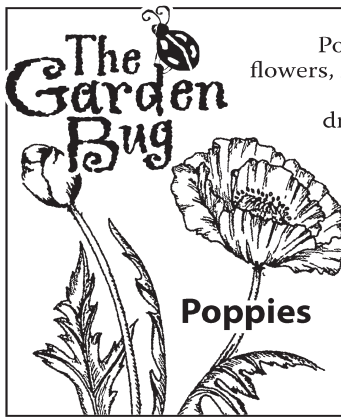
Gardeners should remove overripe and damaged berries from around their plants at least every other day, as they could be infested with the insect. Burying infested fruit is not helpful, as the insect has been known to emerge from the soil after very deep burials. To kill spotted wing drosophila, place infested fruit in clear plastic bags and leave the bags in the sun.

The insect appears to overwinter very well in the



United States and will develop on wild host plants including wild brambles, pokeweed and honeysuckle. Removing these plants from the landscape should help home gardeners keep pest populations to a minimum, Bessin said.

The UK Cooperative Extension Service has two publications related to spotted wing drosophila biology, identification, monitoring and management. For a copy of the publication, contact the Estill County Extension Service at 606-723-4557.



Poppies can be grown for their flowers, for food and to make opium, a medicinal and recreational drug used since ancient times.

Following the trench warfare of WWI which took place in the poppy fields of Flanders, red poppies have become a symbol of remembrance of soldiers who died during wartime.

- Brenda Weaver
Source: wikipedia.org

Agriculture Events

Tuesdays, 3-7, and Senior Day, 2nd Tuesday, 10-2

Estill County Farmers' Market

The Estill County Farmers' Market is now open on Tuesdays from 3 p.m. to 7 p.m. On the second Tuesday of each month market hours are 10 a.m. to 2 p.m. This is Senior Day, but it is not limited to seniors; all are welcome. The market is also open on Fridays from 8 a.m. to 1 p.m. The market could close sooner if vendors sell out, so customers are advised to come early for best selection.

Thursday, August 22nd @ 7:00 pm

Organic Gardening Seminar

If you are interested in organic gardening information, please attend our Organic Gardening Practices Seminar on Thursday, August 22, 7:00 p.m., at the Estill County Extension Office, 76 Golden Court (off Stacy Lane), in Irvine. Kentucky Department of Agriculture Organic Program Manager Adam Watson will discuss organic terminology, organic garden practices, and discuss organic certification process. Call the Extension office if you need more information.

DANNY NEWMAN

Now Hauling Gravel for Tipton Ridge Quarry
Single-Axle Dump Truck
Loads Range From 1 to 12 Tons
(606) 723-9816 or
(606) 643-6118

PAINTED ROOFING METAL

We offer 16 colors of our #1 grade metal roofing tin cut to the inch. Now with a 40-year warranty, this ensures a roof that will last for years. We also have 29 gauge Galvalume. We carry all metal roofing accessories! Phone in or Fax orders welcome Call 606-593-7080 • Fax 606-593-7071 or stop by

Wolf Creek Metal

Open five days for your convenience
Mon.-Fri. 8am-5pm
LOCATED 1.5 miles south of Booneville, KY on Hwy. 11 in the Lone Oak Industrial Park

BARNES SANITATION

Our Business Is Picking Up!

Call 723-8421
Weekly Garbage Pickups at Reasonable Rates

Payment Office: Terry Barnes
104 River Drive Owner/Operator
Irvine, Kentucky John 3:16

FARM SERVICE AGENCY AGRICULTURE NEWS

Richmond FSA Service Center
1024 Ival James Blvd., Ste A-2
Call 888-758-6909

Producers Late Reporting Fees Waived

FSA reminds producers that after July 15th, crop reporting will be considered late file; however, the late file fee will be waived for the 2013 crop year for crops reported July 15, through September 15. Producers are reminded that September 16 is the final signature date for signing the DCP Contract (grain bases), an extension of the August 2 date.

Prevented Planting or Failed Acreage

To report prevented or failed acreage, producers must complete Form CCC-576, Notice of Loss for applicable crops. Reporting prevented or failed acreage to FSA will ensure compliance with current farm programs, and possible eligibility for future disaster programs. If producer misses the reporting deadline for prevented planting, they may still report prevented planting acreage as long as the disaster condition may be verified by a field visit and a late filing fee is paid.

2014 Reporting

Reporting forage crops and pastures is also required. For 2014, perennial forage, fall wheat, and other fall seeded small grains will have a December 15, 2013 reporting date.

For questions regarding crop certification and crop loss reports, please contact the FSA office at: 859-624-1980 or Toll Free 1-888-758-6909

Stickeler's Answer

Stickelers Answer

Each typist types 1 page in 5 minutes.
One typist would type 20 pages
in 5 x 20 = 100 minutes.
Therefore you need 100/10 = 10 typists to
type 20 pages in 10 minutes.

Willis Estes Realty and Auction, Inc.

1480 White Oak Road
Irvine, Kentucky 40336
Phone 606-723-6925 • Fax 775-227-0814
Email <Willis@WillisEstes.Com> www.WillisEstes.Com



Wishing Well®

7	3	5	7	3	8	3	2	5	7	2	7	5
C	B	V	H	E	D	S	A	I	E	S	R	S
4	6	5	7	6	7	5	8	6	7	2	7	5
B	A	I	S	S	T	O	S	H	K	L	N	
6	5	2	7	6	5	4	7	2	6	5	2	3
I	E	F	O	S	W	E	V	O	T	P	R	T
7	8	6	4	6	2	7	2	8	4	2	8	4
E	F	A	O	N	A	D	D	O	P	V	R	E
6	2	5	6	5	8	2	4	6	8	2	6	8
C	I	L	E	A	O	C	N	R	T	E	E	H
4	7	6	5	6	4	8	7	3	8	4	6	8
T	O	C	C	E	O	E	N	R	R	L	I	S
3	7	3	6	7	6	5	4	3	4	6	5	4
O	E	N	V	S	E	E	I	G	F	D	S	E

HERE IS A PLEASANT LITTLE GAME that will give you a message every day. It's a numerical puzzle designed to spell out your fortune. Count the letters in your first name. If the number of letters is 6 or more, subtract 4. If the number is less than 6, add 3. The result is your key number. Start at the upper left-hand corner and check one of your key numbers, left to right. Then read the message the letters under the checked figures give you.

© 2013 King Features Synd., Inc. All rights reserved

CryptoQuote

AXYDLBAAXR
is **LONGFELLOW**
One letter stands for another. In this sample, **A** is used for the three L's, **X** for the two O's, etc. Single letters, apostrophes, the length and formation of the words are all hints. Each week the code letters are different.

I Z S N B V G S N F G E, X U E D L
I Z S N B N A N G G; V N F R S
S R S F E H D F Y J S U D F S E D L
G S A X A U N G G.
- D G X R S F H S K Y S G G T D G P S I

© 2013 King Features Synd., Inc.

CryptoQuip

This is a simple substitution cipher in which each letter used stands for another. If you think that X equals O, it will equal O throughout the puzzle. Solution is accomplished by trial and error.
Clue: J equals W

T J C H P D I, J C F Q P N
K O C I W K S N K W D I J Z C S N Q Q K
K C E D M T B B N E D M D S C H K T P D I D P
W Z D S C F I W I D O C I W D I ?

© 2013 King Features Synd., Inc.

Puzzle Answers August 14, 2013

Puzzles4Kids Answer

Riddle Answer: You can hear a pin drop.

FEAR & KNIGHT answer

Letter Box Solution

N	P	B	T	R	I	E	U	L
T	U	E	L	B	P	N	R	I
R	I	L	U	E	N	T	P	B
B	L	U	E	P	R	I	N	T
E	T	P	I	N	L	U	B	R
I	R	N	B	T	U	P	L	E
U	B	T	P	L	E	R	I	N
P	E	R	N	I	B	L	T	U
L	N	I	R	U	T	B	E	P

Even Exchange answers

- Ringer, Ranger
- Chose, Chore
- Minor, Miner
- Porch, Perch
- Nestle, Nettle
- Liner, Linen
- Thread, Threat
- Pillow, Willow
- Ample, Amble
- Guide, Guise

Weekly SUDOKU Answer

6	8	4	5	3	7	1	9	2
9	7	2	1	4	8	5	6	3
3	1	5	9	6	2	7	8	4
7	2	3	4	8	6	9	1	5
4	9	1	7	5	3	8	2	6
8	5	6	2	9	1	4	3	7
1	6	9	3	7	4	2	5	8
2	3	7	8	1	5	6	4	9
5	4	8	6	2	9	3	7	1

King Crossword Answer

Solution time: 25 mins.

S	T	R	E	C	A	M	D	H	O	W
A	D	E	N	A	L	I	E	E	R	O
R	E	A	M	I	L	L	B	A	B	E
I	M	P	A	I	R	L	A	U	D	
C	L	A	S	P	R	O	Y	E	G	O
L	O	V	E	W	I	N	S	A	L	E
E	K	E	O	I	L	A	P	R	I	L
F	I	R	I	N	G	L	I	N	E	
A	N	E	W	A	T	L	A	S	T	
S	A	G	A	A	T	M	L	I	A	R
E	D	E	N	A	T	O	B	E	D	G
C	O	D	E	S	O	S	D	E	S	K

Bible Trivia Answers

Casey's trivia book "Know It? ... or Not?" is available from BearManorMedia.com

ANSWERS: (1) Neither; (2) Job; (3) Horeb; (4) Laughing; (5) The Word; (6) Woolites