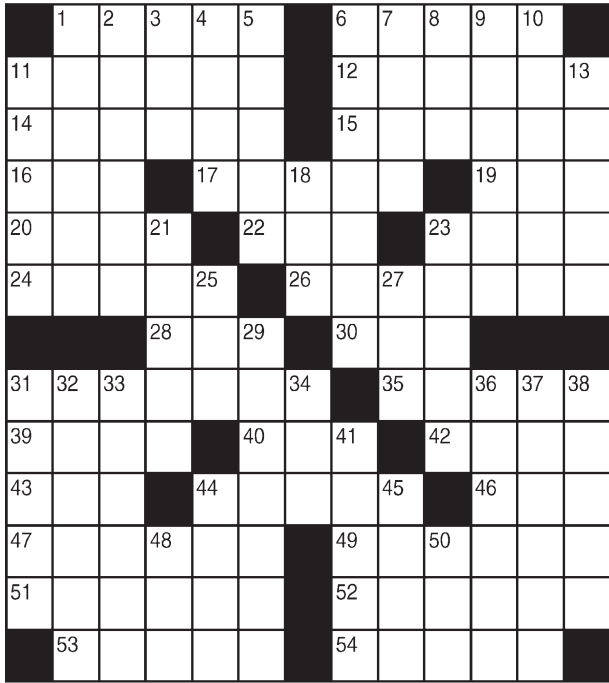


King Crossword

ACROSS

- 1 Thick slices
- 6 Modeling materials
- 11 John le Carre spy
- 12 Excursion
- 14 Impede
- 15 RV
- 16 Scepter topper
- 17 Cleavage-hiding scarf
- 19 Shell game need
- 20 "So be it"
- 22 "You've got mail" co.
- 23 Bacterium
- 24 Suitable for singing
- 26 Nobility member
- 28 Enjoyment
- 30 Hearty quaff
- 31 Parlor pieces
- 35 Phi Beta —
- 39 Quarry
- 40 30-Across provider
- 42 Mountain lake
- 43 Anger
- 44 Wheat bundle
- 46 Central
- 47 Monkey (with)
- 49 Put a — on (deaden)



- 51 Sound system
- 52 Lubricate
- 53 Decorate
- 54 Dadaist Max

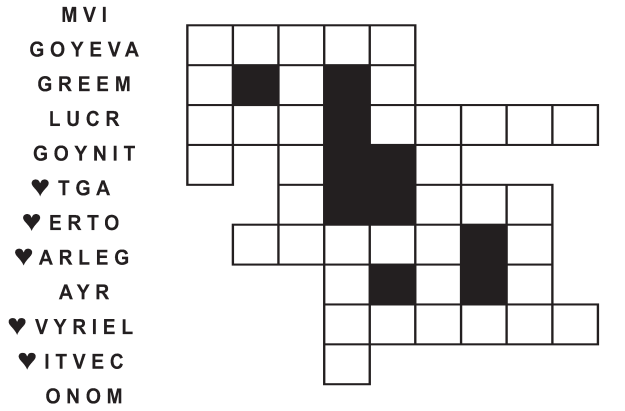
- 51 Sound system
- 52 Lubricate
- 53 Decorate
- 54 Dadaist Max
- winding print
- 8 \$ dispenser
- 9 "Hooray!"
- 10 Villainous looks
- 11 Sandbar
- 13 Metric measures
- 18 Officer of the law
- 21 Swell
- 23 Terrific
- 25 Prompt
- 27 Wapiti
- 29 Kidney component
- 31 Skewers
- 32 Mistakes in
- 33 Abounded
- 34 Seek restitution
- 36 South American plains
- 37 Mass figure
- 38 Violinist Rieu
- 41 18-Down's emblem
- 44 Prophet
- 45 Jamie of "M*A*S*H"
- 48 Expert
- 50 Chaps

© 2014 King Features Synd., Inc.

FEAR KNOT

By: rj johnson

CONQUER THE WHIRLED

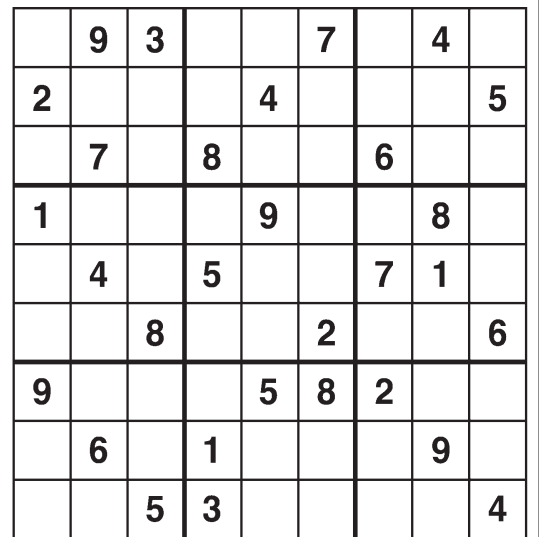


Unscramble these twelve letter strings to form each into an ordinary word (ex. HAGNEC becomes CHANGE). Prepare to use only ONE word from any marked (♥) letter string as each unscrambles into more than one word (ex. ♥RATHE becomes HATER or EARTH or HEART). Fit each string's word either across or down to knot all twelve strings together.

© 2014 King Features Syndicate. All rights reserved.

Weekly SUDOKU

by Linda Thistle



Place a number in the empty boxes in such a way that each row across, each column down and each small 9-box square contains all of the numbers from one to nine.

DIFFICULTY THIS WEEK: ★★

★ Moderate ★★ Challenging
★★★ HOO BOY!

© 2014 King Features Synd., Inc.

Puzzles4Kids

by Helene Hovanec

WORD FUN

Study the two words on each line to find the ONE letter in the left column that is NOT in the word in the right column. Write the extra letter on the blank space. Then read DOWN to answer this riddle:

WHAT DO SNOWMEN SAY TO EACH OTHER WHEN THEY MEET?

- | | | | | | |
|--------|---|-------|--------|---|-------|
| PAIRED | — | DRAPE | MASCOT | — | COATS |
| SCRAPE | — | PEARS | MALICE | — | CLAIM |
| SECURE | — | CURES | TENSED | — | DENTS |
| THREAT | — | EARTH | STREET | — | RESET |
| BROWSE | — | BREWS | FROSTY | — | FORTS |
| | | | SOURCE | — | CURSE |
| | | | UNWISE | — | SWINE |

For more puzzle fun, go to www.brainzles.com

Just Like Cats & Dogs

by Dave T. Phipps



MAGIC MAZE • SPORTS MOVES

U E Y B Y Y V S P M J H E B Y
 V L T A A Q D O L I T G D B Y
 W T L A L L E Y O O P T I O N
 B R P O E P K M H G Z K I F D
 B O Y W R U E S T D S T Q O M
 F F O K C I P Z O N K I I F D
 B Z N T X A W B E A N B A L L
 U U S Q L O (F A D E A W A Y) B
 D N E S R E V E R V U L J H F
 D C A Y W V G T A I S Q Q P N
 L K I H F E C B G G Z Y S W V

Find the listed words in the diagram. They run in all directions forward, backward, up, down and diagonally.

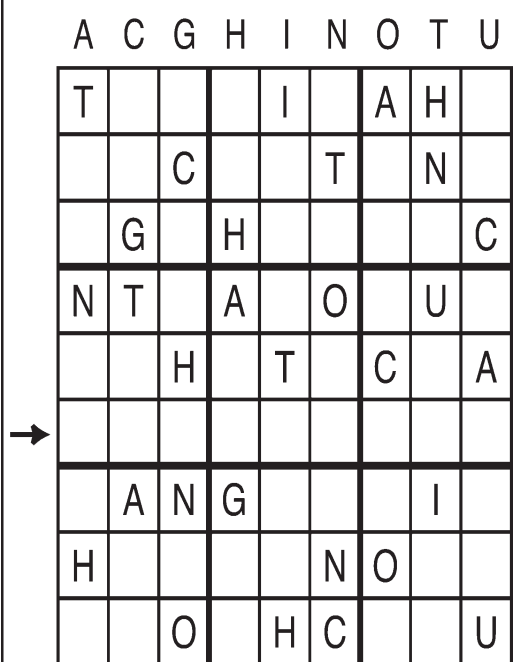
- | | | | |
|-----------|-------------|---------|--------------|
| Alley-oop | Deke | Option | Slapshot |
| Beanball | Dunk | Pickoff | Squeeze play |
| Blitz | Fadeaway | Relay | Toe drag |
| Bootleg | Give and go | Reverse | |

© 2014 King Features Synd., Inc. All rights reserved

Letter Box

by Linda Thistle

Place a letter in the empty boxes in such a way that each row across, each column down and each small 9-box square contains all of the letters listed above the diagram. When completed, the row indicated will spell out a word or words.



Even Exchange

by Donna Pettman

Each numbered row contains two clues and two 6-letter answers. The two answers differ from each other by only one letter, which has already been inserted. For example, if you exchange the A from MASTER for an I, you get MISTER. Do not change the order of the letters.

- | | | | |
|-------------------------|---------------|--------------------|---------------|
| 1. Freight | C _ _ _ _ _ | North Dakota city | F _ _ _ _ _ |
| 2. Dog lead | _ _ _ _ _ H | Lowest amount | _ _ _ _ _ T |
| 3. Baryshnikov's dance | B _ _ _ _ _ | Billfold | W _ _ _ _ _ |
| 4. Surpass expectations | _ _ _ C _ _ _ | Kick out of school | _ _ _ P _ _ _ |
| 5. Pool table pouch | _ _ O _ _ _ _ | Fence style | _ _ I _ _ _ _ |
| 6. Fire starter | _ _ L _ _ _ _ | Indistinct | _ _ A _ _ _ _ |
| 7. Greek capital | _ _ _ _ _ S | Goddess of wisdom | _ _ _ _ _ A |
| 8. Schoolyard meanie | _ _ _ L _ _ _ | Muscular | _ _ _ R _ _ _ |
| 9. Small stream | _ _ _ _ _ K | Belief | _ _ _ _ _ D |
| 10. Lumberjack | _ _ _ G _ _ _ | Hotel guest | _ _ _ _ _ D |

© 2014 King Features Synd., Inc.

Salome's Stars

ARIES (March 21 to April 19) Taking some time out of your usually busy social life could be just what you need to help you focus on putting those finishing touches on your plans for a possible career change.

TAURUS (April 20 to May 20) A misunderstanding about a colleague's suggestions could create a delay in moving on with your proposal. But by week's end, all the confusing points should finally be cleared up.

GEMINI (May 21 to June 20) You might feel overwhelmed by all the tasks you suddenly have to take care of. But just say the magic word — help! — and you'll soon find others rushing to offer much-needed assistance.

CANCER (June 21 to July 22) Finishing a current project ahead of schedule leaves you free to deal with other upcoming situations, including a possible workplace change, as well as a demanding personal matter.

LEO (July 23 to August 22) Turn that finetuned feline sensitivity radar up to high to help uncover any facts that could influence a decision you might be preparing to make. Devote the weekend to family activities.

VIRGO (August 23 to September 22) A state of confusion is soon cleared up with explanations from the responsible parties. Don't waste time chastising anyone. Instead, move forward with your plans.

LIBRA (September 23 to October 22) You might feel obligated to help work out a dispute between family members. But this is one of those times when you should step aside and let them work out their problems on their own.

SCORPIO (October 23 to November 21) Your ability to resolve an on-the-job problem without leaving too many ruffled feathers earns you kudos from co-workers. You also impress major decision-makers at your workplace.

SAGITTARIUS (November 22 to December 21) Newly made and long-held friendships merge well, with possibly one exception. Take time to listen to the dissenter's explanations. You could learn something important.

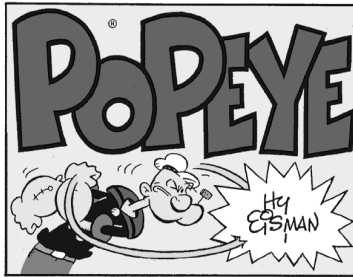
CAPRICORN (December 22 to January 19) Be prepared to be flexible about your current travel plans. Although you don't have to take them, at least consider suggestions from the experts in the travel business.

AQUARIUS (January 20 to February 18) A problem with a recent financial transaction could lead to more problems later on unless you resolve it immediately. Get all the proof you need to support your position.

PISCES (February 19 to March 20) Day-dreaming makes it difficult to stay focused on what you need to do. But reality sets in by midweek, and you manage to get everything done in time for a relaxing weekend.

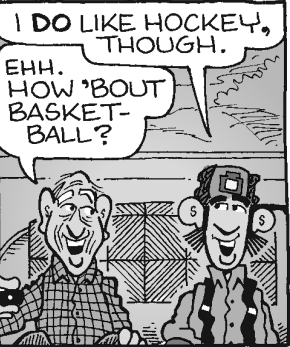
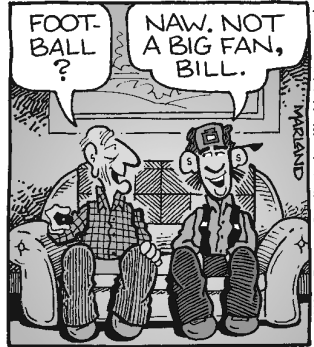
BORN THIS WEEK: Your ability to reach out to those in need of spiritual comfort makes you a much-revered, much-loved person in your community.

© 2013 King Features Syndicate Inc.



R.F.D.

by Mike Marland



Amber Waves

by Dave T. Phipps



The Spats

by Jeff Pickering

