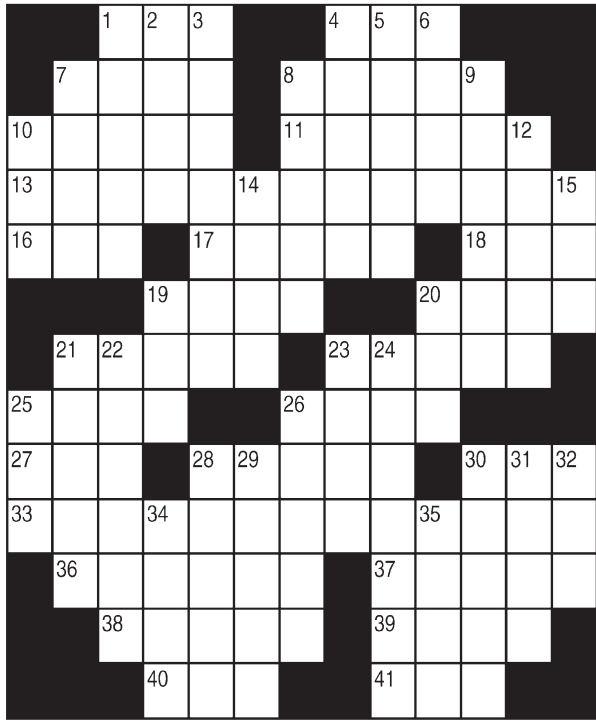


King Crossword

ACROSS

- 1 — de deux
- 4 Rotating part
- 7 St. Louis landmark
- 8 Sorcerer
- 10 Durable wood
- 11 Obliterated
- 13 Jake and Elwood
- 16 Foundation
- 17 Kin of linen
- 18 Also
- 19 Accomplishment
- 20 Fragment
- 21 Scrub, as a space mission
- 23 Old-hat
- 25 Pitcher type
- 26 Taverns
- 27 Petrol
- 28 Wails like a banshee
- 30 School org.
- 33 Golf course maintenance crew
- 36 Concoct
- 37 Canonical hour
- 38 Small plateaus
- 39 Rooster
- 40 Bashful



DOWN

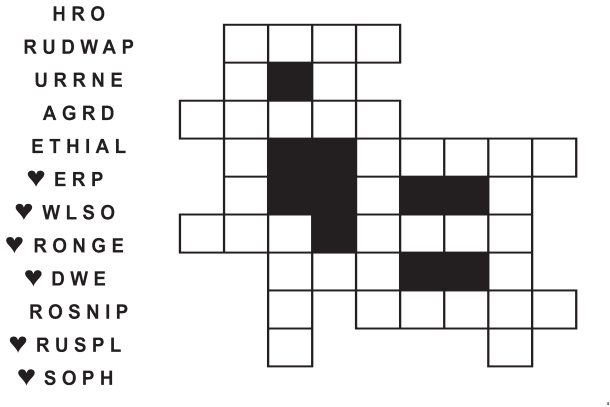
- 1 Exultant
- 2 Teen's complexion
- 3 Unscrupulous lawyer
- 4 Yuletide rendition
- 5 Playing marble
- 6 Dog-sledding "giddyap"
- 7 Competent
- 8 Deserve
- 9 Boil short
- 10 Recede
- 12 R2-D2, e.g.
- 14 Lake vessel
- 15 Bribe
- 19 Supporting
- 20 Dol. fractions
- 21 Prize
- 22 Suit, old-style
- 23 Sand formation
- 24 Lack
- 25 Ovum
- 26 Chinese dogs, for
- 28 Deli turnover
- 29 English homework, often
- 30 Pound pieces
- 31 "Star —"
- 32 Fool
- 34 Prior nights
- 35 Indigent

© 2015 King Features Synd., Inc.

FEAR KNOT

By: rj johnson

CONQUER THE WHIRLED

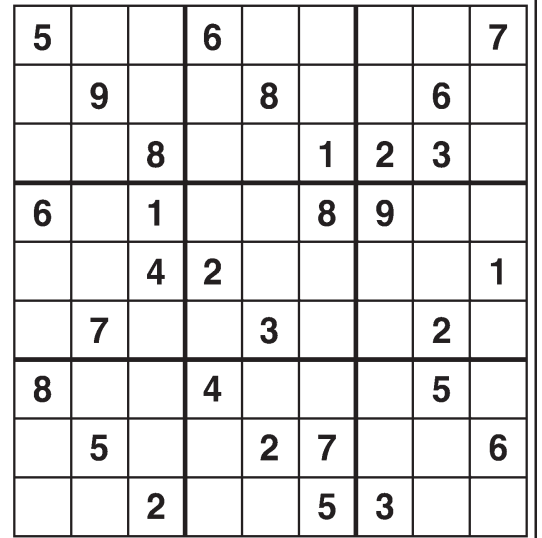


Unscramble these twelve letter strings to form each into an ordinary word (ex. HAGNEC becomes CHANGE). Prepare to use only ONE word from any marked (♥) letter string as each unscrambles into more than one word (ex. ♥RATHE becomes HATER or EARTH or HEART). Fit each string's word either across or down to knot all twelve strings together.

NEW! 30 Fear Knot puzzles \$3.50 • Six Volumes • Order at rbmall.com

Weekly SUDOKU

by Linda Thistle



Place a number in the empty boxes in such a way that each row across, each column down and each small 9-box square contains all of the numbers from one to nine.

DIFFICULTY THIS WEEK: ★

★ Moderate ★★ Challenging
★★★ HOO BOY!

© 2015 King Features Synd., Inc.

Puzzles4Kids

by Helene Hovanec

CODED RIDDLE

Change each letter to the one that comes immediately BEFORE it in the alphabet to find a riddle and its answer.

Here's a copy of the alphabet to guide you:

A B C D E F G H I J K L M N O P Q R S T U V W X Y Z

I P X E P S B O D I X P S L F S T H F U B

M P U P G M B V H I T ? U I F Z I P S T F

B S P V O E .

For more puzzle fun, go to www.brainzles.com

Just Like Cats & Dogs

by Dave T. Phipps



MAGIC MAZE ● — ROSE

I Y V S S Q N K H E B Y W T R
O L J G G A E B T Y W U R P N
K I G D R B M Z R X V E S Q O
M E E F F O C T E K I I T G E
C A E S Y W U U S S Q L P E N
L J H K E F E N E I C R G R P
A Y X C O N F E D E R A T E V
U S Q P Y R A N M K B H J T H
F E C B K B E P Z B Y C C N X
V U A T O R T H A N I H C I Q
P B N O T T O C C J O M L W K

Find the listed words in the diagram. They run in all directions forward, backward, up, down and diagonally.

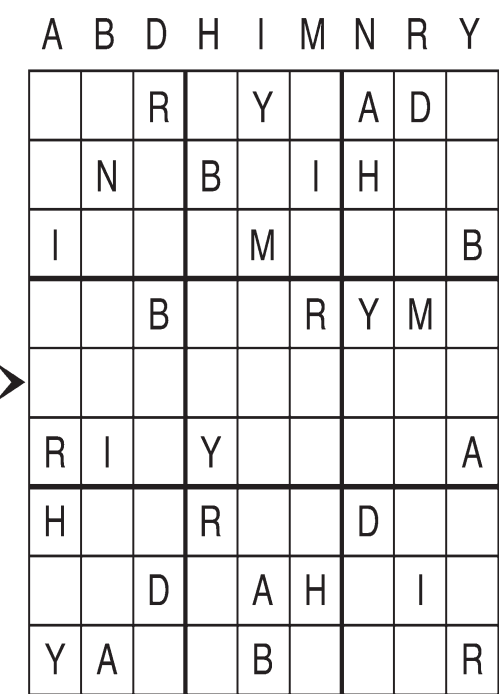
- Baby
- Cabbage
- Charlie
- Cherokee
- China
- Christmas
- Coffee
- Confederate
- Cotton
- Desert
- Ground
- Japanese
- Tea
- Tokyo
- Winter

© 2015 King Features Syndicate, Inc. All rights reserved.

Letter Box

by Linda Thistle

Place a letter in the empty boxes in such a way that each row across, each column down and each small 9-box square contains all of the letters listed above the diagram. When completed, the row indicated will spell out a word or words.



Even Exchange

by Donna Pettman

Each numbered row contains two clues and two 6-letter answers. The two answers differ from each other by only one letter, which has already been inserted. For example, if you exchange the A from MASTER for an I, you get MISTER. Do not change the order of the letters.

- 1. Tremble from fear — H — — — — Wood fragment — L — — — —
- 2. Become accustomed — A — — — — Take as one's own — O — — — —
- 3. Speak unclearly — U — — — — Be of importance — A — — — —
- 4. Bottle-dwelling sprite — — — — I — — — — Category — — — — R — — — —
- 5. Valiant B — — — — Long for C — — — —
- 6. Immigrant's NY island — — — — L — — — — Mr. Presley — — — — V — — — —
- 7. Metal alloy — — — — W — — — — Harass and tease — — — — S — — — —
- 8. Live-in babysitter — — — — N — — — — Mrs. Reagan — — — — C — — — —
- 9. Pursue — — — — H — — — — Desist — — — — E — — — —
- 10. Sweepstakes — — — — R — — — — Patterned batter cake — — — — W — — — —

© 2015 King Features Synd., Inc.

Salome's Stars

ARIES (March 21 to April 19) Having second thoughts could be a good thing, even if you're determined to go through with your plans. You might find it worthwhile to take a fresh look at how things have been set up.

TAURUS (April 20 to May 20) Financial matters could continue to be a problem until you're able to straighten out some of the more pesky situations. Once that happens, the rest should be easier to unsnarl.

GEMINI (May 21 to June 20) Family matters once again take center stage, and should be dealt with competently and quickly. And, again, insist on others taking on their fair share of the responsibilities.

CANCER (June 21 to July 22) Your creative pursuits seem to be running into a roadblock. But rather than blame outside factors, look within to see if you might be holding back your efforts for some reason.

LEO (July 23 to August 22) Keep that keen Cat's Eye focused on relevant aspects of this new situation in your life. Don't be distracted by trivial matters. You need the pertinent facts before making a decision.

VIRGO (August 23 to September 22) As much as you prefer doing things on your own, continue to accept help if you still need to resolve the problem affecting your project. Some cheerful news is about to come your way.

LIBRA (September 23 to October 22) While you might begrudge the added time it will take to get your project from point A to B to C, etc., you could benefit from the facts that will emerge over this expanded time span.

SCORPIO (October 23 to November 21) Regarding your workplace suggestions, be prepared to produce the facts to counter reactions from skeptics who feel your approach is unreasonable or even impossible.

SAGITTARIUS (November 22 to December 21) Savvy Sagittarians will look for work-related answers on their own rather than rely on unproved assumptions. It might take more time to do so, but the payoff is worth it.

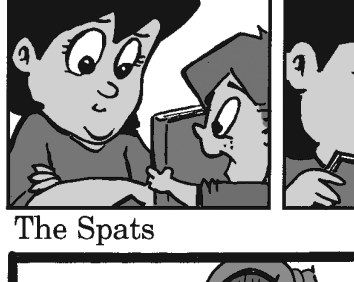
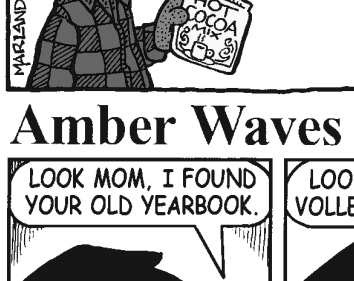
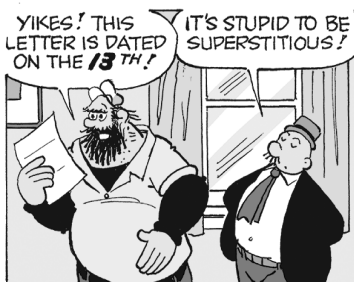
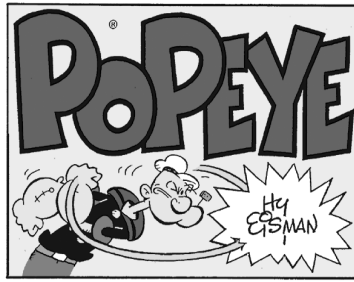
CAPRICORN (December 22 to January 19) Your aspects continue to favor family issues, with special emphasis this week on changes in and around your home. Get everyone to suggest what he or she would like to see done.

AQUARIUS (January 20 to February 18) A matter you thought had been settled might still produce surprises. Best advice: Continue to gather facts to bolster your position just in case you need to produce them quickly.

PISCES (February 19 to March 20) While your instincts are usually right when discerning 'twixt truth and deception, you could benefit from doing more research on the new "prospect" that you've been pitched.

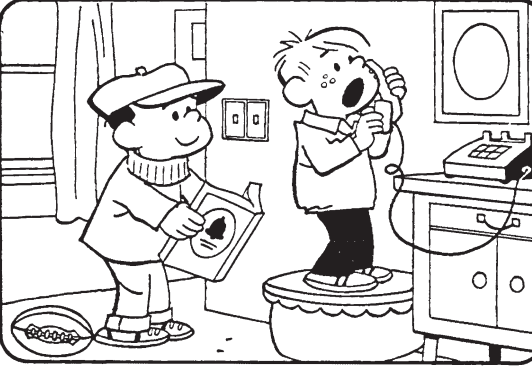
BORN THIS WEEK: Your wisdom is only matched by your generosity, making you the sort of friend everyone hopes to have.

© 2014 King Features Syndicate Inc.



HOCUS-FOCUS

BY HENRY BOLTIHOFF



Find at least six differences in details between panels.

© 2015 King Features Synd., Inc. All rights reserved.

New! 24 HOCUS FOCUS puzzles \$3.50 • 24 Volumes • Order at: rbmall.com

Amber Waves



by Jeff Pickering

© 2015 King Features Syndicate, Inc. All rights reserved.