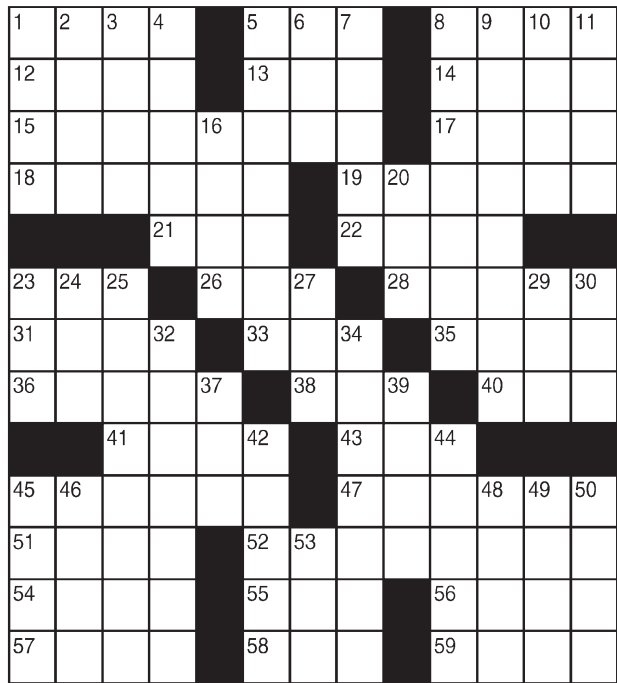


King Crossword

ACROSS

- 1 Cracker spread
- 5 Easter entree
- 8 "The Thin Man" dog
- 12 Verve
- 13 Past
- 14 Use scissors
- 15 Sudden temperature drop
- 17 — Christian Andersen
- 18 Dueler's ally
- 19 Pass by
- 21 Watch chain
- 22 Foolish
- 23 Andrews or Edwards, for ex.
- 26 Path
- 28 Gaggle members
- 31 Conks out
- 33 Joke
- 35 Paint crudely
- 36 "Yes we can" man
- 38 Off-tattooed word
- 40 Kan. neighbor
- 41 Mr. Gingrich
- 43 Tear
- 45 Curvy-horned antelope
- 47 Time of the mammoths
- 51 Churlish one
- 52 Guiding principle
- 54 Not working



- 55 Under the weather
- 56 Takeout phrase
- 57 Start a garden
- 58 Nutritional qty.
- 59 Health centers
- 5 Under the weather
- 6 Khan title
- 7 Motorized bike
- 8 Embarrassed
- 9 Crisp-pod legume
- 10 Supermarket stack
- 11 Church section
- 16 Winter forecast
- 20 Drag along
- 23 Commotion
- 24 Little white lie
- 25 Tall thin person
- 27 Thanksgiving
- 5 Purse
- 6 Khan title
- 7 Motorized bike
- 8 Embarrassed
- 9 Crisp-pod legume
- 10 Supermarket stack
- 11 Church section
- 16 Winter forecast
- 20 Drag along
- 23 Commotion
- 24 Little white lie
- 25 Tall thin person
- 27 Thanksgiving
- 29 Seek damages
- 30 "Chicago" lyricist
- 32 Slandered
- 34 Ape
- 37 Piercing tool
- 39 Cinderella's horses, really
- 42 Long-snouted critter
- 44 Nuisances
- 45 Wading bird
- 46 Fashion
- 48 On
- 49 Infatuated
- 50 Cupid's alias
- 53 Antiquated

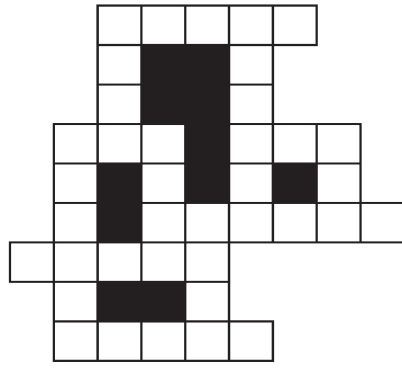
© 2020 King Features Synd., Inc.

FEAR KNOT

By: rj johnson

DOUBT? ... OR DARE!

- ♥ UTG
- BRILEG
- ♥ SEBTA
- ♥ LTIA
- SAGOLT
- ♥ TBA
- ♥ TOBL
- ♥ RHUBS
- ♥ BGI
- BELGIO
- GAONT
- ABUE

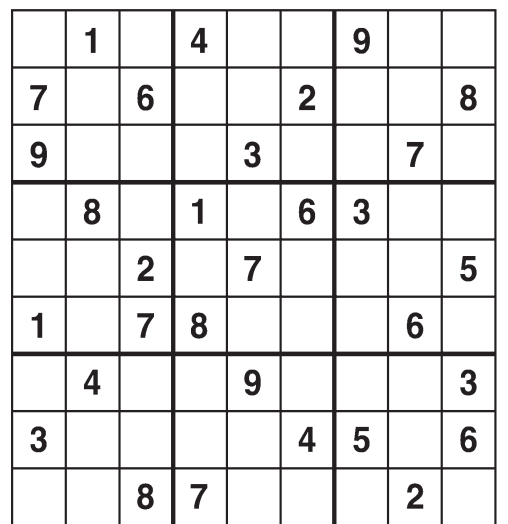


Unscramble these twelve letter strings into an ordinary word (ex. HAGNEC becomes CHANGE). Prepare to use only ONE word from any marked (♥) letter string as each unscrambles into more than one word (ex. ♥RATHE becomes HATER or EARTH or HEART). Fit each string's word either across or down to knot all twelve strings together.

©2020 King Features Syndicate. All rights reserved.

Weekly SUDOKU

by Linda Thistle



Place a number in the empty boxes in such a way that each row across, each column down and each small 9-box square contains all of the numbers from one to nine.

DIFFICULTY THIS WEEK: ♦

- ♦ Moderate
- ♦♦ Challenging
- ♦♦♦ HOO BOY!

© 2020 King Features Synd., Inc.

Puzzles4Kids

by Helene Hovanec

CODED RIDDLE

Change each letter to the one that comes immediately BEFORE it in the alphabet to find a riddle and its answer.

Here's a copy of the alphabet to guide you:

A B C D E F G H I J K L M N O P Q R S T U V W X Y Z

X I Z B S F K B D L - P - M B O U F S O T T N B S U ?

U I F D B O E M F N B L F T U I F N C S J H I U .

©2020 King Features Synd., Inc. World rights reserved.

Just Like Cats & Dogs

by Dave T. Phipps



Even Exchange

by Donna Pettman

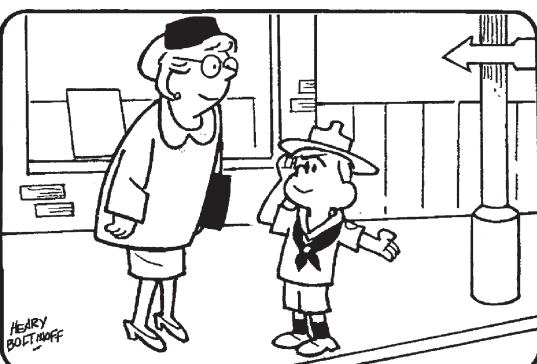
Each numbered row contains two clues and two 6-letter answers. The two answers differ from each other by only one letter, which has already been inserted. For example, if you exchange the A from MASTER for an I, you get MISTER. Do not change the order of the letters.

- | | | | |
|------------------------|-------------|----------------------|---------------|
| 1. Boring tool | U _ _ _ _ | Wrath | _ N _ _ _ |
| 2. Loose coins | _ _ _ N _ _ | Use a credit card | _ _ _ R _ _ |
| 3. Oust from school | _ _ P _ _ _ | Do extremely well | _ _ C _ _ _ |
| 4. Apply oil | G _ _ _ _ | Pleat | C _ _ _ _ |
| 5. Racket | _ _ I _ _ _ | Viking language | _ _ R _ _ _ |
| 6. Dark red gemstone | _ _ N _ _ _ | Loft area | _ _ R _ _ _ |
| 7. Lawnmower's target | _ R _ _ _ | Goblet or beaker | _ L _ _ _ |
| 8. Salad oil container | _ _ E _ _ _ | Pie shell | _ _ S _ _ _ |
| 9. Flat-bottomed boat | _ _ R _ _ _ | Scout's merit | _ _ D _ _ _ |
| 10. Ice cream treat | _ _ _ E _ _ | Last day of the week | _ _ _ _ Y _ _ |

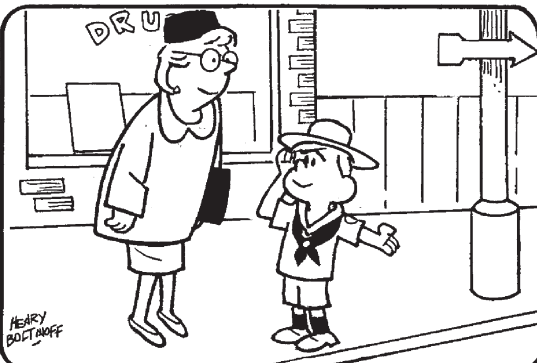
©2020 King Features Synd., Inc.

HOCUS-FOCUS

BY HENRY BOLTINOFF



Find at least six differences in details between panels.



Differences: 1. Window sign is missing. 2. Boy's hat is different. 3. Arrow points in opposite direction. 4. Woman's hair is different. 5. Bricks are added to building. 6. Woman's shoes are flats.

MAGIC MAZE

WHAT'S THAT SMELL?

F T Q G O M J H F C A R Y W R
 U R P N O L J H F D O B Z U X
 V T R Q O D A M K T I H H F S
 D B Z Y K I T W T S O P M O C
 V T R N N A Q E E N L O U N E
 L K U O I P N W W U O R H F G
 D K M C A E E Z S X M I W V A
 S M R E G R U B M I L U N S B
 A R Q G G S O L L I K D A O R
 N M S A U E R K R A U T K J A
 I H S I F D A B H C I L R A G

Find the listed words in the diagram. They run in all directions forward, backward, up, down and diagonally. Unlisted clue hint: A POLECAT

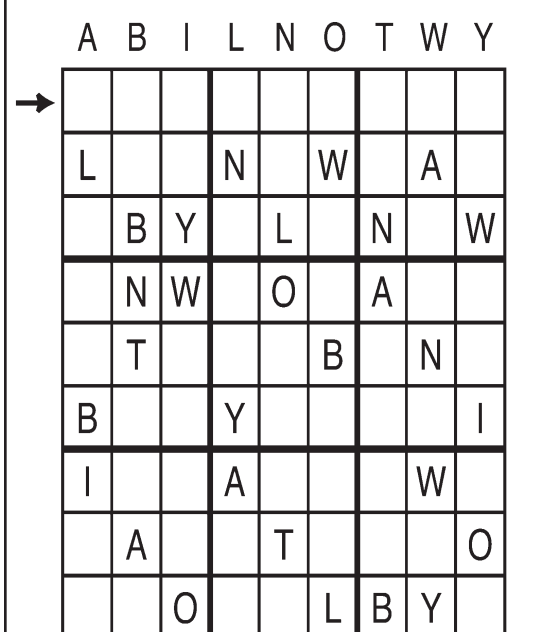
- | | | | |
|----------|-----------|-------------|-----------|
| Ammonia | Garbage | Roadkill | Sour milk |
| Bad fish | Garlic | Rotten eggs | Sulphur |
| Compost | Limburger | Sauerkraut | Wet dog |
| Diapers | Onion | Sewer gas | |

©2020 King Features Syndicate, Inc. All rights reserved.

Letter Box

by Linda Thistle

Place a letter in the empty boxes in such a way that each row across, each column down and each small 9-box square contains all of the letters listed above the diagram. When completed, the row indicated will spell out a word or words.



© 2010 King Features Synd., Inc.

Salome's Stars

ARIES (March 21 to April 19) Deciding to work out that pesky problem (even though you might have been bored, bored, bored with it) should be paying off right about now. Expect to hear some very welcome news very soon.

TAURUS (April 20 to May 20) Unexpected news might cause you to rethink a previous conclusion. Don't be bullheaded and try to bluff it out. Make the needed change, and then take a bow for your objectivity.

GEMINI (May 21 to June 20) Money matters should be considered as you continue to work out your holiday plans. This is a good time to scout out discounts before demand for them outstrips their availability.

CANCER (June 21 to July 22) A calm period early in the week helps you complete most, if not all, of your unfinished tasks. A new project appears by midweek, and this one could carry some big career potential.

LEO (July 23 to August 22) Positive results from recent ventures continue to pump up those self-esteem levels, making you Fabulous Felines feel you can tackle any challenge anyone wants to throw at you.

VIRGO (August 23 to September 22) Family and friends might feel neglected because of your almost total focus on a project. Try to rework your schedule so you can have time for both your loved ones and your work.

LIBRA (September 23 to October 22) Don't be surprised if you suddenly hear from someone from your past who wants to contact you about the possibility of renewing a long-dormant (if not dead) relationship.

SCORPIO (October 23 to November 21) This is a good time to check over what went right and what went wrong with recent efforts. This can provide valuable lessons for projects that will be coming up soon.

SAGITTARIUS (November 22 to December 21) Dealing with people who feel they're always right about everything might be a problem for some. But the savvy Archer should be able to deflate their oversized egos.

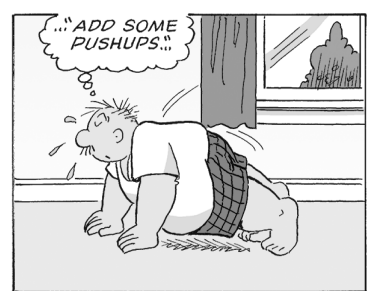
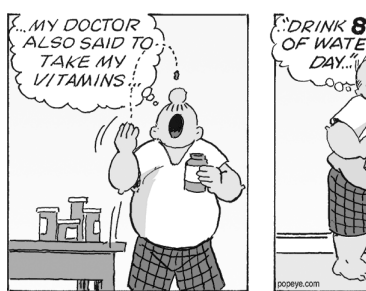
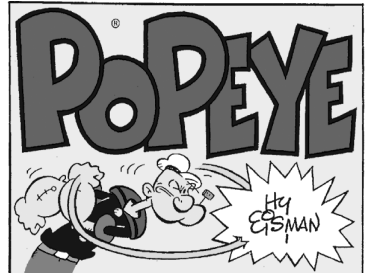
CAPRICORN (December 22 to January 19) This week favors a balance between the demands of your work and your need for fun timeouts. Taking breaks helps restore and keep your energy levels high.

AQUARIUS (January 20 to February 18) There could be an occasional setback in what you're working on. But look at them as lessons on how to do better as you move along. More supporters turn up to cheer you on.

PISCES (February 19 to March 20) Although a more positive aspect influences this week's course, you still need to be sure that those who will work with you have no reason to work against you. Good luck.

BORN THIS WEEK: You believe in keeping your promises. It's not always easy to do, but somehow you do it.

(c) 2020 King Features Synd., Inc.



R.F.D.

by Mike Marland



Amber Waves

by Dave T. Phipps



The Spats

by Jeff Pickering

