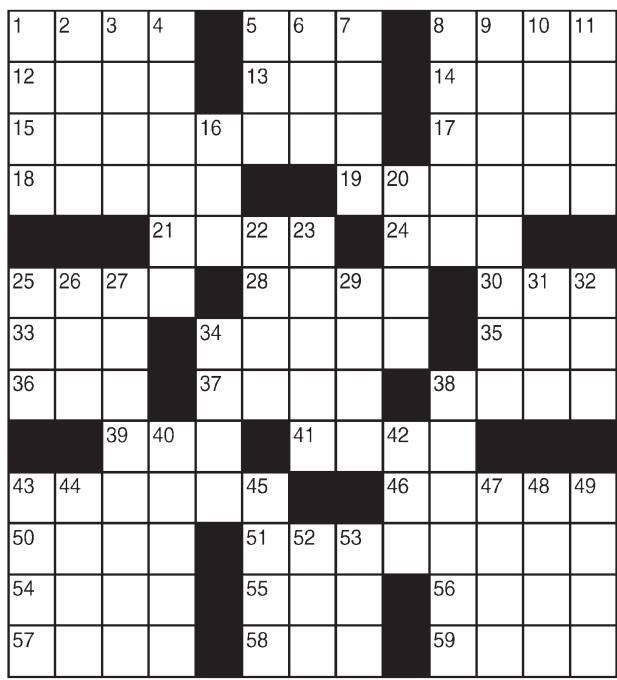


King Crossword

ACROSS

- 1 Uncategor-ized (Abbr.)
- 5 Web address
- 8 Portent
- 12 Maleficence
- 13 Menagerie
- 14 Scruff
- 15 Reading material
- 17 Matures
- 18 World-weariness
- 19 Salty solu-tions
- 21 Fix, in a way
- 24 Raw rock
- 25 Knighted woman
- 28 Nuisance
- 30 Kennedy or Koppel
- 33 Carte lead-in
- 34 Newton or Stern
- 35 Anger
- 36 Gasoline stat
- 37 Dilbert's workplace
- 38 Check bar codes
- 39 Born
- 41 Fourth dimen-sion
- 43 Marketplaces of old
- 46 Got up
- 50 Story
- 51 Belgian surre-alist Rene
- 54 Ear-related
- 55 Individual



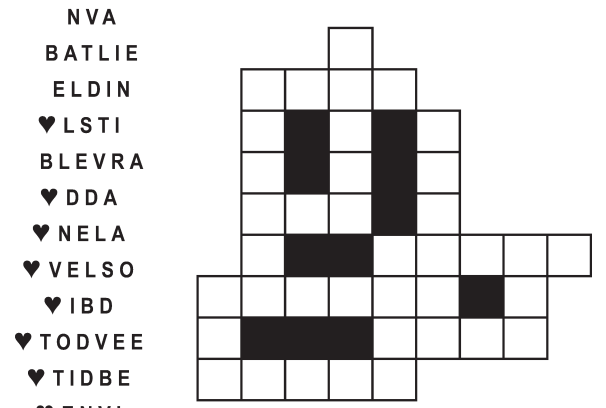
- 56 List-ending abbr.
- 57 — moss
- 58 Workout venue
- 59 Sources for sauces
- DOWN**
- 1 Viral Internet phenom
- 2 Terrible guy?
- 3 Autograph
- 4 Contract sec-tion
- 5 Submachine gun
- 6 Reagan or Howard
- 7 Leopold's
- 8 Broadcasting
- 9 Attractive
- 10 Duel tool
- 11 Loch —
- 16 Speed along
- 20 Campus mil. org.
- 22 Church sec-tion
- 23 Leavening agent
- 25 Water barrier
- 26 Jungfrau, for one
- 27 Mississippi bloom
- 29 Munro pseud-onym
- 31 Historic peri-od
- 32 Hideaway
- 34 Concept
- 38 Episodic TV show
- 40 Put up
- 42 Scratch
- 43 On
- 44 Fence open-ing
- 45 Urban pall
- 47 Maestro
- 48 Go no farther
- 49 Congers, e.g.
- 52 Whatever number
- 53 Jewel

© 2020 King Features Synd., Inc.

FEAR & KNIGHT

By: rj johnson

DOUBT? ... OR DARE!



Unscramble these twelve letter strings to form each into an ordinary word (ex. HAGNEC becomes CHANGE). Prepare to use only ONE word from any marked (♥) letter string as each unscrambles into more than one word (ex. ♥RATHE becomes HATER or EARTH or HEART). Fit each string's word either across or down to knot all twelve strings together.

Puzzles4Kids

by Helene Hovanec

WORD FUN

Study the two words on each line to find the ONE letter in the left column that is NOT in the word in the right column. Write the extra letter on the blank space. Then read DOWN to answer this riddle:

WHAT DOES THE EASTER BUNNY USE TO DRY HIS FUR?

LADIES	___	SLIDE	SANDER	___	NEARS
WHINES	___	SWINE	BORDER	___	ROBED
LAMEST	___	MELTS	PASTRY	___	TRAPS
CLEARs	___	SCALE	ERECTS	___	CREST
BAKERS	___	BARKS	REALMS	___	MEALS

Just Like Cats & Dogs

by Dave T. Phipps



MAGIC MAZE • KEEPSAKES

S H E B Y Y W T R O L J G R E
 B D Y W U H R P A E N K I I G
 D B R Z X P V S U Q O M K N I
 G E C A A O Y Q T W T U E E S
 Q T P N C R I L O Y E C J V H
 F Y N E S T F I G R K C A U Y
 X V R A N U S S R L C Q P O N
 M K I A D E J O A E O H F S E
 C B N Z I N K C P W L A D E M
 Y X G V U D E O H E T I R Q P
 O M S O T O H P T J L K C I H

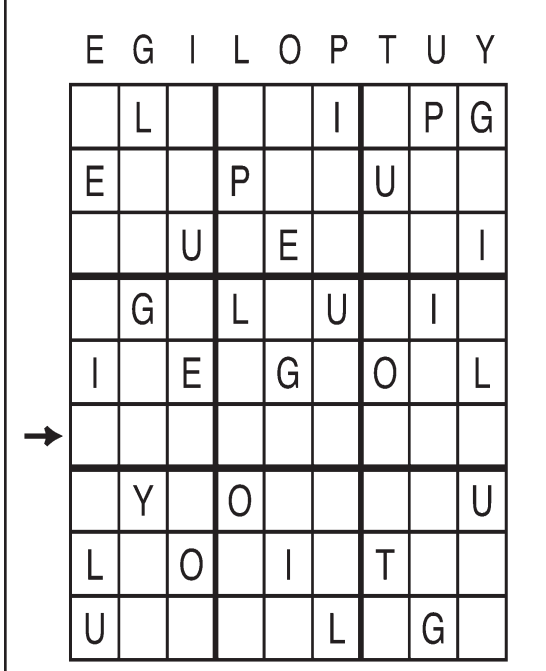
Find the listed words in the diagram. They run in all directions forward, backward, up, down and diagonally. Unlisted clue hint: OLYMPIC GOLD —

Antique	Jewelry	Photos	Souvenir
Autograph	Locket	Postcards	Token
Diary	Necklace	Relic	Trophy
Gifts	Pendant	Rings	

Letter Box

by Linda Thistle

Place a letter in the empty boxes in such a way that each row across, each column down and each small 9-box square contains all of the letters listed above the diagram. When completed, the row indicated will spell out a word or words.



© 2010 King Features Synd., Inc.

Even Exchange

by Donna Pettman

Each numbered row contains two clues and two 6-letter answers. The two answers differ from each other by only one letter, which has already been inserted. For example, if you exchange the A from MASTER for an I, you get MISTER. Do not change the order of the letters.

1. Mason's material	___ _ _ C _ _	Threshold	___ _ _ N _ _
2. Lone Ranger's steed	___ I _ _ _ _	Serving tray	___ A _ _ _ _
3. Peace prize giver	___ _ _ B _ _	Innovative	___ _ _ V _ _ _
4. Graph	___ _ _ _ T _	Bracelet bauble	___ _ _ _ M _
5. Mr. Lloyd Webber	___ _ _ _ W _	Singer Bocelli	___ _ _ _ A _
6. Became a teacher	T _ _ _ _ _	Apprehended	C _ _ _ _ _
7. Hazy	___ I _ _ _ _	Mildewy	___ U _ _ _ _
8. Tailor's filament	___ _ _ _ _ D	Menace	___ _ _ _ _ T
9. Red blossom	___ O _ _ _ _	Young canine	___ U _ _ _ _
10. Hatching	___ _ I _ _ _	Chess move	___ _ _ E _ _

Salome's Stars

ARIES (March 21 to April 19) You might be upset about having to deal with problems that are no fault of your own. But you can turn the annoyance into an asset by showing how quickly and how well you can resolve them.

TAURUS (April 20 to May 20) The Bovine's fondness for tidiness pays off when you untangle a situation that seems hopelessly snarled. You might later be surprised to learn who will be expressing his or her gratitude.

GEMINI (May 21 to June 20) Although you can tackle your assignment the way you prefer, it might be a good idea to at least ask for suggestions. Who knows? One or two might even turn out to be helpful.

CANCER (June 21 to July 22) Make all the changes in your plans or proposals that you feel are necessary before -- repeat, before -- you submit them to your colleagues. You'll come off looking more decisive that way.

LEO (July 23 to August 22) You might feel a mite intimidated in a new environment, be it a job, a classroom or meeting the future in-laws. But enter with a big smile, and everyone will see you as a real take-charge Cat.

VIRGO (August 23 to September 22) This could be a romantic time for you if you can set aside your cynicism and let yourself believe that someone really cares. If you're already in a relationship, expect your partner to be extra-loving.

LIBRA (September 23 to October 22) It's a good time to shed any doubts about your abilities. You've proved yourself in the past, so why not accept that you'll do just as well, or better, in dealing with the new challenge ahead?

SCORPIO (October 23 to November 21) Your suspicions might be on the mark, but unless you can prove what you assume, you need to exercise that Scorpion discretion and let events unfold without your assistance.

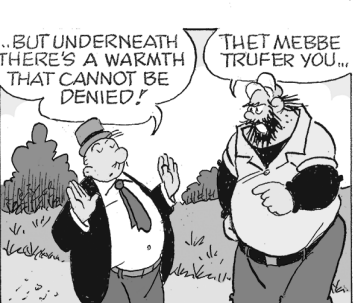
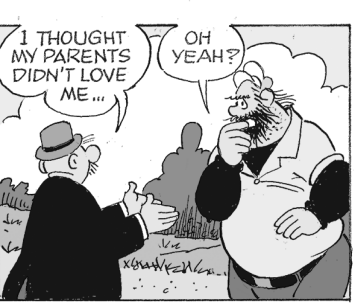
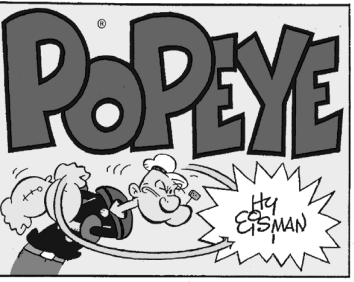
SAGITTARIUS (November 22 to December 21) Be careful not to go over the top this week. Avoid overeating (especially of the wrong foods), or drinking too much, or working too hard. You can do it all, but in moderation.

CAPRICORN (December 22 to January 19) A family matter is given to you to resolve because you have the gift for bringing quarrelsome kinfolk together. But while you're playing Dr. Phil, don't neglect your career obligations.

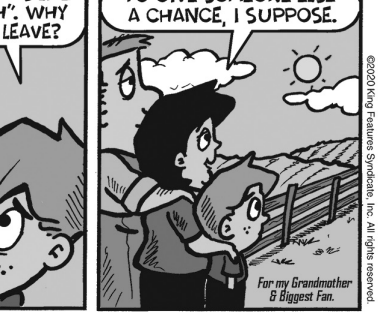
AQUARIUS (January 20 to February 18) Someone of importance shares your goals but disagrees with your plan to achieve them. Never mind. Defending your methods with logic and facts earns you admiration and respect.

PISCES (February 19 to March 20) Consider getting away, perhaps for the weekend, despite all the demands made on your time and energies. You'll return refreshed and ready to tackle it all with your usual finesse.

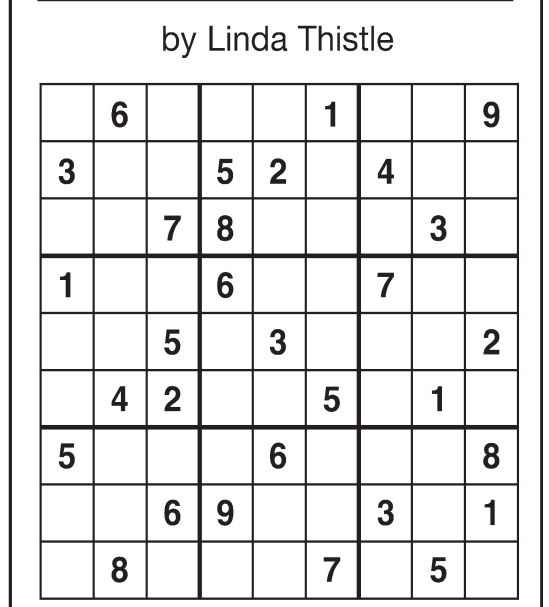
BORN THIS WEEK: You have a sense of honesty that makes people believe and trust in you.



Amber Waves



Weekly SUDOKU



Place a number in the empty boxes in such a way that each row across, each column down and each small 9-box square contains all of the numbers from one to nine.

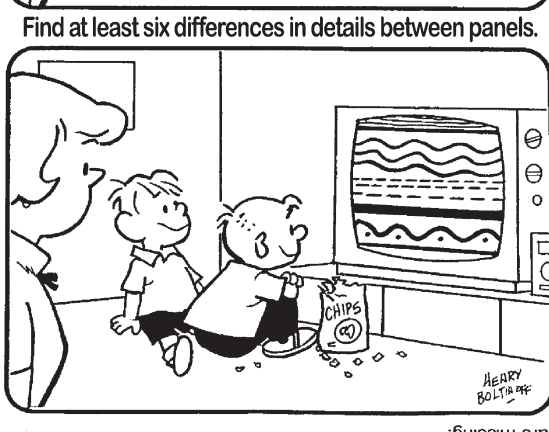
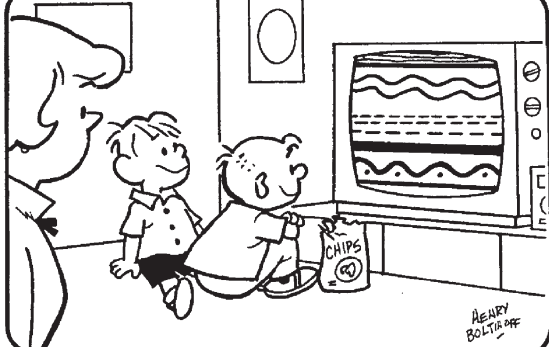
DIFFICULTY THIS WEEK: ♦♦♦

♦ Moderate ♦♦ Challenging ♦♦♦ HOO BOY!

© 2020 King Features Synd., Inc.

HOCUS-FOCUS

BY HENRY BOLTINOFF



Find at least six differences in details between panels.

1. Picture is missing; 2. Wave is added on screen; 3. Pairs are different; 4. Chips on the floor; 5. Blouse is different; 6. Buttons are missing.