

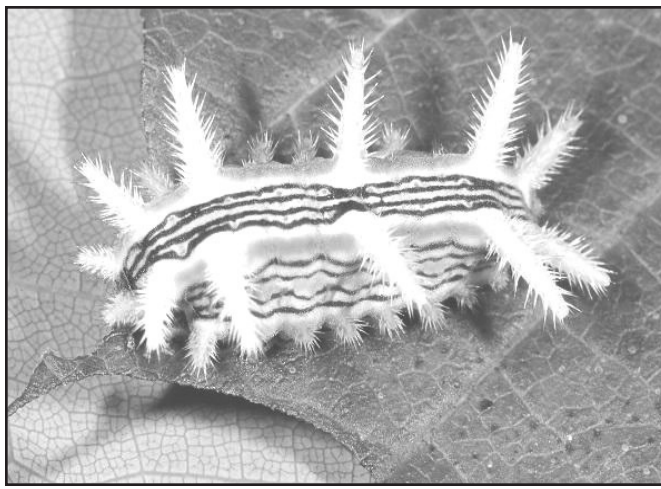
**Eric Baker**  
Estill County Extension  
Agent for Agriculture  
& Natural Resources

# Beware of Stinging Caterpillars

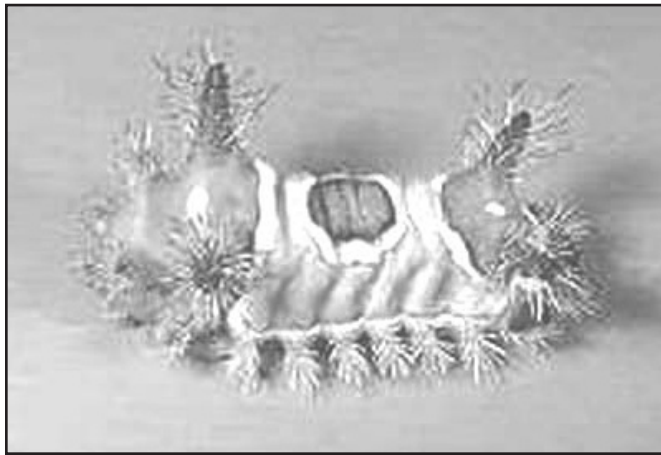
is one of the most familiar stinging caterpillars. It has prominent horns on the front and rear. Its stings can cause severe irritation. Saddlebacks feed on deciduous trees such as basswood, chestnut, cherry, oak, and occasionally they can be found on corn.

Not all stingers provide a visual warning. For example, the hag moth caterpillar resembles a dried leaf. This brown caterpillar has nine pairs of fleshy lobes, all with stinging hairs. It is usually found on lower branches of assorted trees and shrubs, including oak, chestnut, dogwood, sassafras, and ash.

The tiny spines may be lifted from the skin with pieces of masking tape applied to the site. Do not rub the area until they are removed. Wash the wound with soap and warm water. Place an ice pack or cold compress on the wound intermittently (15 minutes on and 15 minutes off). See a physician if there is a severe or



ABOVE AND BELOW: Stinging Caterpillars (UKAg)



persistent reaction to the toxin. More information on stinging caterpillars is on the UK Entomology webpage at <https://entomology.ca.uky.edu/ef003> or call the Estill County Extension office at 723-4557. Educational programs of the Cooperative Extension Service serve all people regardless of economic or social status and will not discriminate on the basis of race, color, ethnic origin, national origin, creed, religion, political belief, sex, sexual orientation, gender identity, gender expressions, pregnancy, marital status, genetic information, age, veteran status, or physical or mental disability.

## The Garden Bug

**Rain gardens** are shallow depressions in the landscape that give rainfall a chance to collect and filter through the surrounding ground, instead of being funneled directly away from the property into local waterways via storm drains. Pollutants can be filtered out of rainwater during this process. For instructions on how to build your own rain garden, go online to [www.raingardennetwork.com](http://www.raingardennetwork.com)

- Brenda Weaver

Sources:  
uconn.edu,  
[www.raingardennetwork.com](http://www.raingardennetwork.com)

© 2020 by King Features Syndicate, Inc. World rights reserved.

## Birding BITS

BY Cindy Brook

### Feeding Fledglings

Keep it simple when feeding baby birds. White proso millet, whole-grain bread, unsalted peanuts, safflower seed and sunflower heart chips are just a few food items young fliers love. If you toss seed on the ground, make sure it's near a brush pile or bushes so birds can easily take cover.

E-mail: [birdingbits@cflrr.com](mailto:birdingbits@cflrr.com)  
© 2014 King Features Syndicate, Inc.

## Registration Open for 2020 Woodland Owners Short Course

The 2020 Kentucky Woodland Owners Short Course will provide new and experienced woodland owners with a bounty of important information about managing their woodlands for extra income, recreation, wildlife, and with the environment in mind.

"Not everyone knows where to turn to for advice on how to meet their objectives for their property, but the Woodland Owners Short Course helps woodland owners find the many resources available to them in the state," said Billy Thomas, UK extension forester in the College of Agriculture, Food and Environment. "Even if you don't own woodlands in Kentucky, but you have an interest in learning more about the subject, you are invited to join us."

This year, because of the COVID-19 pandemic, the short course is free and will consist of live, online evening webinars and potential optional in-person tours to view woodland management practices in Kentucky's state forests. In case these tours are not allowed, video versions of the tours will be available to registered attendees. The live, Zoom webinars will take place Aug. 18-27, with a "Woodland Owners Partners" webinar on Sept. 17. The field tours, if allowed, will take place Sept. 19 and 26 in five forests around the state.

The sessions will feature forestry and wildlife experts with tracks for both beginning and experienced woodland owners. Registered attendees can watch any or all of the live webinars or view the recorded sessions at their own convenience.

Attendees can participate in two programming tracks, green for woodland owners just getting started and gold for those already actively managing their woodlands or who have attended a previous short course. Because of the online nature of the tracks, attendees will be able to participate in both tracks in the same year. Sessions will cover such topics as tree identification, forest health, woodland management practices, wildlife habitat management and small-scale logging equipment.

If the pandemic situation allows it, the Kentucky Division of Forestry will offer guided, limited-capacity field tours to provide a field component and showcase woodland management practices. Masks and social distancing will be required.

For a detailed listing of sessions and times and to register, visit the short course website at <http://forestry.ca.uky.edu/wosc>. Registration is required. Registrants will be able to attend any webinar or watch

recordings of them and will receive instructions for attending the state forest tours if they occur. Contact Thomas' email address at [billy.thomas@uky.edu](mailto:billy.thomas@uky.edu) for more information.

## Rinse & Return Program offered to farmers Sept. 8<sup>th</sup>

The Rinse and Return Plastic Pesticide Container Recycling Program will be offered once again in Estill County this fall. This Kentucky Department of Agriculture program collects triple-rinsed, plastic pesticide containers for recycling. All farmers are encouraged to participate. Please remember, pesticide containers must be triple-rinsed, label packets removed, and no lids should be present. All containers received will be inspected.

The 2020 Rinse and Return collection date is Tuesday, September 8th, 10:00 a.m. to noon at the Estill County Extension Office, 76 Golden Court (off Stacy Lane) in Irvine. For more information, call 723-4557.

## Puzzle Answers

### BIBLE WORD SEARCH



### Bible Word Search on Page 7

## Stickeler's Answer

### Stickelers Answer

Each word is made up of letters that occur twice.

### Stickeler's Puzzle on Page 4

## Wishing Well®

7	8	7	2	8	4	6	2	8	2	6	5	3
L	A	O	C	D	B	A	H	O	A	D	Y	B
4	3	5	4	3	7	5	4	5	2	4	3	6
E	E	O	C	O	V	U	O	S	N	U	P	E
2	5	3	4	5	6	3	6	5	7	4	2	3
G	T	E	R	A	L	N	I	R	E	A	E	T
6	2	3	4	7	4	5	3	2	5	8	2	5
G	O	O	G	I	E	T	L	F	D	O	V	I
3	2	5	3	5	6	3	4	6	5	2	7	2
I	I	A	F	R	H	E	O	T	Y	E	S	W
6	2	4	2	7	4	7	6	7	6	2	6	7
F	P	U	O	F	S	O	U	R	L	I	D	E
6	8	2	8	6	2	7	8	7	8	7	8	8
A	R	N	O	Y	T	V	P	E	E	R	N	S

HERE IS A PLEASANT LITTLE GAME that will give you a message every day. It's a numerical puzzle designed to spell out your fortune. Count the letters in your first name. If the number of letters is 6 or more, subtract 4. If the number is less than 6, add 3. The result is your key number. Start at the upper left-hand corner and check one of your key numbers, left to right. Then read the message the letters under the checked figures give you.

©2020 King Features Syndicate, Inc.

## CryptoQuip

This is a simple substitution cipher in which each letter used stands for another. If you think that X equals O, it will equal O throughout the puzzle. Solution is accomplished by trial and error.

Clue: C equals E

Y ICCF PRIWF IQV KYVKWH

CFCGMPZOH. RC PFF NZQR OMC

GQQV KVCPOWVCH RQVN IQV

GCPZWOH.

©2020 King Features Synd., Inc.

## CryptoQuote

AXYDLBAAXR  
is LONGFELLOW

One letter stands for another. In this sample, A is used for the three L's, X for the two O's, etc. Single letters, apostrophes, the length and formation of the words are all hints. Each week the code letters are different.

MS MP MA OLFW YLYHASP

LN BHXMPMLA SQCS OLFW

BHPSMAO MP PQCVBH.

— SLAO WLIIMAP

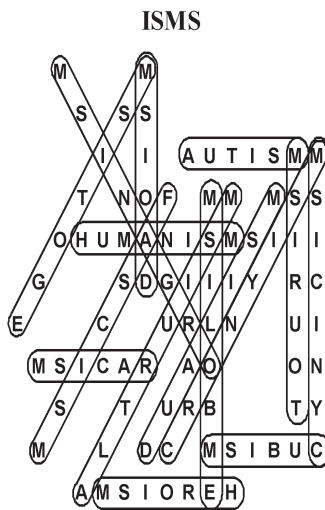
©2020 King Features Synd., Inc.

## Puzzle Answers August 12, 2020

### Puzzles4Kids Answer

Why are ducks great detectives?

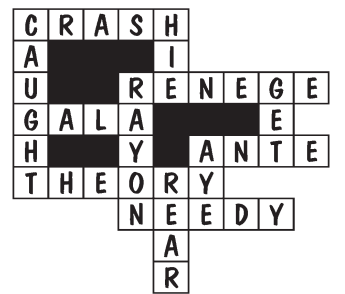
Because they quack the case.



### Letter Box Solution

E	O	U	S	N	C	H	R	W
S	C	H	U	W	R	N	O	E
R	W	N	H	O	E	S	C	U
U	N	C	R	E	H	W	S	O
H	S	O	W	U	N	C	E	R
W	R	E	O	C	S	U	H	N
N	E	W	C	H	O	R	U	S
O	H	R	N	S	U	E	W	C
C	U	S	E	R	W	O	N	H

### FEAR & KNIGHT answer

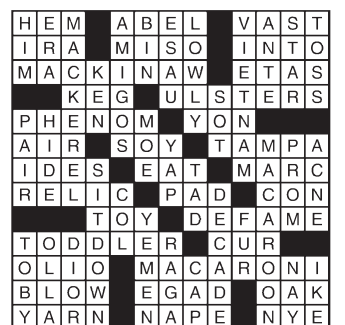


### Even Exchange answers

- Hearth, Health
- Swede, Suede
- Damper, Dapper
- Parch, Patch
- Floor, Flour
- Wafer, Water
- Brainy, Brawny
- Whole, Whale
- Holly, Hilly
- Resort, Retort

### King Crossword Answers

Solution time: 25 mins.



### Weekly SUDOKU Answer

7	5	9	1	6	8	3	4	2
4	2	3	7	9	5	8	1	6
6	8	1	2	4	3	9	5	7
2	3	7	5	8	6	4	9	1
1	9	8	4	3	7	6	2	5
5	4	6	9	1	2	7	3	8
8	1	5	3	7	4	2	6	9
3	6	2	8	5	9	1	7	4
9	7	4	6	2	1	5	8	3

### Bible Trivia Answers

"Test Your Bible Knowledge," with 1,206 multiple-choice questions by columnist Wilson Casey, is available in bookstores and online.

- ANSWERS (1) Neither; (2) Z; (3) Nain; (4) Jubal; (5) John; (6) Haran