

# Protect your home from termites

ground colonies and your home. Another sign of an infestation is damaged wood hollowed out along the grain with dried bits of mud or soil lining the feeding galleries.

Termite feeding, and resulting damage, can remain undetected in exposed wood because the outer surface usually is left intact. Many infestations result from direct contact between structural wood and the soil, which gives termites access to food, moisture, shelter and provides a hidden entry into your home. Make sure to have at least six inches between the ground level and wood siding, porch steps, latticework, door or window frames, posts and similar wooden elements. Contrary to popular belief, pressure-treated wood isn't immune to infestation, because termites will enter through cut ends or cracks and build tunnels over the surface to susceptible wood above.

Since termites are attracted to moisture, they are more likely to enter a structure when soil next to the foundation consistently is moist. So, divert water away from the foundation with properly functioning gutters, downspouts and splash blocks. Repair leaking faucets, water pipes and air conditioning units. Adjust the soil grade next to the foundation so that surface-water drains away from the building and adjust lawn sprinklers and irrigation systems to minimize water pooling near the foundation.

Reduce humidity in crawl spaces by providing adequate ventilation. Don't allow shrubbery and other vegetation to grow over vents; it will inhibit cross-ventilation. You can reduce crawl space moisture by installing four- to six-milliliter polyethylene sheeting over

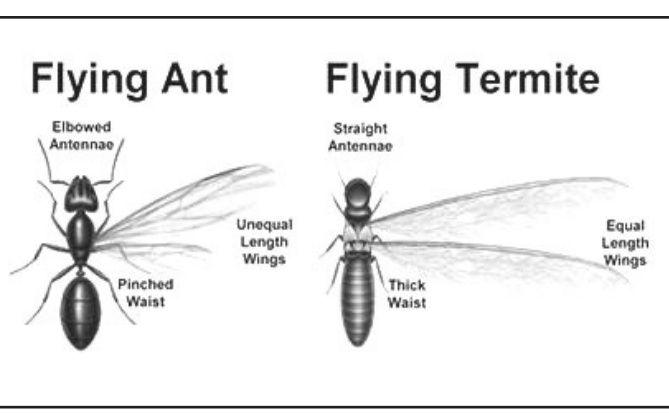


Photo: From UK Extension Publication ENTFACT-604

about 75 percent of the soil surface.

Firewood, lumber and other wood debris stored against the foundation or in crawl spaces, attract termites and provide a food source. This practice also gives termites a hidden entry into the home and allows them to bypass any existing termiticide soil barrier.

Cellulose-containing materials including mulch and wood chips attract termites. Use these materials sparingly, especially when you have other conditions conducive to termite problems. Never allow mulch to touch wood siding, door frames or window frames. Consider using crushed stone or pea gravel instead. These materials are less attractive to termites and can reduce other pests such as millipedes, pillbugs, earwings and crickets.

The best way to prevent termite infestations is to have your home treated by a professional pest control firm. There are two general categories of termite treatment, liquids and baits. Liquid treatments are intended to provide an effective, long-lasting chemical barrier around and beneath your home that termites cannot breach. Termite baits are installed in plastic stations below the ground in the yard and occasionally indoors. Foraging termites consume the bait and share it with their nest-mates, resulting in a gradual decline in termite numbers.

What should you look for when choosing a pest con-

trol firm? The firm should be licensed by the Kentucky Department of Agriculture. Membership in the Kentucky Pest Control Association and/or National Pest Control Association suggests the company is an established firm with access to the training and technical information necessary to correctly do the job. Consider calling at least two to three companies and asking for references. Avoid pest control firms that use "specials" or scare tactics to pressure you into immediately signing a contract.

Termiticides are extensively tested for adverse effects. Based on current research, registered termiticides present no significant hazard to humans, pets, or the environment when applied according to label directions.

Educational programs of the Cooperative Extension Service serve all people regardless of economic or social status and will not discriminate on the basis of race, color, ethnic origin, national origin, creed, religion, political belief, sex, sexual orientation, gender identity, gender expressions, pregnancy, marital status, genetic information, age, veteran status, or physical or mental disability.



**Birding BITS** BY Cindy Brook  
For Little Birds Only  
Create a finch feeding area. All you need are a few thistle tube feeders, preferably with a tray attached to the bottom. Finches love thistle seed, but large nuisance birds like grackles don't. Neither do squirrels, so no baffle required.  
E-mail: birdingbits@cflrr.com  
© 2010 King Features Syndicate, Inc.

## Wishing Well®

7	6	4	6	8	7	8	3	6	5	3	2	3
C	A	B	S	B	O	E	B	U	K	U	A	S
4	2	8	5	6	4	7	5	6	2	7	4	5
E	G	S	N	N	A	N	O	N	O	Q	D	W
6	8	3	5	6	4	2	7	3	6	3	4	5
Y	E	I	L	D	V	O	U	N	I	E	E	E
4	6	4	6	5	2	8	5	2	6	4	3	6
N	S	T	P	D	D	L	G	S	O	U	S	S
8	4	6	5	3	5	8	6	5	4	3	5	6
F	R	I	E	S	G	R	T	I	O	T	V	I
4	3	4	7	3	6	8	3	6	7	8	5	8
U	R	S	E	I	O	E	P	N	S	L	E	I
2	5	7	2	8	7	2	7	2	8	7	8	7
T	N	T	A	A	M	R	A	T	N	D	T	E

HERE IS A PLEASANT LITTLE GAME that will give you a message every day. It's a numerical puzzle designed to spell out your fortune. Count the letters in your first name. If the number of letters is 6 or more, subtract 4. If the number is less than 6, add 3. The result is your key number. Start at the upper left-hand corner and check one of your key numbers, left to right. Then read the message the letters under the checked figures give you.

©2021 King Features Syndicate, Inc.

## CryptoQuip

This is a simple substitution cipher in which each letter used stands for another. If you think that X equals O, it will equal O throughout the puzzle. Solution is accomplished by trial and error.

Clue: J equals F

LJ YZPBQZFC GZGEHHC WTX Y ZTG  
ZJ QWBEGI PLXGY, SZTHF CZT YEC  
IB'Y TX-SBWG-LJLBF?

©2021 King Features Synd., Inc.

## CryptoQuote

AXYDLBAAXR  
is LONGFELLOW

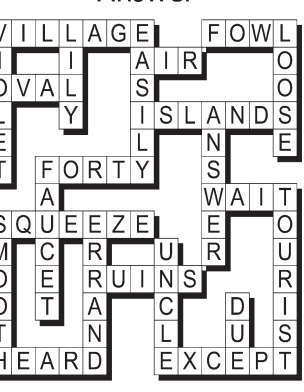
One letter stands for another. In this sample, A is used for the three L's, X for the two O's, etc. Single letters, apostrophes, the length and formation of the words are all hints. Each week the code letters are different.

U KW K RNWKOUXZ JVAKNXV  
U ZRUOQ RNWKOUZI AKO, FUZR  
ACOXZKOZ WCBKD LNUHKOAV,  
ABVKZV K BVKXCOKJDI HVAVOZ  
XCAUVZI. — GKWVX WUARVOVB

©2021 King Features Synd., Inc.

## Puzzle Answers May 12, 2021

### Puzzles4Kids Answer



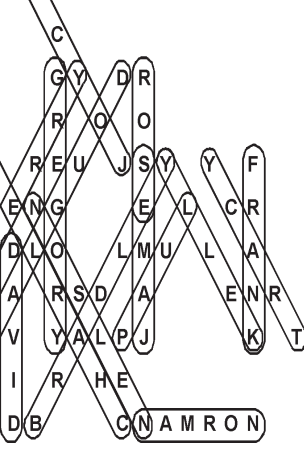
### FEAR KNIT answer



### Even Exchange answers

- Shore, Shove
- Limbs, Limbo
- Rumble, Ramble
- Since, Singe
- Pierce, Pierre
- Severe, Reverse
- Diver, Dover
- Horse, Horde
- Ferry, Furry
- Pewter, Pester

### FIRST OR LAST NAME?



### Letter Box Solution

P	N	R	B	A	K	T	S	U
K	U	A	R	T	S	B	N	P
S	T	B	N	U	P	K	A	R
R	K	T	P	S	N	A	U	B
B	A	N	K	R	U	P	T	S
U	P	S	T	B	A	N	R	K
N	R	U	A	K	B	S	P	T
T	B	P	S	N	R	U	K	A
A	S	K	U	P	T	R	B	N

### King Crossword Answers

Solution time: 23 mins.

B	E	E	T	F	E	D	C	H	U	B
A	L	T	O	I	T	S	A	E	R	O
B	A	R	T	L	E	T	T	R	A	G
E	N	E	O	R	E	U	T	T	E	R
		P	R	Y		B	M	W		
S	N	E	A	D	O	R	P	H	E	U
T	I	E	A	R	N	A	E	C	T	N
S	A	N	T	A	F	E	C	E	C	I
		I	C	K		G	A	L		
B	O	A	S	T	F	U	N	K	E	A
U	C	L	A	M	A	R	T	I	N	I
S	H	U	N		E	M	U		L	E
T	O	M	S		D	E	S		K	E

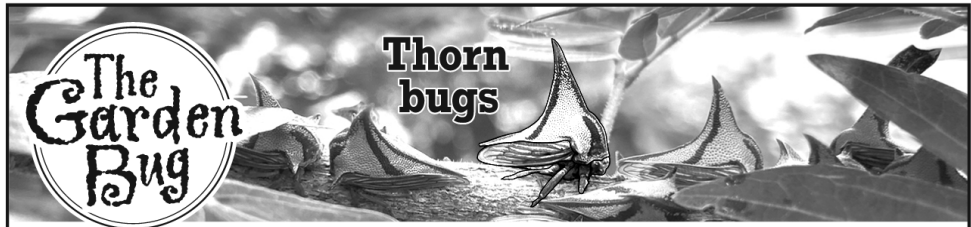
### Weekly SUDOKU Answer

6	7	1	2	5	3	4	8	9
3	9	8	4	6	7	1	5	2
5	2	4	9	1	8	7	3	6
1	8	5	6	3	9	2	7	4
9	4	3	7	2	5	6	1	8
7	6	2	1	8	4	3	9	5
4	3	7	5	9	2	8	6	1
8	5	6	3	4	1	9	2	7
2	1	9	8	7	6	5	4	3

### Bible Trivia Answers

"Test Your Bible Knowledge," with 1,206 multiple-choice questions by columnist Wilson Casey, is available in bookstores and online.

ANSWERS (1) Neither; (2) Lydia; (3) Heart (Matthew 6:21; Luke 12:34); (4) Absalom; (5) Jericho; (6) Tamar



## Thorn bugs

This insect can usually be found throughout South and Central America, Mexico, and southern Florida, but is sometimes found in more northern locations where its host plants have done well. It causes damage by piercing the plant tissue and sucking the sap. The females lay a single clutch of eggs in the tender bark of twigs, and the eggs hatch about 20 days later. The female actively tends her brood, and can pass a chemical to her nymphs to make them distasteful to potential predators. — Brenda Weaver

Source: entnemdept.ufl.edu



**Birding BITS** BY Cindy Brook  
Calling All Finches  
Create a finch feeding station. All you need are thistle tube feeders with trays attached. While finches will arrive, don't be surprised if you see buntings, sparrows and juncos too. But you won't see nuisance birds like grackles, because they don't like thistle seed. And neither do squirrels!  
E-mail: birdingbits@cflrr.com  
© 2014 King Features Syndicate, Inc.

## UK Horticulture Webinar

Eric Baker, Estill County Extension

The free Horticulture Webinar Wednesdays continue on Zoom each Wednesday at 12:30 p.m. Topics for May include: Begonias - May 19, and Summer and Fall Lawn Care - May 26.

Those interested in joining the webinars should register for one or more of the sessions at <https://tinyurl.com/UKYHortWebWed21>. Last year's webinars are available for viewing at <https://kentuckyhortnews.com/horticulture-webinar-wednesdays/season-one/>.

## Lost Heifer

700 or 800 lb. white heifer lost in Fox area. Please call (606) 726-9496

## Stickeler's Answer

### Stickelers Answer

1-e, 2-a, 3-d, 4-b, 5-c

### Stickeler's Puzzle on Page 7

## Puzzle Answers

### BIBLE WORD SEARCH



he's un-Cert-ified?  
If somebody totally runs out of breath mins., could you say answer  
CryptoQuip

I am a humanist because I think humanity can, with constant moral guidance, create a reasonably decent society. — James Michener answer  
CryptoQuote

### Bible Word Search on Page 7