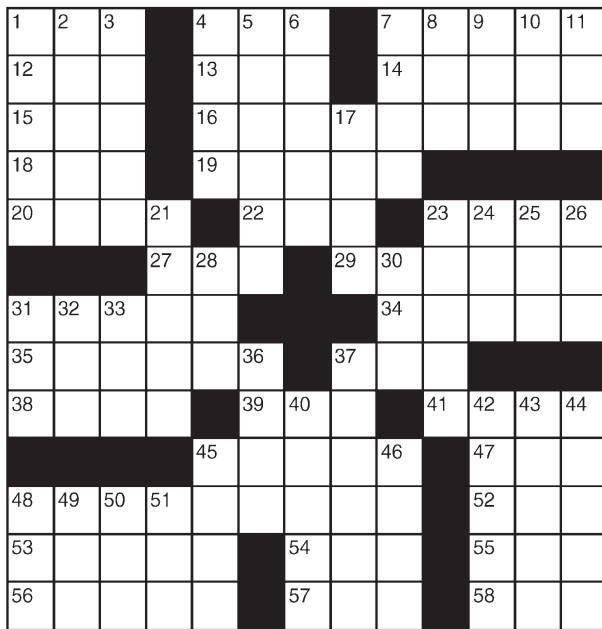


King Crossword

ACROSS

- 1 Chances, for short
- 4 Taxi
- 7 Walk through mud, maybe
- 12 Shell game need
- 13 Gorilla
- 14 Anorak
- 15 Attempt
- 16 Greenish-blue deposit on copper
- 18 "Impossible"
- 19 Put forth
- 20 Eats
- 22 Schedule abbr.
- 23 Oil job
- 27 Mornings (Abbr.)
- 29 Inspiring horror
- 31 Supermarket section
- 34 Playing marble
- 35 Fodders for mills
- 37 Speedometer stat
- 38 Apiece
- 39 Old card game
- 41 Deuce topper
- 45 Gls' alarm clock
- 47 Ostrich's kin



- 8 Trail the pack
- 9 Hockey legend
- 10 Tackle moguls
- 11 Owns
- 17 Schlep
- 21 "America's Most Wanted" host
- 23 Frivolous
- 24 "Born in the —"
- 25 Luncheonette order, for short
- 26 Pupil's place
- 28 Citi Field athlete
- 30 Knock
- 31 Census
- 32 Playwright Levin
- 33 [Uncorrected-]
- 36 Punch
- 37 Illinois city
- 40 Fairy tale baddies
- 42 Summarize
- 43 Cyber-message
- 44 Delicious
- 45 Concoct
- 46 Being (Lat.)
- 48 Way back when
- 49 Limit, for short
- 50 Mac
- 51 Id counter-part

DOWN

- 1 Re 26-Down
- 2 — Amboy, N.J.
- 3 Permission
- 4 Grotto
- 5 Pinnacles
- 6 Jaunty chapeau
- 7 Skewer

© 2015 King Features Synd., Inc.

FEAR KNOT

By: rj johnson

DOUBT? ... OR DARE!

MSU

- ♥ PAMTRI
- EDAHA
- ♥ TRAS
- ♥ SOWVEL
- ♥ IMD
- ♥ APWS
- ♥ RESEV
- TWI
- ♥ TASEED
- HMRIT
- ♥ AHDS

Unscramble these twelve letter strings to form each into an ordinary word (ex. HAGNEC becomes CHANGE). Prepare to use only ONE word from any marked (♥) letter string as each unscrambles into more than one word (ex. ♥RATHE becomes HATER or EARTH or HEART). Fit each string's word either across or down to knot all twelve strings together.

NEW! 30 Fear Knot puzzles \$3.50 • Six Volumes • Order at rbmall.com

Puzzles4Kids

by Helene Hovanec

CODED RIDDLE

Change each letter to the one that comes immediately BEFORE it in the alphabet to find a riddle and its answer.

Here's a copy of the alphabet to guide you:

A B C D E F G H I J K L M N O P Q R S T U V W X Y Z

X I Z E J E U I F H B S E F O F S R V J U I J T

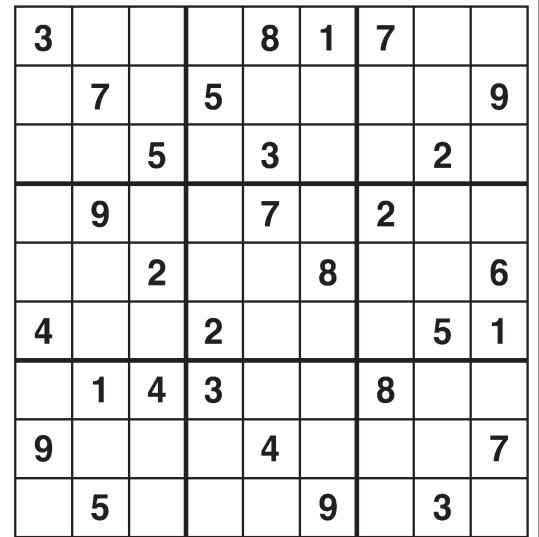
K P C ? C F D B V T F I J T D F M F S Z X B T O P U

I J H I F O P V H I .

For more puzzle fun, go to www.brainzies.com

Weekly SUDOKU

by Linda Thistle



Place a number in the empty boxes in such a way that each row across, each column down and each small 9-box square contains all of the numbers from one to nine.

DIFFICULTY THIS WEEK: ★

★ Moderate ★★ Challenging
★★★ HOO BOY!

© 2015 King Features Synd., Inc.

HOCUS-FOCUS

BY HENRY BOLTINOFF



Find at least six differences in details between panels.



Differences: 1. Caramel is missing. 2. Hat is shorter. 3. Belt is smaller. 4. Suspenders are missing. 5. Sign is missing. 6. Cash register is smaller. 7. Cupcake is missing. 8. Sign is missing. 9. Hat is shorter. 10. Belt is smaller.

Find Puzzles Galore! • Order at: rbmall.com or Call: (800) 708-7311 x250

Just Like Cats & Dogs

by Dave T. Phipps



LAKE — MAGIC MAZE

LARGE LAKES

T A X U R O L O I R A T N O J
G D A X V S P E N K K I F C A
X V S Q (M A R A C A I B O) L
S U P E R I O R I O Y J H H G
E C A X E V C R T R N S P E N
L L J H F D O H B A A E P N Y
X A V T E T U R I H G I G Y P
O M K K C R C I K G N O G A E
D B Z I O H Y L X N A W D S U
T R V N A Q A E I O T N N A L
J I G D F B D W C A Y X W V L

Find the listed words in the diagram. They run in all directions forward, backward, up, down and diagonally

- Balkhash
- Chad
- Erie
- Eyre
- Huron
- Ladoga
- Maracaibo
- Michigan
- Nyasa
- Onega
- Superior
- Tanganyika
- Victoria
- Winnipeg

© 2015 King Features Syndicate, Inc. All rights reserved.

Even Exchange

by Donna Pettman

Each numbered row contains two clues and two 6-letter answers. The two answers differ from each other by only one letter, which has already been inserted. For example, if you exchange the A from MASTER for an I, you get MISTER. Do not change the order of the letters.

- 1. Miami baseball player — A — — — — Arthurian wizard — E — — — —
- 2. Factory — — — — T — — — — Ship's slat — — — — K — — — —
- 3. Pale — — — — H — — — — Ski resort — — — — P — — — —
- 4. Welcome — — — — T — — — — Naive — — — — N — — — —
- 5. Taper C — — — — — Code-name — — — — H — — — —
- 6. Halloween disguises — — — — K — — — — Flagstaffs — — — — T — — — —
- 7. Ballerina, e.g. — — — — C — — — — Temper — — — — D — — — —
- 8. Jolly — — — — E — — — — Tie the knot — — — — A — — — —
- 9. Badenov or Karloff — — — — B — — — — Actress Day — — — — D — — — —
- 10. Annoy — — — — E — — — — Wanted sign — — — — O — — — —

Salome's Stars

ARIES (March 21 to April 19) Your moodier side might emerge this week. But the dark period should pass in time for the party-loving Lamb to go on a happy gambol with some very special people this weekend.

TAURUS (April 20 to May 20) Yet again, you show your skill at being able to indulge in your love of the arts this week while still taking care of practical matters, including some still-unfinished business matters.

GEMINI (May 21 to June 20) A potential change might appear to be what you've been looking for. In any event, consider both the negative as well as the positive possibilities before making any sort of decision.

CANCER (June 21 to July 22) Relationships continue to dominate your aspect this week on a mostly positive level, with just a few problem areas you can smooth over. Also, try to be flexible about travel plans.

LEO (July 23 to August 22) You love being on center stage, and while you absolutely purr at the sound of all that praise, be careful not to take on too many commitments at the expense of time spent with loved ones.

VIRGO (August 23 to September 22) You might feel that you need to get involved in a matter concerning a friend or relative. But while the issues appear to be cut and dried, they might not be. Get more facts before you act.

LIBRA (September 23 to October 22) A suggestion about a policy change could create heated reactions. Keep your mind open and resist joining in with naysayers unless they can show a real basis for their position.

SCORPIO (October 23 to November 21) While potential career changes warrant your interest, don't ignore current job responsibilities. A personal relationship also can benefit from more of your attention.

SAGITTARIUS (November 22 to December 21) Don't guess at what the facts might be if you hope to make the best decision possible. The wise course is to ask direct questions and act on the answers you get.

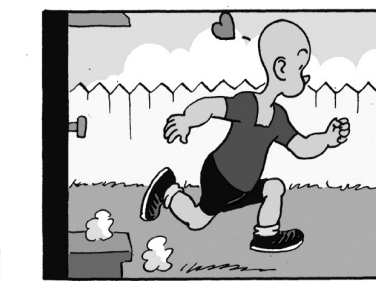
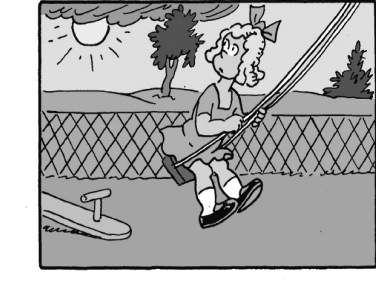
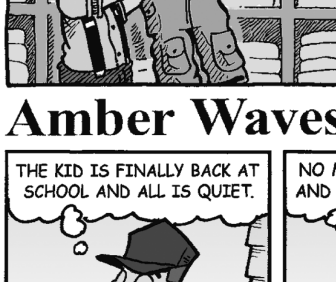
CAPRICORN (December 22 to January 19) Your efforts involving that pesky problem should soon show positive signs of being resolved. This would allow you to shift some of your focus in another direction.

AQUARIUS (January 20 to February 18) While you enjoy well-deserved praise for getting a difficult job done, there's no time to relax. A new challenge looms. Expect more support from a once-strong critic.

PISCES (February 19 to March 20) You might still have explaining to do about your decision, but support grows as you continue to make your case. You also might want to start making plans for the upcoming holidays.

BORN THIS WEEK: You insist on making decisions based on facts, not on popular opinions. Have you considered a career in science? a trusted friend everyone can rely on.

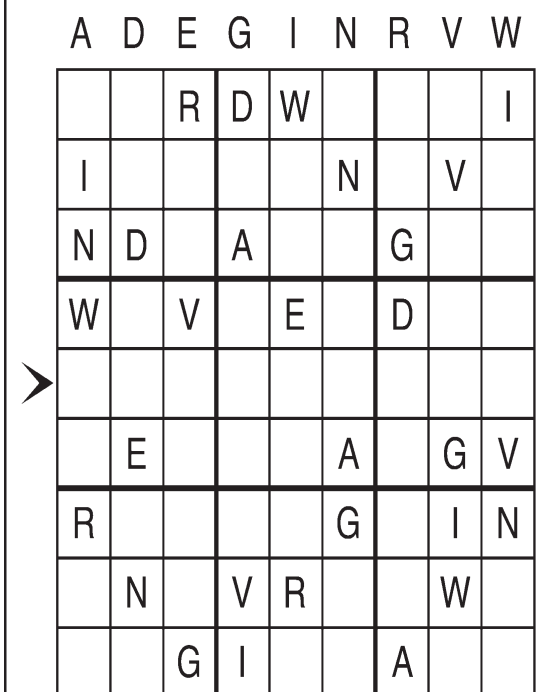
© 2015 King Features Syndicate Inc.



Letter Box

by Linda Thistle

Place a letter in the empty boxes in such a way that each row across, each column down and each small 9-box square contains all of the letters listed above the diagram. When completed, the row indicated will spell out a word or words.



© 2015 King Features Syndicate, Inc. All rights reserved.

Amber Waves



The Spats



by Jeff Pickering

