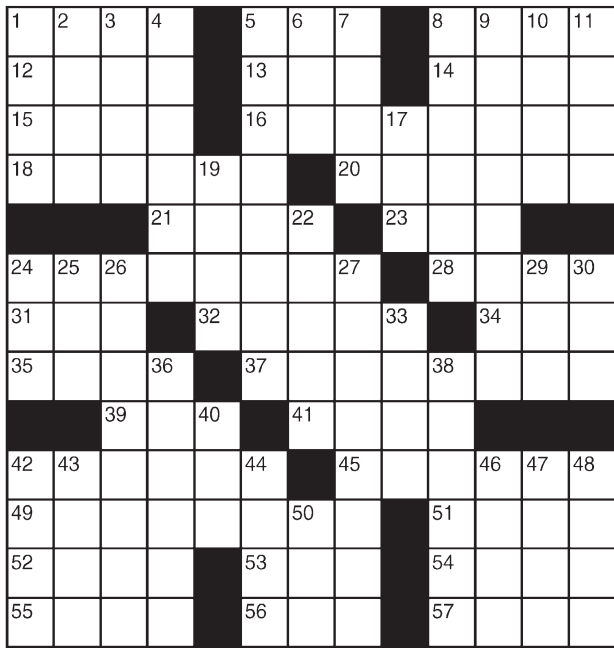


King Crossword

ACROSS

- 1 Lose color
- 5 Actress Lupino
- 8 Half a ticket
- 12 Not "fer"
- 13 Neither mate
- 14 Bean curd
- 15 Tin Man's problem
- 16 Carriage
- 18 Cookbook entry
- 20 Underscore
- 21 Lacks the ability
- 23 Brit. reference book
- 24 One seeking political asylum
- 28 Unaccompanied
- 31 — Khan
- 32 Doctrine
- 34 Tiny
- 35 Trumpet, e.g.
- 37 Shame
- 39 Third letter
- 41 Close up tight
- 42 Narcotic
- 45 Jackson or Johnson
- 49 Oppressive ruler
- 51 Skeleton component
- 52 October



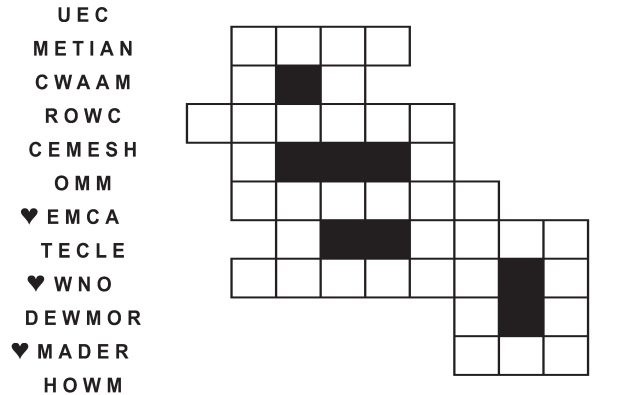
- 9 Make less intense
- 10 Venusian vessels?
- 11 Prickly seed cases
- 17 Ike's command in WWII
- 19 Treaty
- 22 Morrison and Braxton
- 24 Doo follower
- 25 Id counterpart
- 26 Absurd
- 27 Use Wikipedia, maybe
- 29 Zodiac feline
- 30 "— the
- 33 Compared to
- 36 Without making a mess
- 38 Address to a bloke
- 40 Greek vowel
- 42 Smell
- 43 Meerschaum, e.g.
- 44 Sicilian sputter
- 46 Post-bout attire
- 47 Carbon compound
- 48 Cry
- 50 Out of use, as a wd.

© 2016 King Features Synd., Inc.

FEAR KNOT

By: rj johnson

DOUBT? ...OR DARE!



Unscramble these twelve letter strings to form each into an ordinary word (ex. **HAGNEC** becomes **CHANGE**). Prepare to use only **ONE** word from any marked (♥) letter string as each unscrambles into more than one word (ex. ♥**RATHE** becomes **HATER** or **EARTH** or **HEART**). Fit each string's word either across or down to knot all twelve strings together.

NEW! 30 Fear Knot puzzles \$3.50 • Six Volumes • Order at rbmall.com

Puzzles4Kids

by Helene Hovanec

WORD FUN

Study the two words on each line to find the **ONE** letter in the left column that is **NOT** in the word in the right column. Write the extra letter on the blank space. Then read **DOWN** to answer this riddle:

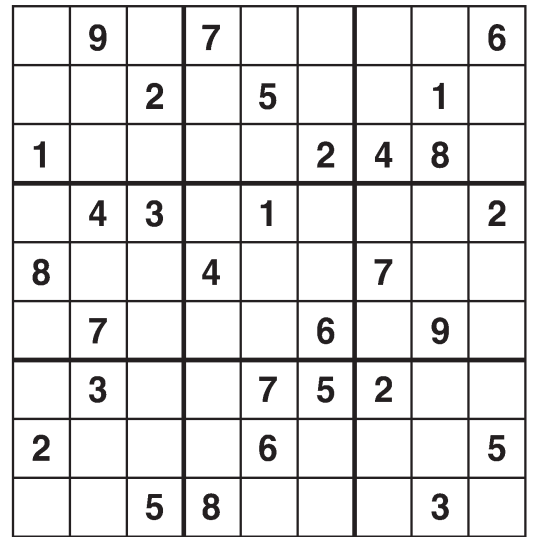
WHAT DID THE CINDERELLA FISH WEAR TO THE BALL?

- | | | | | | |
|--------|-----|-------|--------|-----|-------|
| WAGERS | ___ | SWEAR | DIFFER | ___ | FIRE |
| SALMON | ___ | MOANS | STABLE | ___ | BEAST |
| SATURN | ___ | URNS | SHEILA | ___ | HEALS |
| SPACER | ___ | CAPER | PLAYED | ___ | DELAY |
| SKATES | ___ | STAKE | PESTER | ___ | STEER |
| | | | DEGREE | ___ | GREED |
| | | | RAMBLE | ___ | BLAME |
| | | | SPARSE | ___ | REAPS |

For more puzzle fun, go to www.brainzles.com

Weekly SUDOKU

by Linda Thistle



Place a number in the empty boxes in such a way that each row across, each column down and each small 9-box square contains all of the numbers from one to nine.

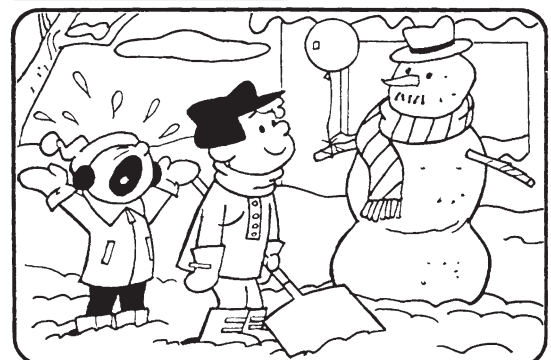
DIFFICULTY THIS WEEK: ★

- ★ Moderate
- ★★ Challenging
- ★★★ HOO BOY!

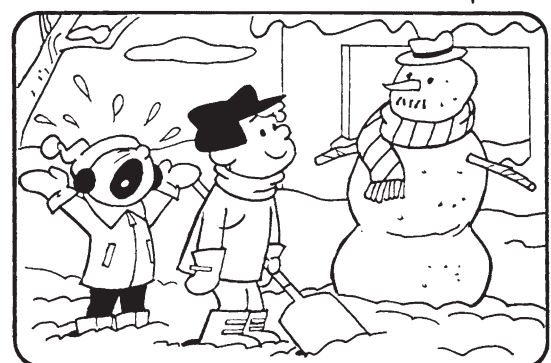
© 2016 King Features Synd., Inc.

HOCUS-FOCUS

BY HENRY BOLTINOFF



Find at least six differences in details between panels.



Differences: 1. Cloud is smaller; 2. Burton strip is missing; 3. Snowball is smaller; 4. Balloon is missing; 5. Scarf is shorter; 6. Hat is smaller.

NEW! 24 HOCUS FOCUS puzzles \$3.50 • 24 Volumes • Order at: rbmall.com

Just Like Cats & Dogs

by Dave T. Phipps



MAGIC MAZE • ME FIRST

O T P L M I E B X U Q N J G D
 Z W T Q E N K H D A X U R P M
 J G D A A X V S Q N K I F D A
 X V T R G Q O M J H F C A Y W
 U R P N E L J H F D B Z X V T
 R Q W O R D M M K K T I H L E
 F D B O Z O N E Y W E R V A I
 T R Q O E (M E A S L E S) I E N
 N L K I H M F T E T M D W M A
 D C A Z G N O K E M E X W E E
 V U S R D A E M Q M U I D E M

Find the listed words in the diagram. They run in all directions forward, backward, up, down and diagonally

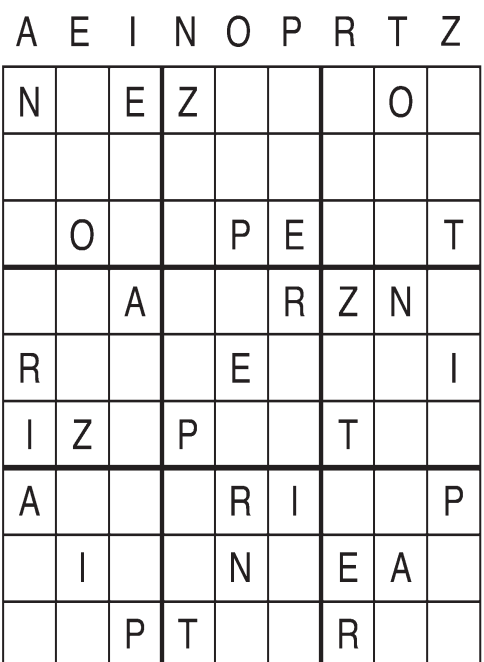
- | | | | |
|---------|---------|--------|--------|
| Mead | Meanie | Medium | Meteor |
| Meager | Measles | Meek | Meter |
| Meal | Meat | Meet | Mew |
| Meander | Media | Mekong | |

© 2015 King Features Syndicate, Inc. All rights reserved.

Letter Box

by Linda Thistle

Place a letter in the empty boxes in such a way that each row across, each column down and each small 9-box square contains all of the letters listed above the diagram. When completed, the row indicated will spell out a word or words.



© 2012 King Features Synd., Inc.

Even Exchange

by Donna Pettman

Each numbered row contains two clues and two 6-letter answers. The two answers differ from each other by only one letter, which has already been inserted. For example, if you exchange the A from **MASTER** for an I, you get **MISTER**. Do not change the order of the letters.

- | | | | |
|-----------------------|-------------|----------------------|-------------|
| 1. Hand warmer | ___ _ _ V | Circular map | ___ _ _ B |
| 2. More lethargic | S _ _ _ _ | Tulip or gladiola | F _ _ _ _ |
| 3. Weeping tree | _ _ I _ _ _ | Flounder | _ _ A _ _ _ |
| 4. Modify | _ _ _ _ E | Church table | _ _ _ _ A |
| 5. Park seat | _ _ E _ _ _ | Cluster of grapes | _ _ U _ _ _ |
| 6. Wander aimlessly | _ _ _ I _ _ | Gentle wind | _ _ _ A _ _ |
| 7. Perimeter | _ _ _ G _ _ | Hemingway's fish | _ _ _ L _ _ |
| 8. Hedge plant | _ _ H _ _ _ | Use steel wool | _ _ _ C _ _ |
| 9. Prying bar | _ _ _ _ R | Even | _ _ _ _ L |
| 10. Football takedown | _ _ A _ _ _ | Touch with a feather | _ _ _ _ I |

Salome's Stars

ARIES (March 21 to April 19) Aspects call for care in preparing material for submission. Although you might find it bothersome to go over what you've done, the fact is, rechecking could be worth your time and effort.

TAURUS (April 20 to May 20) The week is favorable for Bovines who welcome change. New career opportunities wait to be checked out. You also might want to get started on that home makeover you've been considering.

GEMINI (May 21 to June 20) You might have to be extra careful to protect that surprise you have planned, thanks to a certain snoopy someone who wants to know more about your plans than you're willing to share.

CANCER (June 21 to July 22) Family ties are strong this week, although an old and still-unresolved problem might create some unpleasant moments. If so, look to straighten the situation out once and for all.

LEO (July 23 to August 22) Although the Lion might see it as an act of loyalty and courage to hold on to an increasingly shaky position, it might be wiser to make changes now to prevent a possible meltdown later.

VIRGO (August 23 to September 22) Your gift for adding new people to your circle of friends works overtime this week, thanks largely to contacts you made during the holidays. A surprise awaits you at the week's end.

LIBRA (September 23 to October 22) Don't hide your talents. It's a good time to show what you can do to impress people who can do a lot for you. A dispute with a family member might still need some smoothing over.

SCORPIO (October 23 to November 21) Be open with your colleagues about your plan to bring a workplace matter out into the open. You'll want their support, and they'll want to know how you'll pull it off.

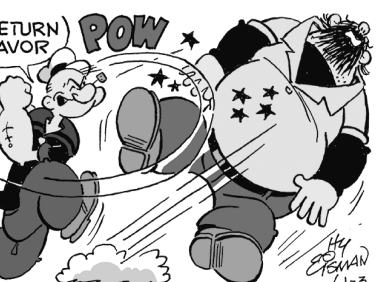
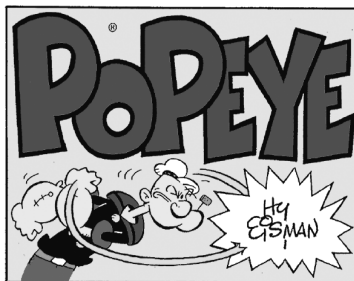
SAGITTARIUS (November 22 to December 21) Trying to patch up an unraveling relationship is often easier said than done. But it helps to discuss and work out any problems that arise along the way.

CAPRICORN (December 22 to January 19) While your creative aspect remains high this week, you might want to call on your practical side to help work out the why and wherefore of an upcoming decision.

AQUARIUS (January 20 to February 18) Dealing with someone's disappointment can be difficult for Aquarians, who always try to avoid giving pain. But a full explanation and a show of sympathy can work wonders.

PISCES (February 19 to March 20) Getting a job-related matter past some major obstacles should be easier this week. A personal situation might take a surprising but not necessarily unwelcome turn by the week's end.

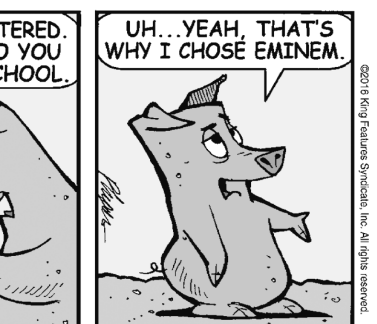
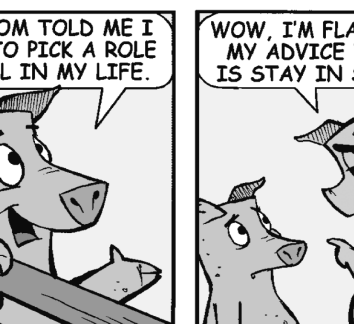
BORN THIS WEEK: You can be both a dreamer and a doer. You consider helping others to be an important part of your life.



R.F.D.



Amber Waves



The Spats



by Jeff Pickering