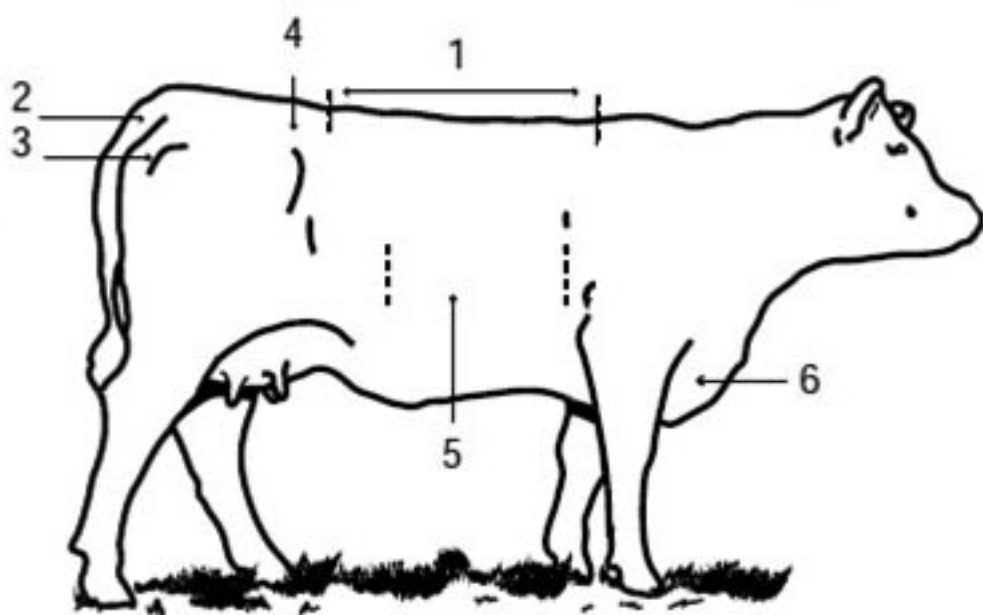


**Eric Baker**  
Estill County Extension  
Agent for Agriculture  
& Natural Resources

# Learn to use body condition scores as indicators of herd health

Anatomical regions used for determining BCS.



- 1 = Back
- 2 = Tail Head
- 3 = Pins
- 4 = Hooks
- 5 = Ribs
- 6 = Brisket

Early winter is an optimum time to prepare your spring-calving herd for reproductive success. Adequate nutrition from about 50 to 80 days prior to calving is critical to maximizing a cow's ability to rebreed and maintain a 365-day calving interval. A cow that gets inadequate nutrition or is thin at calving and breeding will take longer to come into heat and will require more services to conceive.

According to UK Extension beef specialist Les Anderson, the best method to evaluate the nutritional status of your herd is to do body condition scores. A body condition score is an estimate of the degree of body fatness of an animal, which gives us an estimate of the amount of body energy reserves available to the cow. Scores range from 1 to 9, with 1 meaning a cow is emaciated or extremely thin, while 9 indicates an animal is extremely obese. Beef producers should train themselves to identify cows that are too thin, cows that are marginal and cows that have an optimal body condition score for rebreeding. Body condition scoring is a tool to help plan your supplemental feeding program, so you can maintain adequate

productivity in your herd. You can determine body condition score by looking at the degree of sharpness or thinness in several areas of the cow's body. The ribs and backbone are two primary regions you need to examine to help establish body condition score. Other important areas are the tailhead, shoulder and brisket regions of the cow. In general, cows with more fat appear smoother in these areas to the point that individual bones are difficult to see. Cows that are too thin, scores of 3 or less, have easily identifiable fore and rear ribs, sharpness across the backbone, sharpness over the hook and pin bones near the tailhead and sharpness across the shoulders. These cows need to gain approximately 150-200 pounds before calving, if you want

them to rebreed in a timely fashion. Cows that are borderline have a body condition score of 4. These cows have easily identifiable 12th and 13th ribs, but their fore ribs are covered. The backbone and hooks and pins are still prominent but are not sharp in appearance. The shoulders are less defined. These cows need to gain about 75 to 100 pounds before breeding season. Cows that are in optimal body condition have scores of 5 or 6 and have a good overall appearance. No ribs are visible unless the animal has been shrunk. The backbone, hooks and pins appear rounded and not easily seen, and the area around the tailhead is filled in but not mounded. These cows simply need to maintain their weight until calving.

Research has shown that cows with scores less than 5 at calving have lower pregnancy rates and take longer to rebreed than cows with scores of 5 or higher. The optimum body condition score for mature cows is a 5 or 6. Heifers that are calving their first calf need to have a score of at least 6 to maximize rebreeding success. The best way to use body condition scoring is to sort cows according to their score at 90-100 days before calving and feed these groups according to their score and nutrient needs to optimize reproduction. Each body condition score typically represents 75 to 100 pounds of body weight. Analyze your feedstuffs so that you can accurately balance rations to meet the needs of each group of cows. This method not only ensures adequate breeding potential of your cowherd, but is also an efficient method of supplying nutrients to your cows. For more information on scoring body condition in your cow herd, contact the Estill County Cooperative Extension Service at 723-4557.

Educational programs of the Kentucky Cooperative Extension Service serve all people regardless of race, color, age, sex, religion, disability or national origin.

## Wishing Well®

5	7	8	3	4	6	5	7	5	8	3	6	8
F	S	E	S	C	B	A	E	M	X	P	E	P
7	4	8	5	3	2	3	8	2	7	5	8	3
C	H	A	I	R	B	E	N	E	U	L	S	A
5	3	4	6	8	7	4	5	7	4	2	7	5
Y	D	A	F	I	R	L	H	E	L	G	Y	A
7	5	8	4	8	6	4	6	4	7	6	5	3
O	R	O	E	N	L	N	E	G	U	X	M	H
4	8	6	2	4	6	8	3	2	4	6	3	5
E	O	I	E	S	B	F	O	N	A	L	P	O
3	5	4	5	4	6	8	4	7	2	7	4	8
E	N	H	Y	E	E	D	A	R	E	F	D	U
2	8	7	2	7	2	8	7	8	7	8	2	7
R	T	U	O	T	U	I	U	E	R	S	S	E

HERE IS A PLEASANT LITTLE GAME that will give you a message every day. It's a numerical puzzle designed to spell out your fortune. Count the letters in your first name. If the number of letters is 6 or more, subtract 4. If the number is less than 6, add 3. The result is your key number. Start at the upper left-hand corner and check one of your key numbers, left to right. Then read the message the letters under the checked figures give you.

©2016 King Features Syndicate, Inc. All rights reserved.

## CryptoQuip

This is a simple substitution cipher in which each letter used stands for another. If you think that X equals O, it will equal O throughout the puzzle. Solution is accomplished by trial and error.

Clue: E equals I

E RWXL F TPTKEND LEDV DLCKGC  
GCVETKCN XS QESSCMCWD NEHCN.  
CGCMPQXQP TFKKN ED F OERCM'N  
QXHCW.

© 2016 King Features Synd., Inc.

CryptoQuip puzzles \$3.50 • 24 Volumes • Order at: rbmamall.com

## CryptoQuote

AXYDLBAAXR  
is LONGFELLOW

One letter stands for another. In this sample, A is used for the three L's, X for the two O's, etc. Single letters, apostrophes, the length and formation of the words are all hints. Each week the code letters are different.

HPGKRJG (SOCMSOPXX) OLK  
FYWJRYF ROY QYKR EYLMK JA  
OPK XPAY RJ DMYDLMPGZ OPK  
PBDMJBDRC KDYYSOYK.  
— A.Y. KBPRO

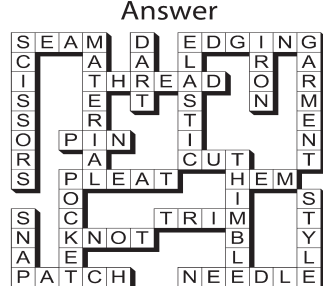
©2016 King Features Synd., Inc.

New! CryptoQuote puzzles \$3.50 • 6 Volumes • Order at: rbmamall.com

# Puzzle Answers

November 30, 2016

### Puzzles4Kids



### Letter Box

Solution

R	P	B	D	O	Y	M	U	A
D	A	U	M	R	P	B	O	Y
M	O	Y	A	B	U	R	D	P
U	M	R	O	P	D	A	Y	B
A	Y	D	R	U	B	P	M	O
O	B	P	Y	A	M	D	R	U
Y	D	A	B	M	O	U	P	R
B	U	M	P	Y	R	O	A	D
P	R	O	U	D	A	Y	B	M

### FEAR & KNIGHT



### Even Exchange

- answers
- Greet, Great
  - Pastry, Pantry
  - Simple, Sample
  - Elmer, Elder
  - Lobby, Hobby
  - Reheat, Repeat
  - Dream, Dread
  - March, Match
  - Ashen, Aspen
  - Bottle, Battle

### Weekly SUDOKU

Answer

8	5	6	9	3	1	4	7	2
3	4	7	2	6	8	9	5	1
9	2	1	5	7	4	8	3	6
4	6	2	1	8	3	7	9	5
5	3	8	7	2	9	6	1	4
1	7	9	6	4	5	2	8	3
2	9	4	3	1	7	5	6	8
6	1	5	8	9	2	3	4	7
7	8	3	4	5	6	1	2	9

### King Crossword

Solution time: 21 mins.

L	O	B	O	B	B	C	S	E	G	O
A	G	I	N	E	E	R	A	P	E	D
G	R	O	W	H	E	A	D	L	I	N
S	E	S	A	M	E	G	U	I	D	E
R	I	M	S	E	V	E				
H	E	A	D	L	O	N	G	A	M	O
O	R	B	O	T	E	R	I	O	U	
P	R	O	M	H	E	A	D	A	C	H
V	I	A	S	N	I	P				
S	C	E	N	I	C	D	O	P	I	N
H	E	A	D	R	O	O	M	E	S	A
I	D	L	E	D	N	A	A	L	P	S
M	E	L	D	Y	E	S	L	E	S	T

# Sammie's Furniture & Appliances

722 Main St., Ravenna • 723-6562  
Open Mon.-Fri., 9-6, and Sat., 9-5

- Dutch Craft Amish-Made Bedding
- New Bedroom Suites
- New Living Room Suites
- New Recliners & Lift Chairs
- We do Special Orders
- Tables & Chairs

Free Delivery & Set Up  
12 Months Same As Cash\*  
\*With Approved Credit

# NEAL'S STEREO SHOP

(606) 975-3796  
River Drive & Main in Ravenna

# NEAL'S AUTO CENTER & BODY SHOP

Mechanical Work  
Main Street in Ravenna  
Call 606-975-3796

### The Garden Bug

**Christmas rose** blooms in early winter in mild climates, and late winter or early spring where the soil freezes hard. Native to Europe and western Asia, this plant loves shade or dappled sun and moist soil. It ranges in many colors from white and cream to pink, rose, burgundy and light green. Amend the soil with plenty of organic matter, such as aged leaf mold and compost. They are deer- and vole-resistant and spread nicely on their own.

— Brenda Weaver  
Source: www.hgtv.com, www.whiteflowerfarm.com

## Stickeler's Puzzle

Using the numbers 1 through 9 once (and only once) on the lefthand side of the equation, can you come up with three different positive fractions that equal 1?

$$\frac{A}{BC} + \frac{D}{EF} + \frac{G}{HI} = 1$$

BC, EF and HI are two-digit positive numbers. A, D and G are single-digit positive integers.

## PAINTED ROOFING METAL

We offer 16 colors of our #1 grade metal roofing tin cut to the inch. Now with a 40-year warranty, this ensures a roof that will last for years. Higher Gauge -- Same Low Prices!! We carry all metal roofing accessories! Phone in or Fax orders welcome

Call 606-593-7080  
We now accept Credit & Debit Cards!

## Wolf Creek Metal

Open five days for your convenience  
Mon.-Fri. 8am-5  
LOCATED  
1.5 miles south of Booneville, KY on Hwy. 11 in the Lone Oak Industrial Park

### Bible Trivia Answers

Casey's trivia book "Know It? ... or Not?" is available from BearManorMedia.com

ANSWERS: (1) New; (2) Save those who look for Him; (3) British Museum; (4) Eleven; (5)