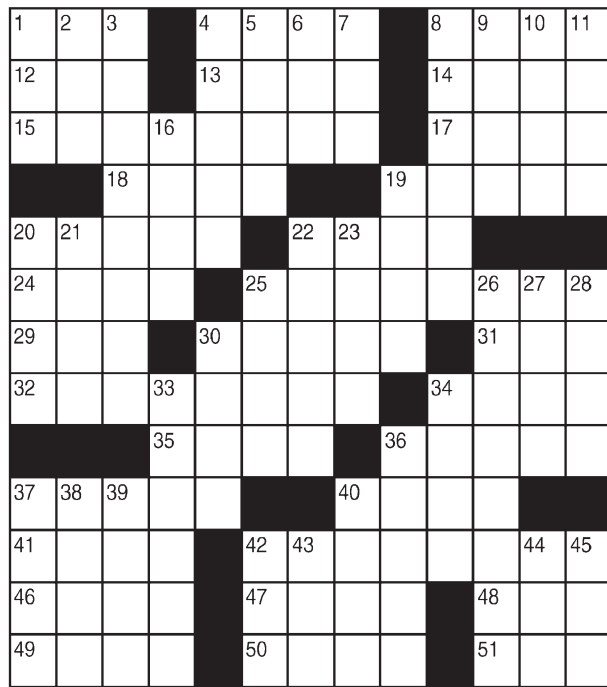


# King Crossword

## ACROSS

- 1 Cookie container
- 4 Acknowledge
- 8 Work units
- 12 — Khan
- 13 Part of N.B.
- 14 Panorama
- 15 Acted as a go-between
- 17 Sicilian volcano
- 18 Data
- 19 Armada
- 20 Propaganda pamphlet
- 22 Unctuous
- 24 Solemn pledge
- 25 Haphazardly
- 29 Cravat
- 30 Square dance group
- 31 Ostrich's cousin
- 32 Chess climaxes
- 34 Finished
- 35 Addict
- 36 Small lizard
- 37 Characteristic
- 40 Antitoxins
- 41 Count counterpart
- 42 Fully filled
- 46 Regimen



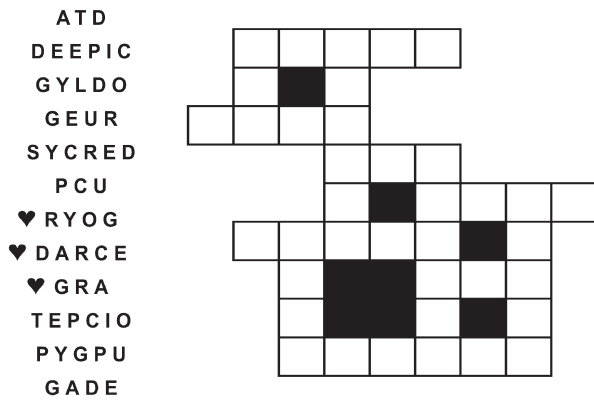
- 47 N. Mex. neighbor
- 48 Historic time
- 49 Do in
- 50 Electrician's supply
- 51 Parched
- 9 Ceremony
- 10 Actor
- 11 Hit a fly
- 16 Foot fraction
- 19 Level
- 20 Schlep
- 21 Reason for a tarp
- 22 Playful water critter
- 23 Enrages
- 25 Pinnacle
- 26 Strayed
- 27 Portent
- 28 Gloom
- 30 Brewer's oven
- 33 Culpable
- 34 Gumbo need
- 36 Capture
- 37 Danson and Koppel
- 38 Bar
- 39 Geometry calculation
- 40 Use a teaspoon
- 42 Witnessed
- 43 "Entourage" role
- 44 Mess up
- 45 Rotation duration

© 2016 King Features Synd., Inc.

# FEAR KNOT

By: rj johnson

DOUBT? ... OR DARE!



Unscramble these twelve letter strings to form each into an ordinary word (ex. HAGNEC becomes CHANGE). Prepare to use only ONE word from any marked (♥) letter string as each unscrambles into more than one word (ex. ♥RATHE becomes HATER or EARTH or HEART). Fit each string's word either across or down to knot all twelve strings together.

NEW! 30 Fear Knot puzzles \$3.50 • Six Volumes • Order at rbmall.com

# Puzzles4Kids

by Helene Hovanec

## WORD FUN

Study the two words on each line to find the ONE letter in the left column that is NOT in the word in the right column. Write the extra letter on the blank space. Then read DOWN to answer this riddle:

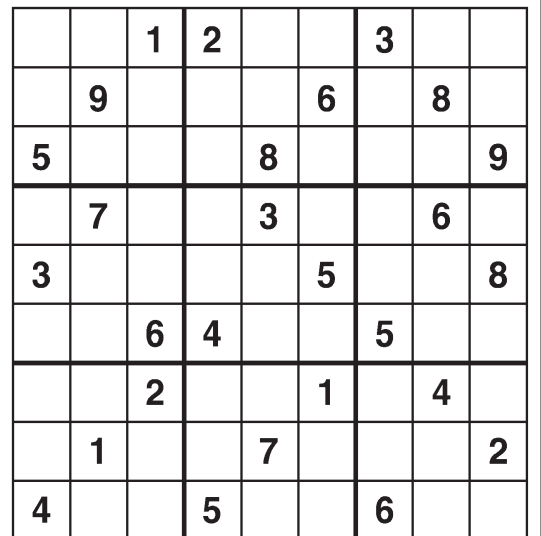
WHAT DO FARM WORKERS GET ON VALENTINE'S DAY?

- |        |     |       |        |     |       |
|--------|-----|-------|--------|-----|-------|
| HACKER | ___ | CREAK | ASKING | ___ | GAINS |
| COPIER | ___ | PRICE | SALAMI | ___ | LAMAS |
| FRIDGE | ___ | FIRE  | TIMERS | ___ | MERIT |
| SUNSET | ___ | TUNES | SPACED | ___ | CAPED |
| MARGIE | ___ | GRIME | CORNEA | ___ | ACORN |
| PRANCE | ___ | CAPER | SALINE | ___ | ALIEN |
| BARKED | ___ | BREAK |        |     |       |

For more puzzle fun, go to www.brainzles.com

# Weekly SUDOKU

by Linda Thistle



Place a number in the empty boxes in such a way that each row across, each column down and each small 9-box square contains all of the numbers from one to nine.

DIFFICULTY THIS WEEK: ★★

★ Moderate ★★ Challenging  
★★★ HOO BOY!

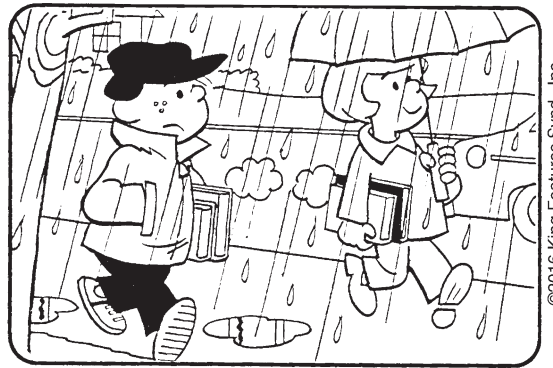
© 2016 King Features Synd., Inc.

# HOCUS-FOCUS

BY HENRY BOLTINOFF



Find at least six differences in details between panels.



Find at least six differences in details between panels.

New! 24 HOCUS FOCUS puzzles \$3.50 • 24 Volumes • Order at: rbmall.com

# Just Like Cats & Dogs

by Dave T. Phipps



# MAGIC MAZE

TWIN — U.S. PLACES

Y V R O L S H E B X U R O L I  
 E B Y V Y E L L A V S Q S N K  
 H E S B Y T W T S R O L E J G  
 E B Y R W T U M R G R P G N K  
 I G D M O U N T A I N B D Z X  
 V S Q O L B S M D P K I I S I  
 F G E C A E R Y E W L S R U S  
 Q A P N N L P A C J S E B P H  
 F E L I C A K A H Y V K S X S  
 V U P L S S Q P H I N A A M K  
 J H F E S K E E R C C L B O Z

Find the listed words in the diagram. They run in all directions forward, backward, up, down and diagonally

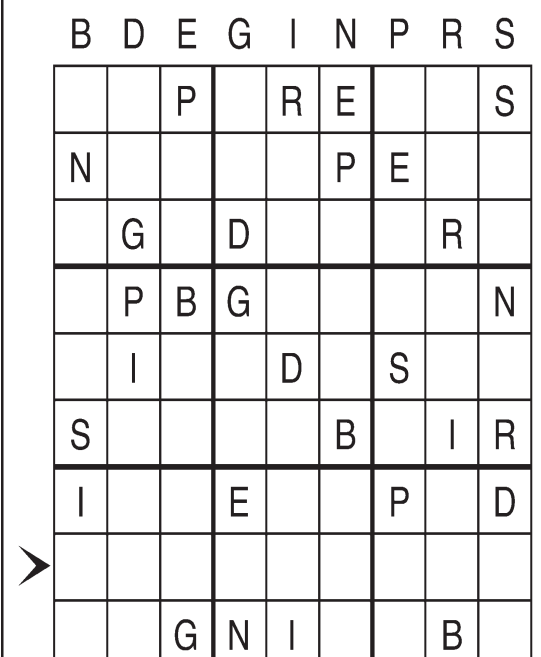
- |         |         |          |        |
|---------|---------|----------|--------|
| Bridges | Creeks  | Mountain | Rivers |
| Buttes  | Harbors | Oaks     | Spring |
| Cedars  | Lakes   | Peaks    | Valley |
| Chapel  | Maples  | Pines    |        |

© 2016 King Features Syndicate, Inc. All rights reserved.

# Letter Box

by Linda Thistle

Place a letter in the empty boxes in such a way that each row across, each column down and each small 9-box square contains all of the letters listed above the diagram. When completed, the row indicated will spell out a word or words.



© 2012 King Features Synd., Inc.

# Even Exchange

by Donna Pettman

Each numbered row contains two clues and two 6-letter answers. The two answers differ from each other by only one letter, which has already been inserted. For example, if you exchange the A from MASTER for an I, you get MISTER. Do not change the order of the letters.

- |                          |           |                       |           |
|--------------------------|-----------|-----------------------|-----------|
| 1. Young female horse    | ___ I ___ | Foolishness           | ___ O ___ |
| 2. Restaurant server     | ___ I ___ | Mr. Mitty or Cronkite | ___ L ___ |
| 3. Serena Williams' tool | ___ A ___ | Spaceship             | ___ O ___ |
| 4. Sluggish creature     | S ___     | Fabric                | C ___     |
| 5. Code inventor         | ___ R ___ | Mickey or Minnie      | ___ U ___ |
| 6. Alternate route       | ___ T ___ | Wolf down             | ___ V ___ |
| 7. Boxer Sonny           | ___ O ___ | Eavesdrop             | ___ E ___ |
| 8. Groucho's quiet kin   | ___ O ___ | Angelic instruments   | ___ S ___ |
| 9. Deep red gem          | ___ T ___ | Harvest               | ___ R ___ |
| 10. Alf or ET            | ___ I ___ | Steve or Woody        | ___ L ___ |

# Salome's Stars

**ARIES** (March 21 to April 19) St. Valentine's Day magic rules the entire week for romantic Rams and Ewes. Music, which is the food of love, is also strong. The weekend offers news both unexpected and anticipated.

**TAURUS** (April 20 to May 20) Your aspects favor the arts — which the Divine Bovine loves, loves, loves. Also, for those looking for romantic love, Cupid is available for requests. After all, his mother, Venus, rules your sign.

**GEMINI** (May 21 to June 20) Loving commitments continue to grow stronger. Ditto budding relationships. A recent move to help start up a new career-linked direction soon could begin to show signs of progress.

**CANCER** (June 21 to July 22) Single Moon Children might be eager to take that proverbial chance on love. But your more serious side will feel better if you take things slowly and give your moonstruck self more time.

**LEO** (July 23 to August 22) It's a love fest for Leos and Leonas this week. Paired Cats might expect to be purr-fectly in sync. And with matchmaking friends, single Simbas searching for romance shouldn't have too far to look.

**VIRGO** (August 23 to September 22) More understanding on both sides can work miracles in restoring ailing relationships to health. Make the first move, and you'll be closer to your much-wanted reunion.

**LIBRA** (September 23 to October 22) Accept the fact that you are worthy of being loved, and you'll find proof in what is revealed to you over the course of the week. Also accept a compliment offered with great sincerity.

**SCORPIO** (October 23 to November 21) Planning to take a new direction in life is exciting. And so is a new awareness of someone's special affection. Expect a slow and mostly steady development of the situation.

**SAGITTARIUS** (November 22 to December 21) Although you might still feel you weren't treated quite right in a recent matter, all that will work out in time. Meanwhile, enjoy the week's special qualities and potentials.

**CAPRICORN** (December 22 to January 19) Deciding not to give up on a troubling romantic situation helps start the healing process. Expect to find some valuable insight into yourself as things move along.

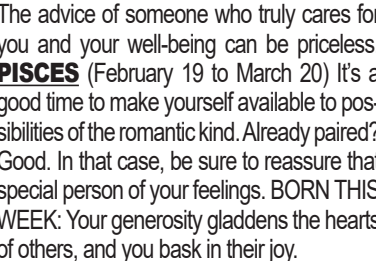
**AQUARIUS** (January 20 to February 18) The week is filled with positive potentials, but it's up to you to make the right choices. The advice of someone who truly cares for you and your well-being can be priceless.

**PISCES** (February 19 to March 20) It's a good time to make yourself available to possibilities of the romantic kind. Already paired? Good. In that case, be sure to reassure that special person of your feelings. BORN THIS WEEK: Your generosity gladdens the hearts of others, and you bask in their joy.

# POPEYE



# R.F.D.



# Amber Waves



# The Spats



# Amber Waves



# The Spats



# Amber Waves



# The Spats



© 2016 King Features Synd., Inc.