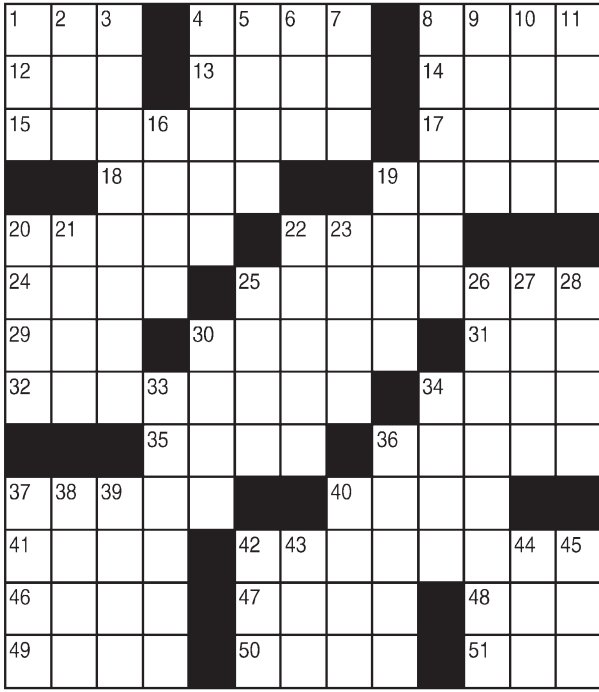


King Crossword

ACROSS

- 1 " - -la-la!"
- 4 Blue hue
- 8 Docket entry
- 12 Part of TGIF
- 13 Sitarist's rendition
- 14 Fairy tale preposition
- 15 What old soldiers do
- 17 Actress Gilpin
- 18 Sea flock
- 19 Packaged
- 20 Missouri river
- 22 One-on-one fight
- 24 Moistens in the morn
- 25 Clingy crustacean
- 29 Narc's org.
- 30 Sightless
- 31 Melody
- 32 Small telescope
- 34 On the briny
- 35 July birthstone
- 36 Ballet wear
- 37 Hiawatha's carrier
- 40 Antitoxins
- 41 Sandwich cookie
- 42 Shakespeare in-law
- 46 Historic name in TV talk
- 47 Reed instru-



- ment
- 8 Dome
- 28 Historic periods
- 9 Pinnacle
- 30 Sad
- 10 Aching
- 31 Rut
- 34 Emanation
- 11 Oklahoma city
- 36 Giggly sound
- 19 Flex
- 37 Barbershop need
- 20 Probability
- 21 Leak slowly
- 38 Geometry calculation
- 22 "Loves me (not)" flower
- 39 Jock's antithesis
- 23 Grecian vessels
- 40 Halt
- 42 Swine
- 25 Spill the beans
- 43 "The - Daba Honeymoon"
- 26 Gilligan, notably
- 44 Past
- 7 Yea canceler
- 27 Stead
- 45 Longing

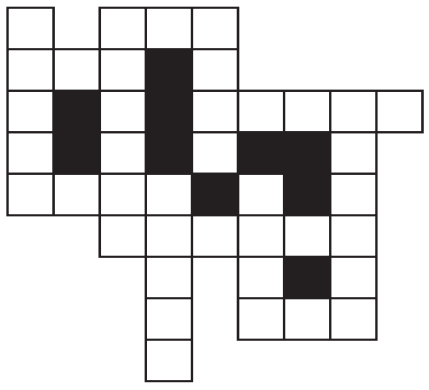
© 2016 King Features Synd., Inc.

FEAR KNOT

By: rj johnson

DOUBT? ... OR DARE!

- DPA
- DRUPIT
- ♥ DOWSR
- ♥ EMDA
- HORMET
- ♥ AWR
- ♥ UTSD
- MOTTE
- ♥ AMT
- RIMSUT
- ♥ ADPER
- PHWI



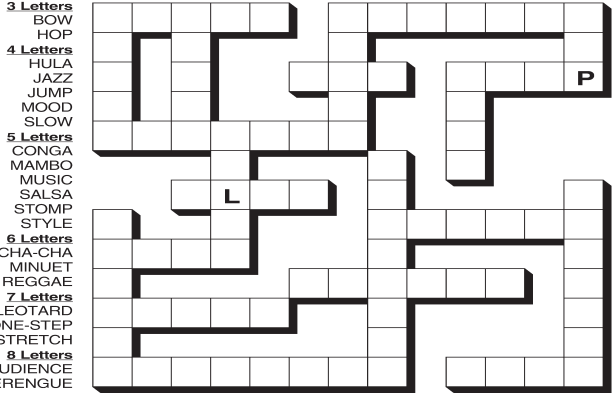
Unscramble these twelve letter strings to form each into an ordinary word (ex. HAGNEC becomes CHANGE). Prepare to use only ONE word from any marked (♥) letter string as each unscrambles into more than one word (ex. ♥RATHE becomes HATER or EARTH or HEART). Fit each string's word either across or down to knot all twelve strings together.

NEW! 30 Fear Knot puzzles \$3.50 • Six Volumes • Order at rbmall.com

Puzzles4Kids

by Helene Hovanec

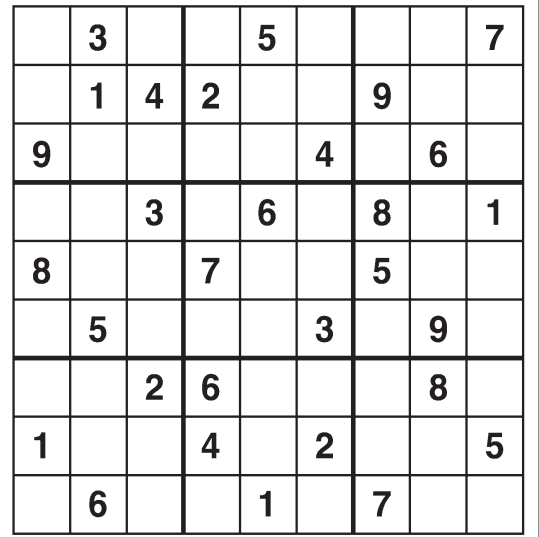
CRISSCROSS - LET'S DANCE!
Each word will fit into one spot in the grid. Use the starting letters as a guide and fit each word into its spot. All words will be used, so cross off each one after you put it into the grid.



- 3 Letters BOW
- 4 Letters HOP
- 4 Letters HULA
- 4 Letters JAZZ
- 4 Letters JUMP
- 4 Letters MOOD
- 4 Letters SLOW
- 5 Letters CONGA
- 5 Letters MANGO
- 5 Letters MUSIC
- 5 Letters SALSAL
- 5 Letters STOMP
- 5 Letters STYLE
- 6 Letters CHA-CHA
- 6 Letters MINUET
- 6 Letters REGGAE
- 7 Letters LEOTARD
- 7 Letters ONE-STEP
- 7 Letters STRETCH
- 8 Letters AUDIENCE
- 8 Letters MERENGUE

Weekly SUDOKU

by Linda Thistle



Place a number in the empty boxes in such a way that each row across, each column down and each small 9-box square contains all of the numbers from one to nine.

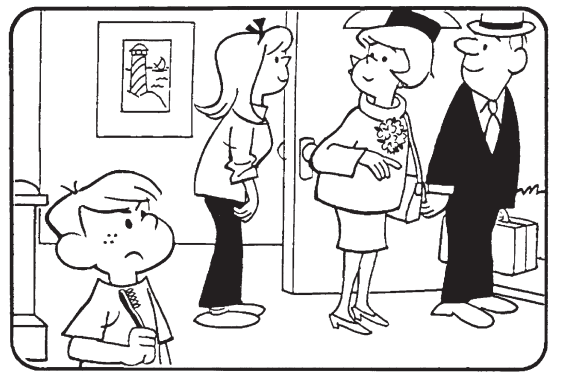
DIFFICULTY THIS WEEK: ♦

- ♦ Moderate
- ♦♦ Challenging
- ♦♦♦ HOO BOY!

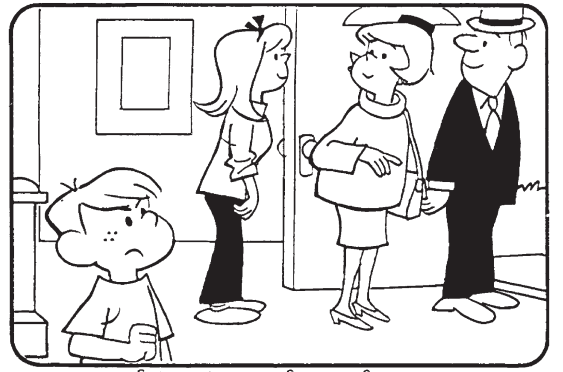
© 2016 King Features Synd., Inc.

HOCUS-FOCUS

BY HENRY BOLTIHOFF



Find at least six differences in details between panels.



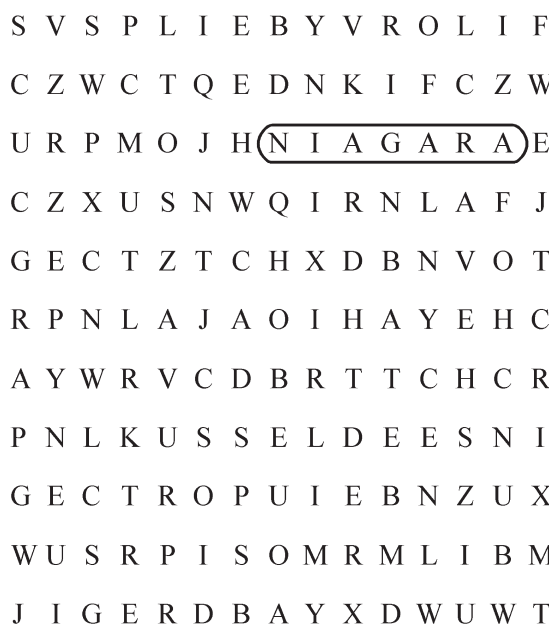
4. Hat is smaller. 5. Glasses is missing. 6. Suitcase is missing. 7. Toothbrush is missing. 8. Body is slimmer.
New! 24 HOCUS FOCUS puzzles \$3.50 • 24 Volumes • Order at: rbmall.com

Just Like Cats & Dogs

by Dave T. Phipps



MAGIC MAZE ● — GRAPES



Find the listed words in the diagram. They run in all directions forward, backward, up, down and diagonally

Bunch of	Muscadine	Red	Suitana
Concord	Muscat	Ripe	White
Dried	Niagara	Seedless	Wine
Hybrid	Port	Sour	

© 2016 King Features Syndicate, Inc. All rights reserved.
Find More Word Search Puzzles • 6 Volumes \$3.50 ea. • Order at: rbmall.com

Even Exchange

by Donna Pettman

Each numbered row contains two clues and two 6-letter answers. The two answers differ from each other by only one letter, which has already been inserted. For example, if you exchange the A from MASTER for an I, you get MISTER. Do not change the order of the letters.

- | | | | |
|---------------------------|-------------|------------------|-----------|
| 1. Jolly Yuletide visitor | ___ _ _ _ A | ___ _ _ Fe | ___ _ _ E |
| 2. Pulley | ___ O ___ | Bank robbery | ___ E ___ |
| 3. Brother of Pollux | ___ S ___ | Abductor | ___ P ___ |
| 4. Hardy's buddy | ___ _ _ _ L | Bacall or Hutton | ___ _ _ N |
| 5. Make a call | ___ _ _ E | Fake | ___ _ _ Y |
| 6. Houlihan's rank | ___ J ___ | City official | ___ _ _ Y |
| 7. Beguile | ___ _ _ C | All-inclusive | ___ _ _ R |
| 8. Eagle's claw | T ___ _ | Beauty shop | S ___ _ |
| 9. Dogsled driver | ___ _ _ H | Mobilize | ___ _ _ T |
| 10. Vanna or Betty | ___ H ___ | Compose | ___ _ _ R |

© 2016 King Features Synd., Inc.

Salome's Stars

ARIES (March 21 to April 19) A hectic period begins to wind down. Take time to draw some deep breaths and relax before getting into your next project. A long-absent family member makes contact.

TAURUS (April 20 to May 20) You're eager to move forward with a new challenge that suddenly dropped in your lap. But you'd be wise to take this one step at a time to allow new developments to come through.

GEMINI (May 21 to June 20) You're almost ready to make a commitment. A lingering doubt or two, however, should be resolved before you move ahead. An associate could provide important answers.

CANCER (June 21 to July 22) Caution is still the watchword as you move closer toward a decision about a new situation. If you act too fast, you might miss some vital warning signs. Go slowly and stay alert.

LEO (July 23 to August 22) Your new goal looks promising, and your golden touch does much to enhance its prospects for success. In your private life, Cupid does his best to make your new relationship special.

VIRGO (August 23 to September 22) That impatient side of yours is looking to goad you into moving before you're ready to take that big step. Stay calm and cool. Let things fall into place before you act.

LIBRA (September 23 to October 22) A legal matter you hoped could finally be settled could be a pesky problem for a while, until all the parties agree to stop disagreeing with each other. Be patient.

SCORPIO (October 23 to November 21) Partnerships — personal or professional — which began before the new year take on new importance. They also reveal some previously hidden risks. So be warned.

SAGITTARIUS (November 22 to December 21) Your associates are firmly on your side, and that persistent problem that has caused you to delay some activities should soon be resolved to your satisfaction.

CAPRICORN (December 22 to January 19) Favorable changes continue to dominate, and you should be responding positively as they emerge. Someone wants to become more involved in what you're doing.

AQUARIUS (January 20 to February 18) A friend wants to share a secret that could answer some questions you've wondered about for a long time. Meanwhile, travel aspects continue to be strong.

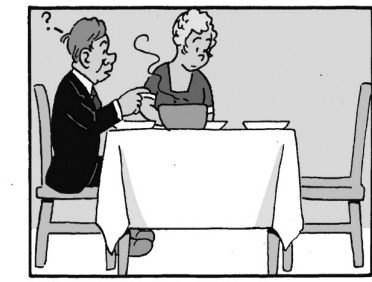
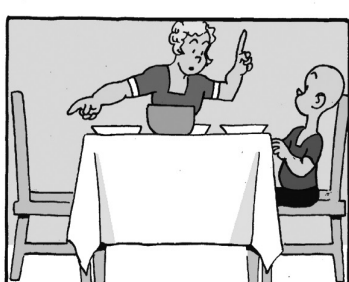
PISCES (February 19 to March 20) Stay on your new course despite so-called well-meaning efforts to discourage you. Rely on your deep sense of self-awareness to guide you to do what's right for you.

BORN THIS WEEK: You have the capacity to meet challenges that others might find overwhelming, and turn them into successful ventures.

© 2016 King Features Synd., Inc.

Henry

BY DON TRACHTE



by Mike Marland



Amber Waves



by Dave T. Phipps

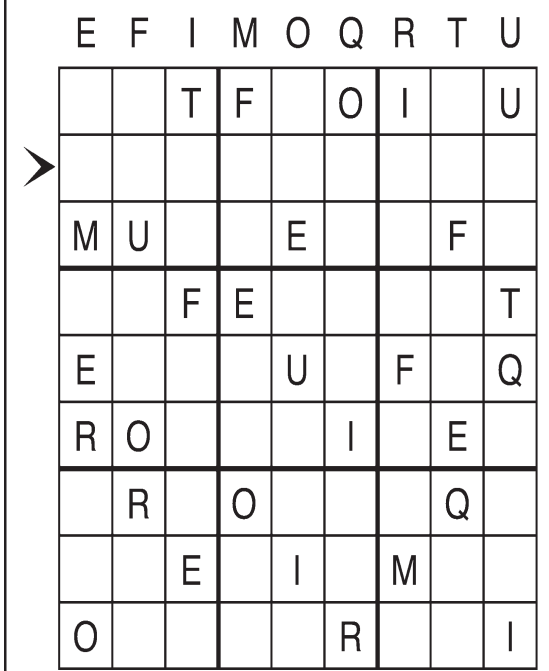


© 2016 King Features Synd., Inc.

Letter Box

by Linda Thistle

Place a letter in the empty boxes in such a way that each row across, each column down and each small 9-box square contains all of the letters listed above the diagram. When completed, the row indicated will spell out a word or words.



© 2012 King Features Synd., Inc.

The Spats



© 2016 King Features Synd., Inc.