

Engineers have best New Year's record in years

The Estill County Engineers were in action after press time in Corbin on Tuesday night against the 6-4 Barbourville Tigers.

Whatever the outcome of that game, this Estill squad will have the best New Year's record of any Engineers team in at least 15 years, even the 2014/15 team which opened 7-5 and finished 19-10.

Estill lost to Madison

Southern after opening with four wins. Following a win over Rockcastle, the Engineers fell to Danville in the Garrard County Holiday Invitational but rebounded to win two straight in the tournament, over Bell County and Richmond Model.

Junior Caleb Bonny had just reached his 1,000 points career milestone and continues to score well with 23

points against Model. Kevin Richardson scored 18 in the 69-54 win over Model.

Estill	15	16	14	24	69
Model	9	12	14	19	54

Estill scoring: Bonny 23, K. Richardson 18, A. Doty 9, L. Doty 6, Osborne 5, Benton 4, Long 2, T. Richardson 2.

Bonny followed the Model game with 25 more

in Estill's 62-54 win over East Carter on Saturday. The Engineers took on the Raiders at Estill County Middle School since the high school gym is getting a new floor.

East Carter matched up well with Estill in both height and talent. Although the Engineers appeared to be pulling away several times, the Raiders kept coming back to make it a game.

Bonny got 11 of his 25 points against East Carter on 11/14 free throw attempts. The Raiders tried to contain him the entire game which resulted in several "off the ball" personal fouls.

Andrew Doty had a good game on both the offensive and defensive end and ended up with 12 points for Estill.

Hunter Osborne had a great 4th quarter, first passing off on a break to Joe Benton who dropped in a three-pointer.

Osborne then hit his own three-pointer at 2:23 in the game to put Estill up 57-43, which he followed at 2:08 with a steal and a layup to put Estill out by 14, 57-53. Later in the game Osborne assisted to Robert Tipton for a score and Estill led 59-44 with 1:21 to go.

Estill	18	12	10	22	62
E. Carter	7	12	10	22	54

Estill scoring: Bonny 25, A. Doty 12, Osborne 6, K. Richardson 6, T. Richardson 5, Benton 3, Barnett 2, Tipton 2, L. Doty 1.

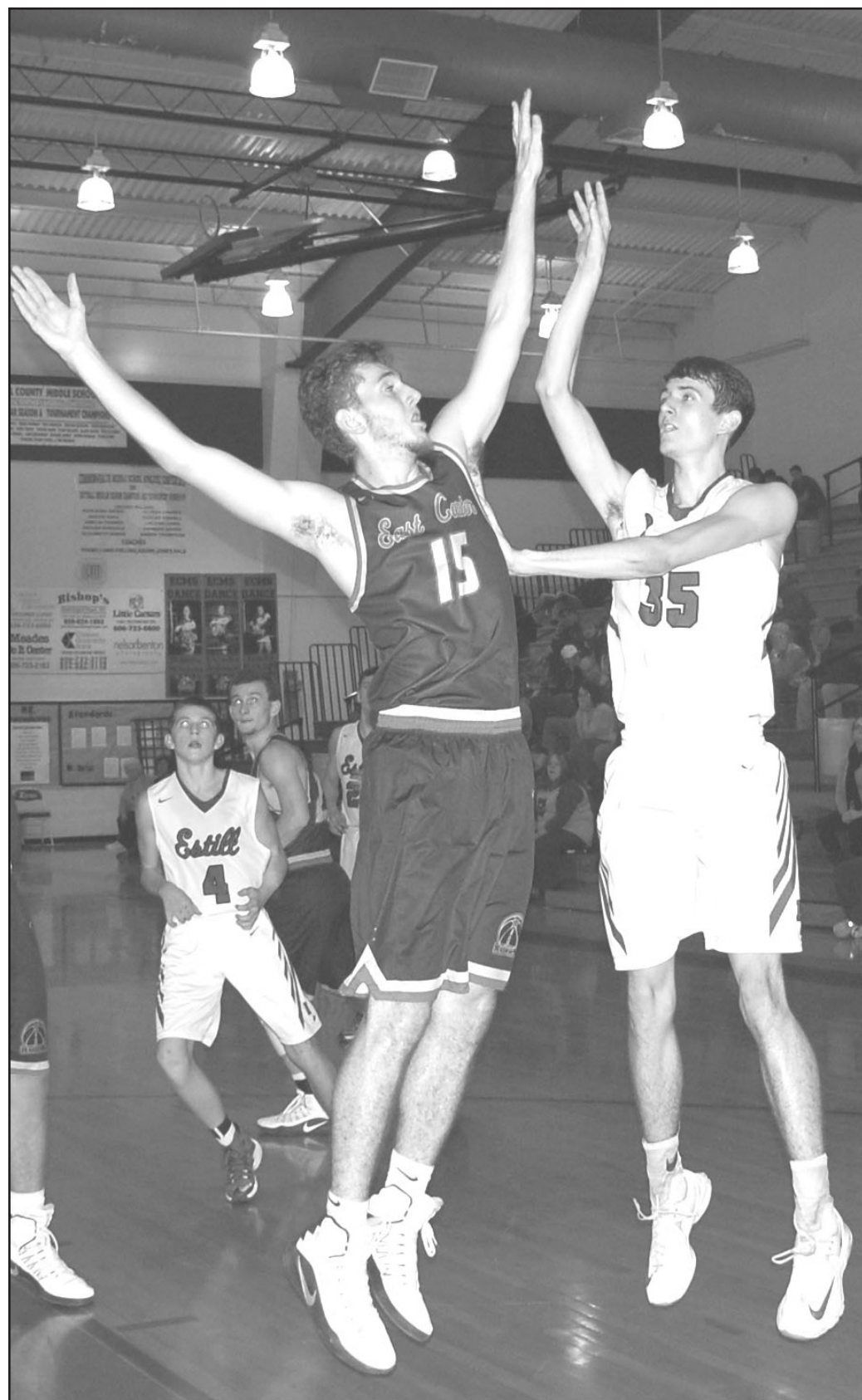
This is Coach Jon Bentley's 7th season as Estill's coach. He led the team to a 6-4 open in 2010/11 and 7-7 in 2013/14. Prior to Tuesday's game his unofficial record was 101-97.

Estill and Powell County are currently sitting atop the 14th Region. The Pirates are 9-3 under returning coach Dave Fraley. He coached the Pirates to the state tournament for two years in the mid-70's before departing to Pulaski County. There he took the Maroons to the state as well where they won it all in 1986.

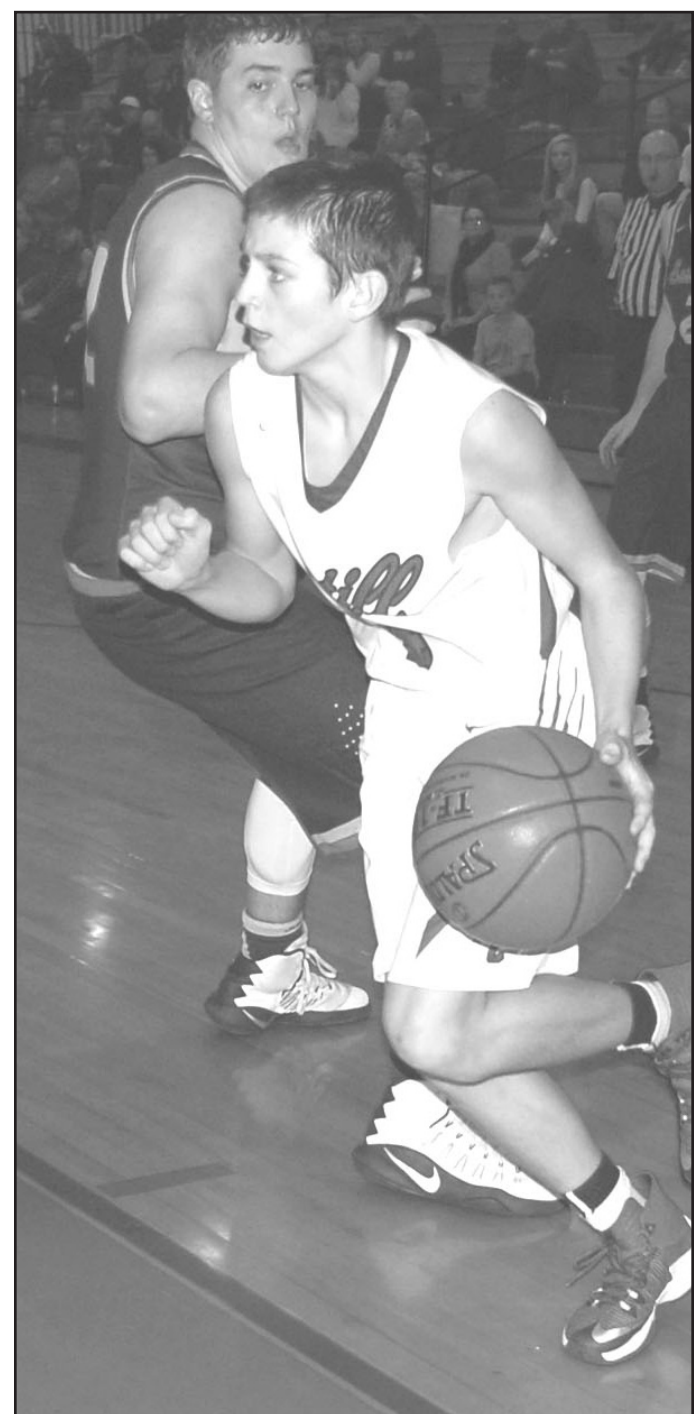
The Pirates are leading the

56th District with a 2-0 record, having won easily over the Lee County Bobcats and the Owsley County Owls.

Estill doesn't open district play until January 17th with an away game with Powell County.



Senior forward Kellis Barnett (#35) shoots over the East Carter Raiders defender during action on Saturday at Estill County Middle School.



Estill County Engineers freshman point guard Joe Benton dribbles along the baseline during action on Saturday. Estill won 62-54 over the Raiders of East Carter.

5-2 Lady Engineers Off To A Great Start

The Estill County Lady Engineers are off to a great start with a 5-2 record going into Tuesday night's tournament at West Jessamine against Harrison County.

This is the best start at Es-

till for 3rd year coach Brian Hall and likely the best start for the Lady Engineers in several years.

The Lady Engineers upset top-contender Knott County Central at home on the previous Saturday, then handily beat another top contender in the 14th Region, Letcher County Central, last Tuesday night.

Sidney Danyeur put in 24 points and got 11 rebounds in the big win over Knott County Central and Kaylee Treadway added 12 in the 63-60 victory.

Letcher County Central dropped to 6-3 after a 57-35 defeat at the hands of the Estill Lady Engineers.

Seniors Danyeur, Treadway, McKenzie Flynn and sophomore Meagan Bellamy, have been the big scorers for Estill, and another sophomore Kiely Flynn put in 13 points against Model.

There are eight teams scheduled in the West Jessamine tournament in addition to the host and Estill County. Others are Danville, Spencer County, Harrison County, Collins, Tates Creek and Bell County.

The Lady Engineers will take a break before returning to the hardwood on Saturday, January 7, 2017, against neighboring Jackson County's Lady Generals.

Estill's girls begin district play on Friday, January 13th at Stanton against the Powell County Lady Pirates.

The Lady Pirates are 3-5 overall and 1-1 in the district after beating Owsley County; then losing badly to Lee County's Lady Bobcats.

Lee County is also off to a good start with a 5-2 record as well. They are 1-0 in district play having beaten the Lady Pirates.

Despite the loss to Powell County the Lady Owls of Owsley County are also off to a great start with a 6-2 record.



Junior center Lane Doty (#34) pulls down a big rebound for the Estill Engineers on Saturday against the Raiders of East Carter. At right in #33 Robert Tipton, a senior center.