

Sarah Beth Terry Will Be Live In Concert Friday At ECHS



Tam's Front Porch Ponderings
Tammy Terry
 TamsFrontPorch@IrvineOnline.Net

Granny Muncie taught me to play the organ when I was seven years old. She was always singing or playing an instrument, music

came easy to her, well, at least that's the memory I have. Maybe she practiced for years and years, our time was cut short before I could ask her. I'd just turned eight when cancer took her in January, 1969. Her musical ability must have skipped a generation, I never got any better on the organ than that seven year old of long ago. Our children though? Now that's another story!

We are proud Band Boosters, we served twelve years under three different band directors and our children's lives were shaped by their experiences in the Estill County Band Program. Our daughter, Sarah Beth, went on to obtain her

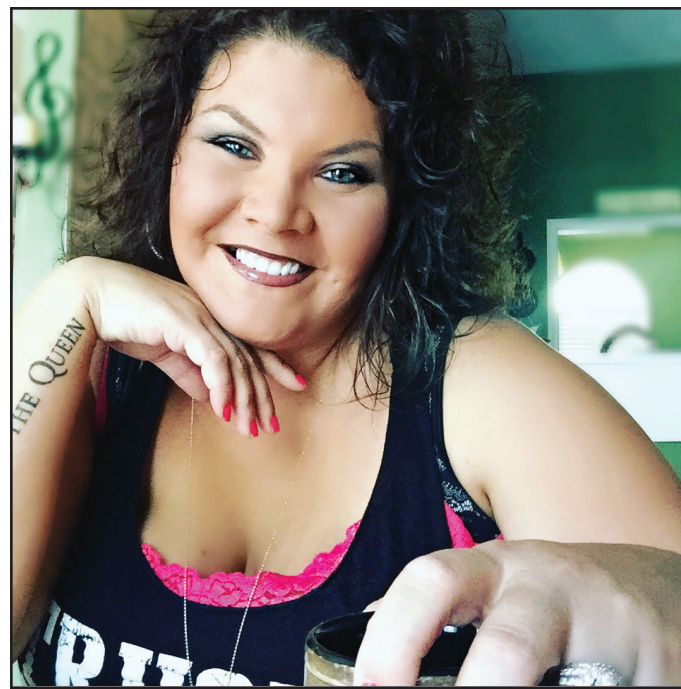
Bachelor's Degree of Arts at Transylvania University in music education. Our son, Dylan, attended Morehead State University and even though his field of study wasn't music, his profession is...music!

We love it! We've continued to travel the South, encouraging our children to follow their dreams. Dylan is the Drum Tech at Rose Pine High School, Rose Pine, Louisiana and the C.O.O. of Queen Bee & Company Music Studio, DeRidder, Louisiana. A teaching studio specializing in the instruction of piano, voice, guitar, drums, bass, songwriting and recording, founded by his sister, Sarah

Beth Terry Bonner, in 2013.

This brings us full circle. Sarah Beth is home for the week preparing for performances. As Sarah sits in my Granny Muncie's swing on our front porch, strumming a guitar and singing, the lightning bugs emerge from their hiding places and I think of Granny. Her talent runs through our children's veins, both of them accomplished musicians and as night falls the Whippoorwill sings along with Sarah Beth as she works on a new song. Life is good here in the country and I'd like to think my Granny had just a little something to do with it!

Sarah Beth will perform her original works Thursday night at The Steam Engine on Main Street at 9:00 p.m. Friday night she will be in concert at the Estill County High School Auditorium and debut new material from her upcoming album. Doors open at 7:00 p.m., concert at 8:00. Admission \$5.00, benefiting the Estill County Marching Engineers and the Estill Development Alliance. Saturday night she appears at High Tops Sports Bar in Somerset, KY. We hope to see you at one or maybe all, of her performances. If not, tune in to



Sarah Beth Terry

WCYO and listen for "We Don't Make New Memories Anymore", a song written by Sarah Beth, Jeff Silvey and Kris Rochester, and performed by Sarah Beth

Terry and Cody Purvis. Until next time....



Modern Woodmen Helps Raise \$5,000

Members of the Irvine Modern Woodmen of American chapter recently helped raise money for the Estill County High School Flo Party by parking cars at the Irvine Mushroom Festival.

The event, held on April 23, 2016, raised a total of \$5,000. This includes \$2,500 from Modern Woodmen matched by Modern Woodmen's home office through the organization's Matching Fund Program. The money will be used to fund the Estill County High School's FLO party.

The Matching Fund Program offers Modern Wood-

men members nationwide the chance to show their support for a community cause, organization or individual in need by holding fundraisers. Modern Woodmen matches money raised up to \$2,500. These fundraising projects contribute \$6.5 million to community needs nationwide each year.

Coordinated by local Modern Woodmen members, chapters provide opportunities to take part in social activities and community service projects to meet local needs.

As a tax-exempt fraternal benefit society, Modern Woodmen sells life insur-

ance, annuity and investment products not to benefit stockholders, but to improve quality of life for our members, their families and their communities. This is accompanied through social, charitable and volunteer activities. Annually, Modern Woodmen and its members provide more than \$23 million and nearly one million volunteer hours for community projects nationwide.

For more information about the local chapter and how you can get involved, contact Glenda Gay Oliver at (606) 723-7456 or <ggoliver@irvineonline.net>.



Glenda Gay Oliver of Modern Woodmen of American presents a \$2,500 check to Isabelle Abney, the FLO Party student liaison, given to the Estill County High School's after-prom FLO party to match \$2,500 raised at the Irvine Mushroom Festival parking cars for a total of \$5,000 raised.

In Memory of Ruby Powell

December 9, 1946 - July 25, 1993



Ruby Powell

Ruby is in the hearts and thoughts of her family and friends especially her daughters' Debbie, Missy, Karen and Gail who think of her every day.



There wasn't a dark cloud in the sky, but Tracy Snowden shaded the ladies who were registering people who attended the rally of Concerned Citizens of Estill County on Saturday during extreme heat.



Camp staff from Camp Burnamwood had activities, above, for children during Saturday's rally..

Locally Owned & Operated
Serving Estill County For Nine Years!



Signs — Banners — Trophies
Sports Uniforms — Auto Graphics
Plaques — Promotional Items
Baseball Parent Shirts

Phone 606-723-7344

75 Maggie Lane in Irvine

Email: tcemb@irvineonline.net

Check out our Website

www.TwinCedarsCustomEmbroidery.com

Owner: Mona Powell

Free Delivery!



LIVE IN CONCERT

Sarah Beth Terry



Friday, July 22 @ 8pm

ECHS AUDITORIUM

2675 WINCHESTER ROAD IRVINE, KY

Benefitting the ECHS Marching Band & The Estill Development Alliance
Doors open at 7pm

\$5 ADMISSION

Kids 5 & under free