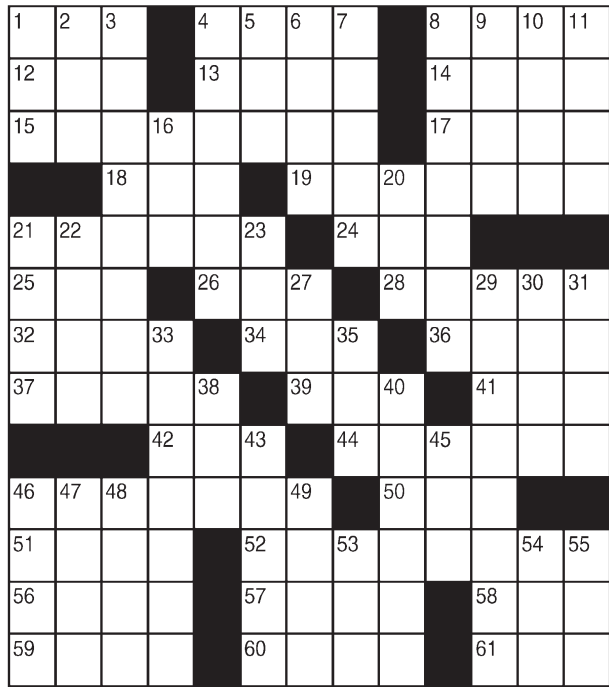


King Crossword

ACROSS

- 1 Vacationing
- 4 Rotating parts
- 8 Grouch
- 12 Melody
- 13 Garfield's pal
- 14 Golf target
- 15 Not restricted by convention
- 17 Facility
- 18 Sprite
- 19 Wing part
- 21 Strolled
- 24 Perched
- 25 Yoko of music
- 26 Storm center
- 28 Skewered entree
- 32 And others (Lat.)
- 34 Moray, e.g.
- 36 Vagrant
- 37 Aligned one self (with)
- 39 Cosmetics mogul Mary — Ash
- 41 Caviar base
- 42 Type measures
- 44 Fifth and Main, e.g.
- 46 Take away (from)
- 50 Dict. information
- 51 Jai follower



- 52 Out of jeopardy
- 56 Uninteresting
- 57 Sweater material
- 58 Chow down
- 59 Partner
- 60 Swiss range
- 61 Mound stat
- 7 Big rigs
- 8 Fast cat
- 9 Bellow
- 10 As well
- 11 Existed
- 16 Wapiti
- 20 "Mighty — a Rose"
- 21 Troubles
- 22 Opposed
- 23 Color
- 27 "A mouse!"
- 29 Elsa's story
- 30 Reed instrument
- 31 Transvaal trekker
- 33 With a suspicious eye
- 35 Fond du — "CSI" evidence
- 40 Sing in 60-Across?
- 43 Unstressed vowel
- 45 Ump
- 46 Arp's genre
- 47 Hebrew month
- 48 Lofty
- 49 Implement
- 53 Swab the deck
- 54 Corn spike
- 55 Greek H

© 2016 King Features Synd., Inc.

FEAR KNOT

By: rj johnson

DOUBT? ... OR DARE!

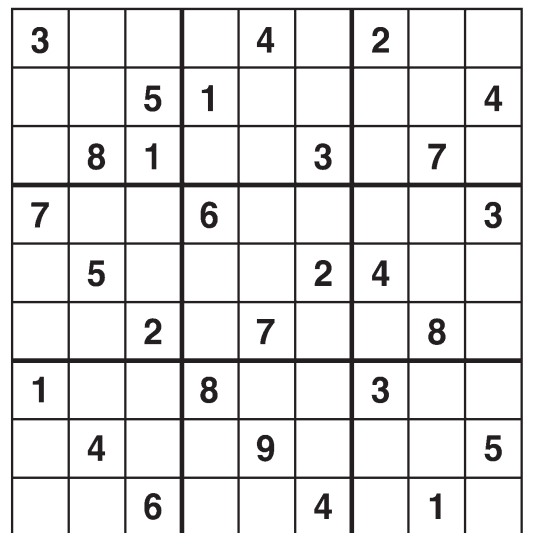
N M E
L I R L E G
♥ G R E L A
♥ L E H A
S E R F A H
I N G
♥ A M E R
♥ H E F S L
♥ R E A
♥ I M R A N G
M A U H N
G F N A

Unscramble these twelve letter strings to form each into an ordinary word (ex. H A G N E C becomes C H A N G E). Prepare to use only ONE word from any marked (♥) letter string as each unscrambles into more than one word (ex. ♥ R A T H E becomes H A T E R or E A R T H or H E A R T). Fit each string's word either across or down to knot all twelve strings together.

NEW! 30 Fear Knot puzzles \$3.50 • Six Volumes • Order at rbmamall.com

Weekly SUDOKU

by Linda Thistle



Place a number in the empty boxes in such a way that each row across, each column down and each small 9-box square contains all of the numbers from one to nine.

DIFFICULTY THIS WEEK: ♦♦

- ♦ Moderate
- ♦♦ Challenging
- ♦♦♦ HOO BOY!

© 2016 King Features Synd., Inc.

Puzzles4Kids

by Helene Hovanec

CODED RIDDLE

Change each letter to the one that comes immediately BEFORE it in the alphabet to find a riddle and its answer.

Here's a copy of the alphabet to guide you:

A B C D E F G H I J K L M N O P Q R S T U V W X Y Z

I P X N V D I T I P V M E Z P V L O P X

C F G P S F Z P V U F B D I U S J D L T U P B

I P S T F ? N P S F U I B O U I F I P S T F .

Even Exchange

by Donna Pettman

Each numbered row contains two clues and two 6-letter answers. The two answers differ from each other by only one letter, which has already been inserted. For example, if you exchange the A from MASTER for an I, you get MISTER. Do not change the order of the letters.

- | | | | |
|--------------------|-----------|----------------------|-----------|
| 1. Tasteless | ___ L ___ | Trademark | ___ R ___ |
| 2. Offer evidence | ___ V ___ | Investigation | ___ B ___ |
| 3. Curious George | M ___ _ | Pack animal | D ___ _ |
| 4. Stretch | ___ H ___ | Respond | ___ T ___ |
| 5. Shudder | ___ H ___ | Wood splinter | ___ L ___ |
| 6. Greek capital | ___ S ___ | Goddess of wisdom | ___ A ___ |
| 7. Hunky dory | ___ W ___ | Use one's nose | ___ M ___ |
| 8. Commuter boat | F ___ _ | Seinfeld or Springer | J ___ _ |
| 9. Hooting primate | ___ B ___ | Actor Mel | ___ S ___ |
| 10. Out of funds | ___ O ___ | Decelerate | ___ A ___ |

Just Like Cats & Dogs

by Dave T. Phipps



MAGIC MAZE

WHITE — : ANIMALS

G I E B Y O V R O L I F C Z W
S P T Q N K O I F C Z W U R P
E L E P H A N T S M M J H E C
A Z E E K X U S A H N Q N L J
B G E R H C Z R X K A V T R P
A N O C R S L L J H C R W E C
S T A H Y I W X V E I O K T R
S P I N N L U K O I L H C G E
C N B Z X W U Q S F E A R P O
O M L J I G E D S B P W H A Y
X W U T S Q P O N L K K J W H

Find the listed words in the diagram. They run in all directions forward, backward, up, down and diagonally

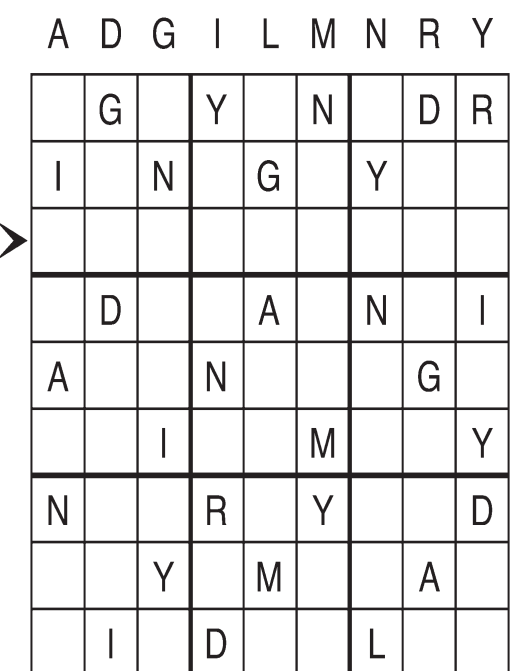
- | | | | |
|----------|---------|-----------|-------|
| Ants | Hawk | Rhino | Stork |
| Cockatoo | Marlin | Seabass | Whale |
| Elephant | Pelican | Sheep | Wolf |
| Fox | Perch | Squirrels | |

© 2016 King Features Syndicate, Inc. All rights reserved.

Letter Box

by Linda Thistle

Place a letter in the empty boxes in such a way that each row across, each column down and each small 9-box square contains all of the letters listed above the diagram. When completed, the row indicated will spell out a word or words.



© 2012 King Features Synd., Inc.

Salome's Stars

ARIES (March 21 to April 19) As tensions ease on the home front, you can once more focus on changes in the workplace. Early difficulties are soon worked out. Stability returns as adjustments are made.

TAURUS (April 20 to May 20) A new romance tests the unattached Bovine's patience to the limit. But Venus still rules the Taurean heart, so expect to find yourself trying hard to make this relationship work.

GEMINI (May 21 to June 20) It's a good time to consider home-related purchases. But shop around carefully for the best price — whether it's a new house for the family or a new hose for the garden.

CANCER (June 21 to July 22) A contentious family member seems intent on creating problems. Best advice: Avoid stepping in until you know more about the origins of this domestic disagreement.

LEO (July 23 to August 22) A recent job-related move proves far more successful than you could have imagined. Look for continued beneficial fallout. Even your critics have something nice to say.

VIRGO (August 23 to September 22) Ease up and stop driving yourself to finish that project on a deadline that is no longer realistic. Your superiors will be open to requests for an extension. Ask for it.

LIBRA (September 23 to October 22) You should soon be hearing some positive feedback on that recent business move. An old family problem recurs, but this time you'll know how to handle it better.

SCORPIO (October 23 to November 21) Some surprising statements shed light on the problem that caused that once-warm relationship to cool off. Use this newly won knowledge to help turn things around.

SAGITTARIUS (November 22 to December 21) Your spiritual side is especially strong at this time. Let it guide you into deeper contemplation of aspects about yourself that you'd like to understand better.

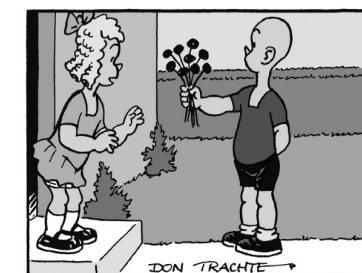
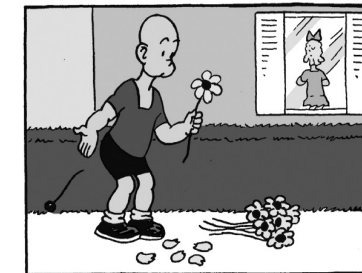
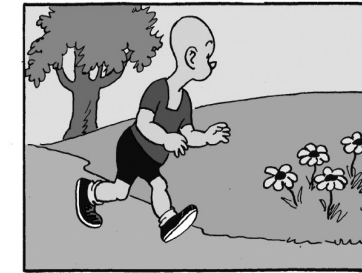
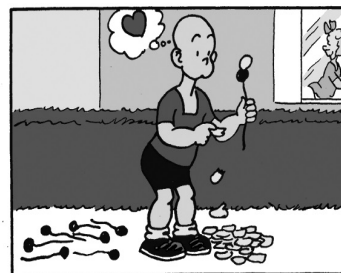
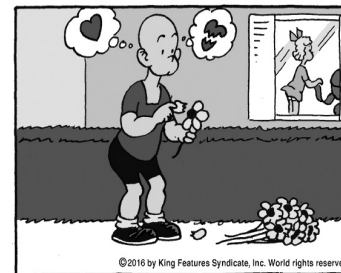
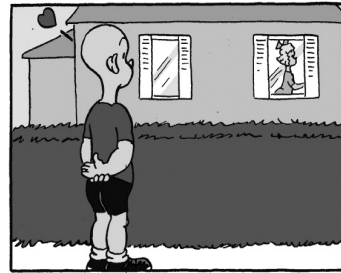
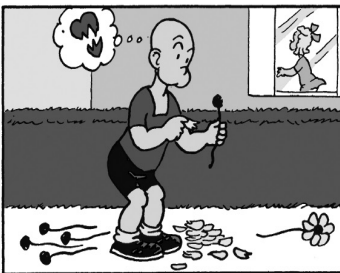
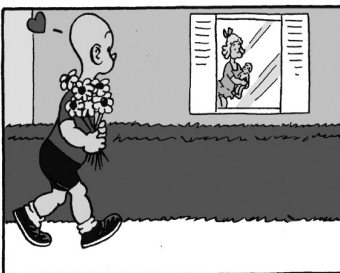
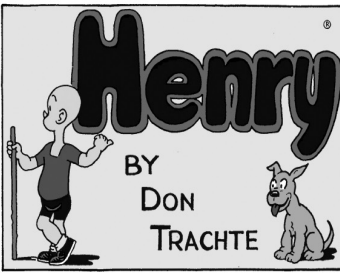
CAPRICORN (December 22 to January 19) Your merrier aspect continues to dominate and to attract folks who rarely see this side of you. Some serious new romancing could develop out of all this cheeriness.

AQUARIUS (January 20 to February 18) You're always concerned about the well-being of others. It's time you put some of that concern into your own health situation, especially where it involves nutrition.

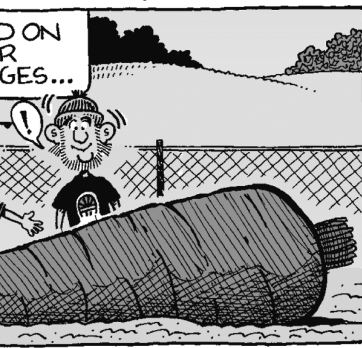
PISCES (February 19 to March 20) Just when you thought your life had finally stabilized, along comes another change that needs to be addressed. Someone you trust can help you deal with it successfully.

BORN THIS WEEK: You have a sixth sense when it comes to finding people who need help long before they think of asking for it. And you're right there to provide it.

© 2016 King Features Synd., Inc.



R.F.D.



Amber Waves



The Spats



© 2016 King Features Synd., Inc.