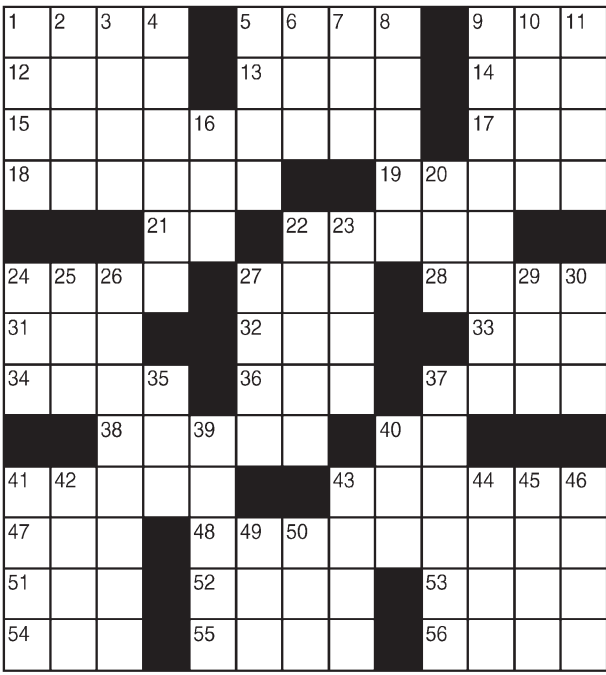


King Crossword

ACROSS

- 1 Stroller
- 5 Goya subject
- 9 Playwright Levin
- 12 Emanation
- 13 Press agent?
- 14 Affirmative action?
- 15 Stormy, as weather
- 17 IRS employee
- 18 Dwell
- 19 Bygone anesthetic
- 21 "Monopoly" corner
- 22 "Car Talk" medium
- 24 Clone
- 27 Solidify
- 28 Coconut provider
- 31 Many millenia
- 32 Lubricate
- 33 Afternoon social
- 34 Ness or Lomond
- 36 Whatever number
- 37 Membership
- 38 Takes a break
- 40 Roker or Yankovic
- 41 Brother of Curly
- 43 Public celebration
- 47 Extinct kin of the kiwi



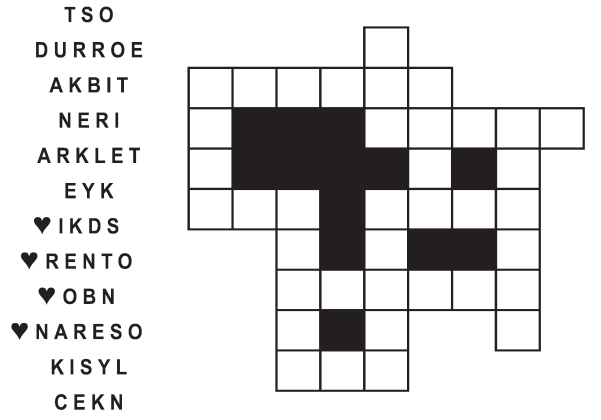
- 48 April payment
- 51 Boom times
- 52 Twice-monthly tide
- 53 String instrument
- 54 "Holy cow!"
- 55 Recedes
- 56 Gaelic
- DOWN**
- 1 Twosome
- 2 Mysterious character
- 3 Curved paths
- 4 Speak evil of
- 5 Marceau's specialty
- 6 Exist
- 7 Stewart of
- 8 Chipped in a chip
- 9 Not fully developed
- 10 Lasso
- 11 Hebrew month
- 16 Tokyo's old name
- 20 Gratuity
- 22 Jockey's handful
- 23 Partner
- 24 Aviv preceder
- 25 Court
- 26 Grow
- 27 Capricorn
- 29 Meadow
- 30 Wrestling surface
- 35 Height of fashion?
- 37 Record holder
- 39 Backbone
- 40 Intent
- 41 Self-satisfied
- 42 Crosby pal
- 43 Dandies
- 44 Use a teaspoon
- 45 New Mexico art colony
- 46 Wheelbase terminus
- 49 Kan. neighbor
- 50 Taxi

© 2017 King Features Synd., Inc.

FEAR KNOT

By: rj johnson

DOUBT? ... OR DARE!



Unscramble these twelve letter strings to form each into an ordinary word (ex. HAGNEC becomes CHANGE). Prepare to use only ONE word from any marked (♥) letter string as each unscrambles into more than one word (ex. ♥RATHE becomes HATER or EARTH or HEART). Fit each string's word either across or down to knot all twelve strings together.

NEW! 30 Fear Knot puzzles \$3.50 • Six Volumes • Order at rbmall.com

Puzzles4Kids

by Helene Hovanec

WORD FUN

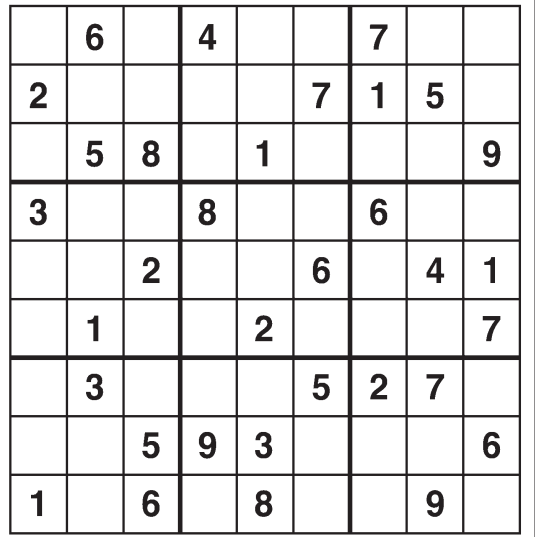
Study the two words on each line to find the ONE letter in the left column that is NOT in the word in the right column. Write the extra letter on the blank space. Then read DOWN to answer this riddle:

- WHAT KIND OF PANTS DO GHOSTS WEAR?**
- | | | | |
|--------|-------|--------|-------|
| BASTER | TEARS | JUNGLE | LUNGE |
| ADORED | ADDER | SEWARD | DRAWS |
| SOAKER | RAKES | ADRIAN | DRAIN |
| | | MINTED | TIMED |
| | | PASTEL | PLEAT |

© 2017 King Features Synd., Inc.

Weekly SUDOKU

by Linda Thistle



Place a number in the empty boxes in such a way that each row across, each column down and each small 9-box square contains all of the numbers from one to nine.

DIFFICULTY THIS WEEK: ♦

- ♦ Moderate
- ♦♦ Challenging
- ♦♦♦ HOO BOY!

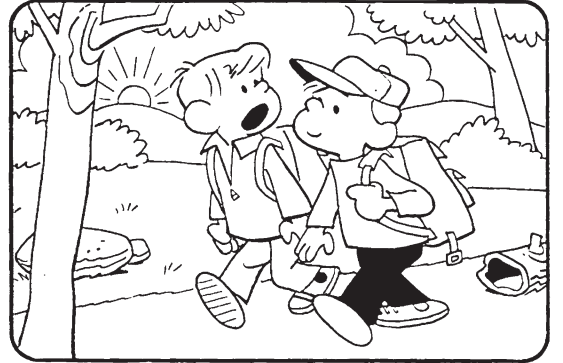
© 2017 King Features Synd., Inc.

HOCUS-FOCUS

BY HENRY BOLTIHOFF



Find at least six differences in details between panels.



Differences: 1. Sign is missing. 2. Cap is missing. 3. Jacket is opened. 4. Cuts are missing. 5. Flashlight is missing. 6. Rabbit is missing. 7. Jacket is missing. 8. Rabbit is missing. 9. Flashlight is missing. 10. Rabbit is missing.

24 HOCUS FOCUS puzzles \$3.50 • 24 Volumes • Order at: rbmall.com

Just Like Cats & Dogs

by Dave T. Phipps



MAGIC MAZE ● FOREFATHERS

K R O L J G D A X V S P N K K
 I F C A X H V T S J Q O Y C L
 J H E C A O T X E V Y R O T R
 P N L J H O N F F D E C B Y R
 X V T R C P F I N L N S P O E
 S M K L I E G O L A K M E L N
 D M O B R R S E H K C A D Z S
 X W A S H I N G T O N D Y W I
 U T O D D R A W R Q I A E O W
 N N L A A J I G F B P S R D C
 A Y M X W J V T S R P O N F L

Find the listed words in the diagram. They run in all directions forward, backward, up, down and diagonally

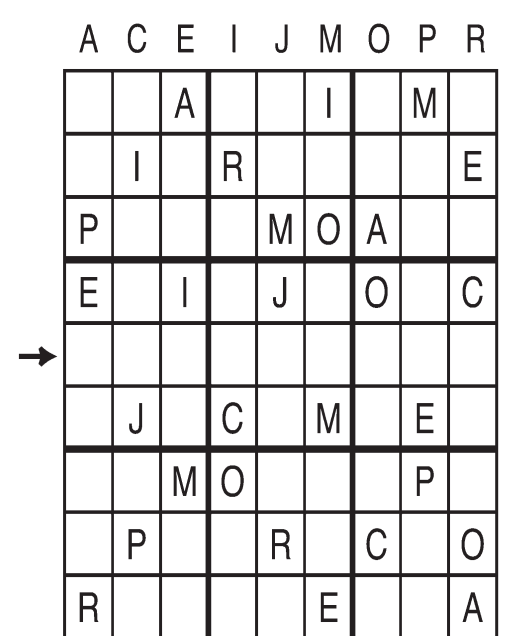
Biddle	Hooper	Madison	Washington
Dyer	J. Adams	Pinckney	Wisner
Elery	Jefferson	S. Adams	Wolcott
Franklin	Low	Ward	

© 2017 King Features Syndicate, Inc. All rights reserved.
 Find More Word Search Puzzles • 6 Volumes \$3.50 ea. • Order at: rbmall.com

Letter Box

by Linda Thistle

Place a letter in the empty boxes in such a way that each row across, each column down and each small 9-box square contains all of the letters listed above the diagram. When completed, the row indicated will spell out a word or words.



© 2010 King Features Synd., Inc.

Even Exchange

by Donna Pettman

Each numbered row contains two clues and two 6-letter answers. The two answers differ from each other by only one letter, which has already been inserted. For example, if you exchange the A from MASTER for an I, you get MISTER. Do not change the order of the letters.

- | | | | |
|----------------------|---------|-------------------|---------|
| 1. Fetch | _____ G | The very edge | _____ K |
| 2. Household servant | _____ L | Toast topper | _____ T |
| 3. Texas capital | A _____ | Actor Hoffman | D _____ |
| 4. Bracelet bangle | _____ M | Graph | _____ T |
| 5. Evening | N _____ | Legs on a spider | E _____ |
| 6. Larder | _____ N | Bakery product | _____ S |
| 7. Trench | D _____ | Toss the baseball | P _____ |
| 8. Re-heated | _____ M | Distorted | _____ P |
| 9. Fair-haired | _____ O | Tasteless | _____ A |
| 10. Subsequent | F _____ | Modify | _____ L |

© 2017 King Features Synd., Inc.

Salome's Stars

ARIES (March 21 to April 19) You're eager to Ram headfirst into that new project. But before you do, find out why some of your colleagues might not appear to be as gung-ho about it as you are.

TAURUS (April 20 to May 20) All that dedicated hard work you've been putting in pays off better than you expected. So go ahead, reward yourself with something befitting a beauty-loving Bovine.

GEMINI (May 21 to June 20) It's a good time to take on that new challenge. And if your self-confidence is sagging, instead of telling yourself why you can't do it, list all the reasons why you can.

CANCER (June 21 to July 22) This is one time when you might want to put some distance between you and the job at hand. It will give you a better perspective on what you've done and still need to do.

LEO (July 23 to August 22) Resist that occasional lapse into Leonine laziness that sometimes overtakes the Big Cat. Don't cut corners. Do the job right at this time, or you might have to redo it later.

VIRGO (August 23 to September 22) You know how you like to do things. And that's fine. But watch that you don't impose your methods on others. A current financial crunch soon eases.

LIBRA (September 23 to October 22) Someone might try to take advantage of your generosity. But before your sensitivity toward others overwhelms your good sense, check his or her story out carefully.

SCORPIO (October 23 to November 21) Your strong Scorpion sense of fairness lets you see all sides of a dispute. Continue to remain impartial as you help each person work through his or her particular grievance.

SAGITTARIUS (November 22 to December 21) Trust your keen Sagittarian insight to help you see through an offer that might not be all it claims. A closer look could reveal disturbing elements.

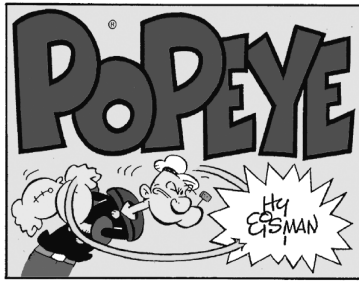
CAPRICORN (December 22 to January 19) With the Goat exhibiting a more dominant aspect these days, you could find it easier to make your case in front of even the most skeptical audience.

AQUARIUS (January 20 to February 18) Take things nice and easy as you continue to build up your energy reserves for a big change that's coming with the full Hunter's Moon on Oct. 29.

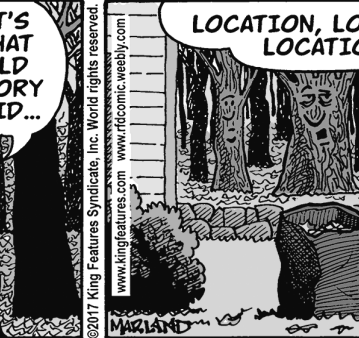
PISCES (February 19 to March 20) Recent news from someone you trust could help you make an important decision. Also, be prepared to confront an upcoming change in a personal situation.

BORN THIS WEEK: You can be firm in your own views, but also flexible enough to welcome the views of others.

© 2017 King Features Synd., Inc.



R.F.D.



Amber Waves



The Spats



© 2017 King Features Synd., Inc.