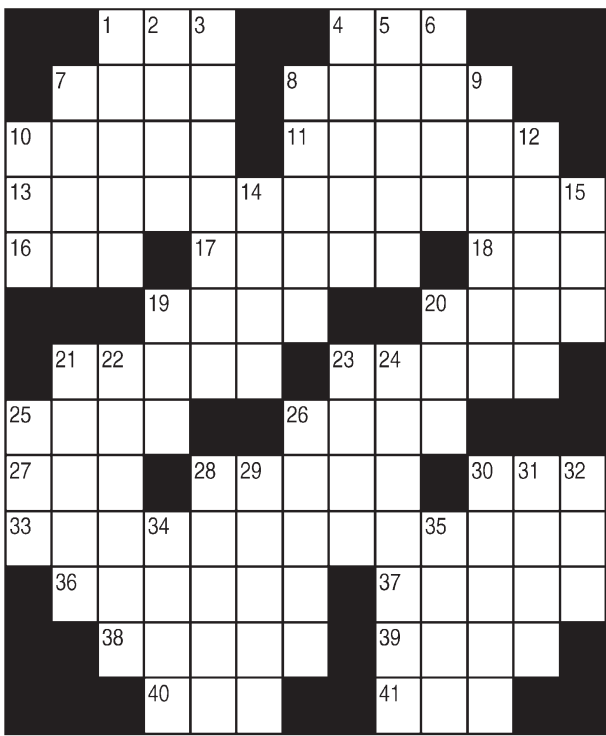


# King Crossword

**ACROSS**

- 1 Space
- 4 Recipe meas.
- 7 Lass
- 8 Luster
- 10 Calcutta's land
- 11 High, wispy cloud
- 13 Orphan Annie's benefactor
- 16 Really messy place
- 17 Frogs' hang-outs
- 18 Whopper
- 19 Crooked
- 20 Witnessed
- 21 Representative
- 23 Derivish
- 25 "Two and a Half Men" role
- 26 Oodles
- 27 Cacophony
- 28 Colorado tribe
- 30 Chum
- 33 Spider's cousin
- 36 Certain winner
- 37 Assessed
- 38 Tittles
- 39 Iowa State's home



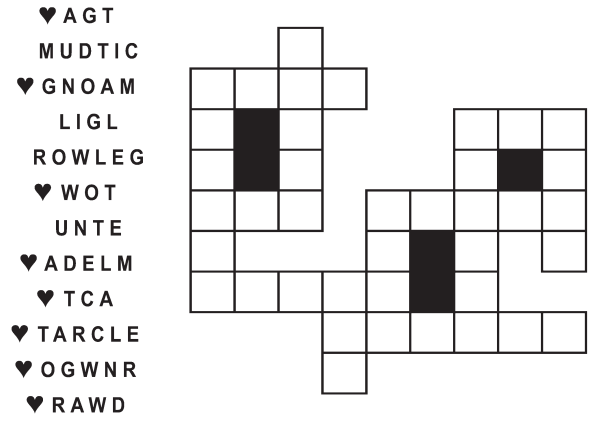
- 40 Scepter
- 41 Scratch
- 8 Meager
- 9 Centers
- 10 Egos' counterparts
- 12 Downhill athlete
- 14 Refuse to
- 15 D.C. fig.
- 19 Stiller or Affleck
- 20 Firmament
- 21 Rap sheet entry
- 22 Best Picture of 1982
- 23 Bambi, for one
- 24 28-Down, to Tokyo
- 25 Toss in
- 26 Io and Ganymede, e.g.
- 28 Japanese city
- 29 Homeric epic
- 30 Heavenly gate keeper St. —
- 31 Census stats
- 32 1960s hallucinogen
- 34 Entrance
- 35 Dalai —

© 2017 King Features Synd., Inc.

# FEAR KNOT

By: rj johnson

DOUBT? ... OR DARE!

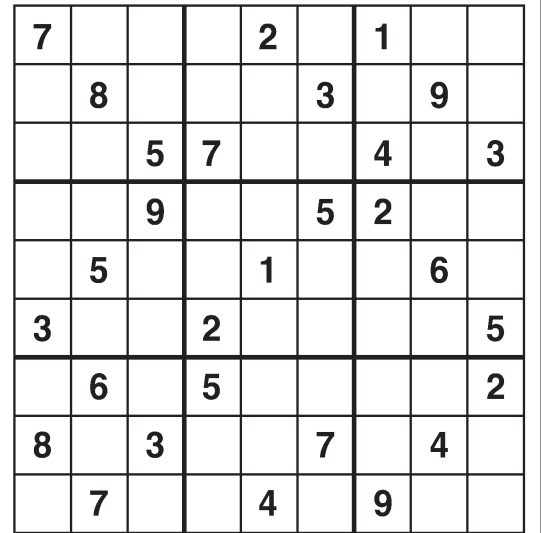


Unscramble these twelve letter strings to form each into an ordinary word (ex. HAGNEC becomes CHANGE). Prepare to use only ONE word from any marked (♥) letter string as each unscrambles into more than one word (ex. ♥RATHE becomes HATER or EARTH or HEART). Fit each string's word either across or down to knot all twelve strings together.

NEW! 30 Fear Knot puzzles \$3.50 • Six Volumes • Order at rbmall.com

# Weekly SUDOKU

by Linda Thistle



Place a number in the empty boxes in such a way that each row across, each column down and each small 9-box square contains all of the numbers from one to nine.

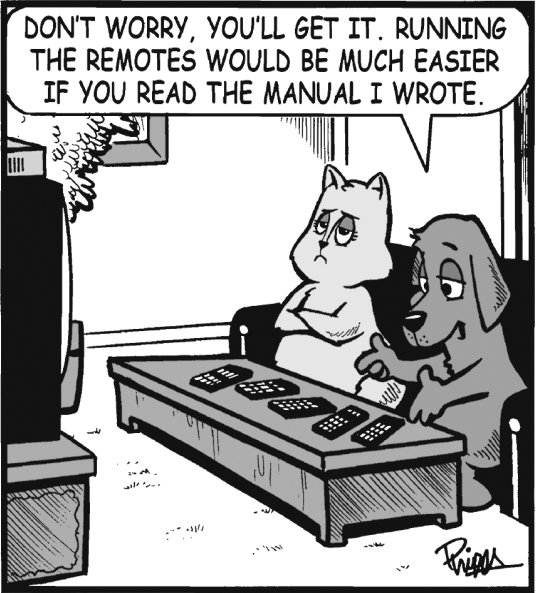
## DIFFICULTY THIS WEEK: ♦♦♦

- ♦ Moderate
- ♦♦ Challenging
- ♦♦♦ HOO BOY!

© 2017 King Features Synd., Inc.

## Just Like Cats & Dogs

by Dave T. Phipps



## MAGIC MAZE ● UP ON THE ROOF

S L J G S D A X V S P N K I F  
 C A X V S L Q O L J H E C A Y  
 X (WEATHERVANE) G E K  
 V T R P C N E N L J H F N D C  
 B Y X T S L V T A R P M I O I  
 M K A I D R G E D P I S H B N  
 Z H B D E H E X S H R G S W T  
 T U I M S T R T C Q O A A N N  
 L F R I A N N E T N A L L J I  
 I O D G F E D C A U Y F F O A  
 D X S W V V T S E L G N I H S

Find the listed words in the diagram. They run in all directions forward, backward, up, down and diagonally

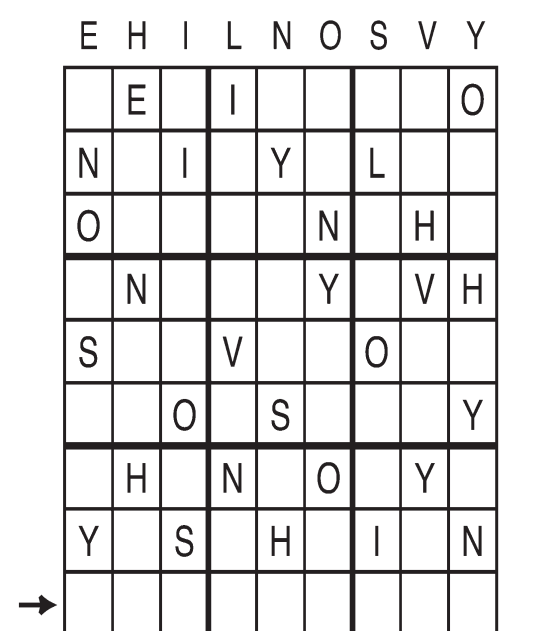
- Antenna
- Birds
- Chimney
- Dish
- Dormer
- Fiddler
- Flags
- Flashing
- Gutters
- Saint Nick
- Shingles
- Solar panels
- Thatch
- Vents
- Weather vane

© 2017 King Features Syndicate, Inc. All rights reserved.

## Letter Box

by Linda Thistle

Place a letter in the empty boxes in such a way that each row across, each column down and each small 9-box square contains all of the letters listed above the diagram. When completed, the row indicated will spell out a word or words.



© 2010 King Features Synd., Inc.

## Even Exchange

by Donna Pettman

Each numbered row contains two clues and two 6-letter answers. The two answers differ from each other by only one letter, which has already been inserted. For example, if you exchange the A from MASTER for an I, you get MISTER. Do not change the order of the letters.

- |                       |           |                   |           |
|-----------------------|-----------|-------------------|-----------|
| 1. Wave's peak        | _____ S _ | Tiptoed sneakily  | _____ P _ |
| 2. Tired              | _____ D   | Four pecks        | _____ L   |
| 3. Fire-starting rock | _____ L   | Barely audible    | _____ A   |
| 4. Throng of people   | _____ D   | Fury or Trigger   | _____ S   |
| 5. Lard               | G _ _ _ _ | Pleat             | C _ _ _ _ |
| 6. Blabbermouth       | _____ N   | Control knob      | _____ W   |
| 7. Windfall           | _____ U   | Femur and tibia   | _____ E   |
| 8. Roberts or Child   | _____ A   | Andrews or Newmar | _____ E   |
| 9. Easy to chew       | _____ E   | Kindling          | _____ I   |
| 10. Vapor             | _____ M   | Embezzle          | _____ L   |

© 2017 King Features Synd., Inc.

## Salome's Stars

**ARIES** (March 21 to April 19) A recent spate of confusion regarding decision-making begins to clear up. But caution is still advised. Continue to check details. An old friend has important news.

**TAURUS** (April 20 to May 20) You're anxious to see your ideas move from concept to development. But trying to force the issue right now could backfire. Wait for movement to resume shortly.

**GEMINI** (May 21 to June 20) Keep your thoughts focused on the positive as you deal with an unexpected turn of events in a personal or professional relationship. This could be the start of a welcome change.

**CANCER** (June 21 to July 22) Health matters take on added importance at this time. Deal with them before they interfere with your summer plans. A relationship that cooled off could soon warm up again.

**LEO** (July 23 to August 22) While a few details involving upcoming decisions still need your attention, you fun-loving Felines can begin to spend more time enjoying your lively social life again.

**VIRGO** (August 23 to September 22) That long-sought-after career change could require you to move to another city. Weigh your decision carefully before either accepting or rejecting the offer out of hand.

**LIBRA** (September 23 to October 22) A workplace situation can be awkward for Librans who prefer to keep their problems private. But you might have to "tell-all" if you hope to see it resolved in your favor.

**SCORPIO** (October 23 to November 21) Although your financial situation starts to improve this week, you still need to be cautious about money matters. Avoid major obligations, for now.

**SAGITTARIUS** (November 22 to December 21) Your overall aspects continue to brighten, allowing you to tackle long-deferred challenges. A change in travel plans could work to your benefit.

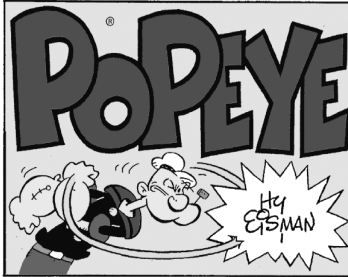
**CAPRICORN** (December 22 to January 19) Things seem to be slowing down for the usually restless Sea Goat. But wouldn't a bit of respite be just what you need right now? Activity picks up by the weekend.

**AQUARIUS** (January 20 to February 18) Personal relationships take a positive turn for both married and single Aquarians. Professional commitments, however, could be complicated by newly emerging events.

**PISCES** (February 19 to March 20) A decision you thought was final might be reopened as new facts are discovered. This could lead to a short-term problem, but ultimately might prove beneficial.

**BORN THIS WEEK:** Your keen interest in pursuing global events could lead you into a career as a politician or journalist.

© 2016 King Features Synd., Inc.



## R.F.D.

by Mike Marland



## Amber Waves

by Dave T. Phipps



## The Spats

by Jeff Pickering



© 2017 King Features Syndicate, Inc. All rights reserved.