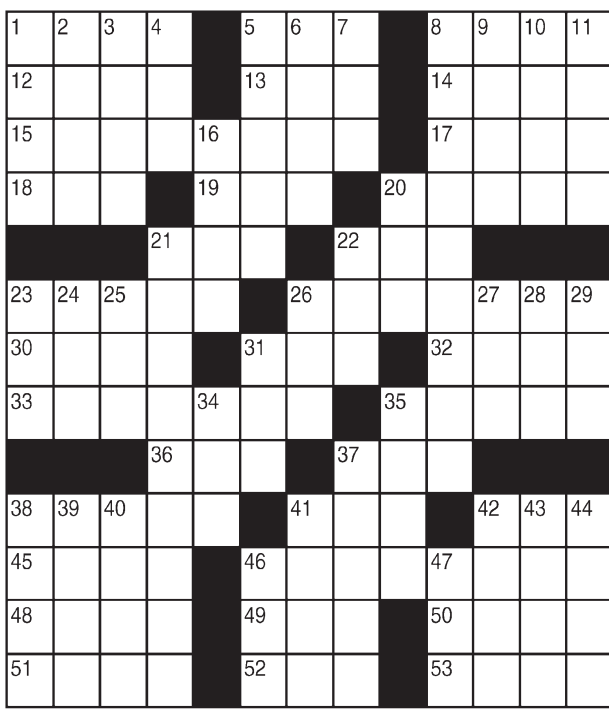


King Crossword

ACROSS

- 1 Jail, aboard ship
- 5 Altar affirmative
- 8 Mediocre
- 12 Ireland
- 13 Upper limit
- 14 One-liner, often
- 15 Strews about
- 17 Language of Pakistan
- 18 Light brown
- 19 Chapeau
- 20 Diamond corners
- 21 Gender
- 22 Humor
- 23 Range
- 26 Plant
- 30 October stone
- 31 Half a dozen
- 32 Sea eagle
- 33 Seeming contradiction
- 35 Magnificent
- 36 Ultra-formal wear
- 37 "Absolutely"
- 38 Malice
- 41 Sawbuck
- 42 Scalding
- 45 Speck
- 46 Breaks into smithereens
- 48 Addict
- 49 Listener
- 50 Neighborhood



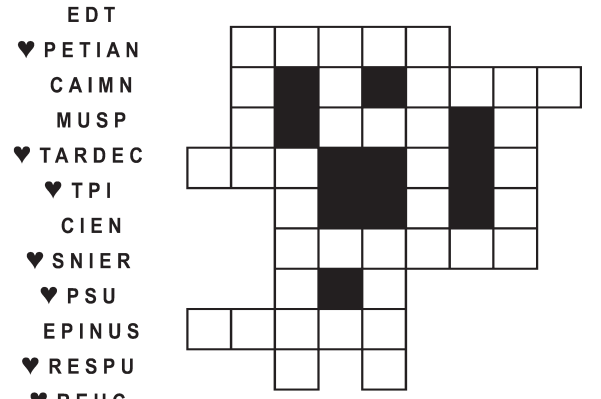
- 51 Jewels
- mine
- 31 Boston Red
- 10 Faction
- 11 Musical
- 34 Payable
- 16 You
- 35 Refined bloke
- 20 Pen name?
- 37 Century fractions
- 21 Spills everywhere
- 38 Overconfident
- 22 Costa —
- 39 Sit for a picture
- 3 Candle
- 40 Thing
- 4 Bribe
- 41 Comparison word
- 5 Glacier climber's tool
- 24 Bookkeeper (Abbr.)
- 42 Medal earner
- 6 Pub missile
- 25 Rowing need
- 43 Sandwich
- 7 Chances, for short
- 26 Repair
- 44 Despot
- 8 Illegal occupants
- 27 Raw mineral
- 46 Red or Black
- 9 Yours and
- 29 Nevertheless
- 47 Spigot

© 2017 King Features Synd., Inc.

FEAR KNOT

By: rj johnson

DOUBT? ... OR DARE!



EDT
 ♥ PETIAN
 CAIMN
 MUSPC
 ♥ TARDEC
 ♥ TPI
 CIEN
 ♥ SNIER
 ♥ PSU
 EPINUS
 ♥ RESPU
 ♥ REUC

Unscramble these twelve letter strings to form each into an ordinary word (ex. HAGNEC becomes CHANGE). Prepare to use only ONE word from any marked (♥) letter string as each unscrambles into more than one word (ex. ♥RATHE becomes HATER or EARTH or HEART). Fit each string's word either across or down to knot all twelve strings together.

NEW! 30 Fear Knot puzzles \$3.50 • Six Volumes • Order at rbmall.com

©2017 King Features Syndicate. All rights reserved.

Puzzles4Kids

by Helene Hovanec

RIDDLE SEARCH - LET'S PLAY FOOTBALL

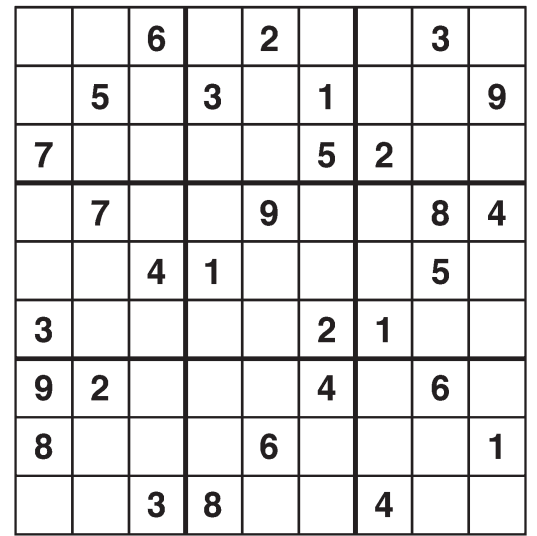
Look up, down, and diagonally, both forward and backward to find every word on the list. Circle each one as you find it. When all the words are circled, take the UNUSED letters and write them on the blanks below. Go from left to right and top to bottom to find the answer to this riddle: **Where do gardeners play football?**

BENCH	A	E	Y	A	L	P	E	R	S	T
DIVE	N	M	V	A	T	H	E	T	N	R
DRIVE	O	I	E	I	R	O	A	W	A	K
FREE KICK	R	T	K	V	R	D	O	S	P	C
GOALPOST	I	F	I	E	I	D	L	U	B	I
GRIDIRON	D	L	H	U	H	D	N	I	E	K
HALF TIME	I	A	M	C	B	T	O	W	N	E
HIKE	R	H	U	D	D	L	E	L	C	E
HUDDLE	G	O	A	L	P	O	S	T	H	R
PUNT	T	L	A	O	G	D	L	E	I	F
REPLAY										
SNAP										
STADIUM										
TOUCHDOWN										
YARD LINE										

Riddle answer: _____

Weekly SUDOKU

by Linda Thistle



Place a number in the empty boxes in such a way that each row across, each column down and each small 9-box square contains all of the numbers from one to nine.

DIFFICULTY THIS WEEK: ♦

- ♦ Moderate
- ♦♦ Challenging
- ♦♦♦ HOO BOY!

© 2017 King Features Synd., Inc.

Just Like Cats & Dogs

by Dave T. Phipps



©2017 King Features Syndicate, Inc. All rights reserved.

Even Exchange

by Donna Pettman

Each numbered row contains two clues and two 6-letter answers. The two answers differ from each other by only one letter, which has already been inserted. For example, if you exchange the A from MASTER for an I, you get MISTER. Do not change the order of the letters.

- | | | | |
|----------------------|---------------|--------------------|---------------|
| 1. Seinfeld or Lewis | J _ _ _ _ _ | NFL's Bradshaw | T _ _ _ _ _ |
| 2. Sawmill product | _ U _ _ _ _ | Flexible | _ I _ _ _ _ |
| 3. Long-necked bird | _ _ _ _ N _ _ | Fad | _ _ _ _ Z _ _ |
| 4. Crime squad | _ _ _ _ _ E | Insurance document | _ _ _ _ _ Y |
| 5. Sugary | _ _ W _ _ _ | Mattress cover | _ _ H _ _ _ |
| 6. Limb | _ _ _ A _ _ | Late morning meal | _ _ _ U _ _ |
| 7. Carpet location | _ _ _ _ R _ _ | Overflow of water | _ _ _ _ _ D |
| 8. Racket | N _ _ _ _ _ | Idaho's capital | B _ _ _ _ _ |
| 9. Leg joint | _ _ _ K _ _ | Fish for trout | _ _ _ G _ _ |
| 10. TV clicker | _ _ _ _ T _ _ | Get rid of | _ _ _ _ _ V _ |

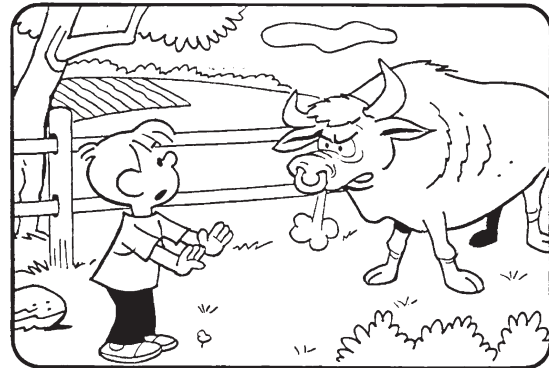
© 2017 King Features Synd., Inc.

HOCUS-FOCUS

BY HENRY BOLTIHOFF



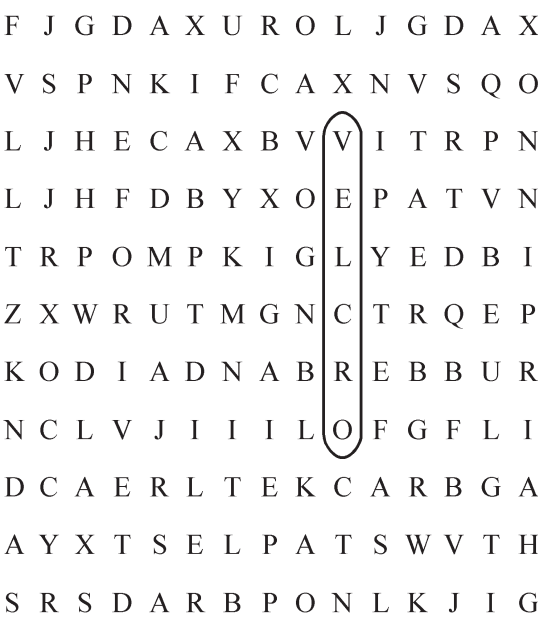
Find at least six differences in details between panels.



Differences: 1. Cap is smaller; 2. Arm is missing; 3. Football is missing; 4. Cloud is missing; 5. Horn is smaller; 6. Bull's tail is missing.

24 HOCUS FOCUS puzzles \$3.50 • 24 Volumes • Order at: rbmall.com

MAGIC MAZE • HOLDING IT TOGETHER



Find the listed words in the diagram. They run in all directions forward, backward, up, down and diagonally

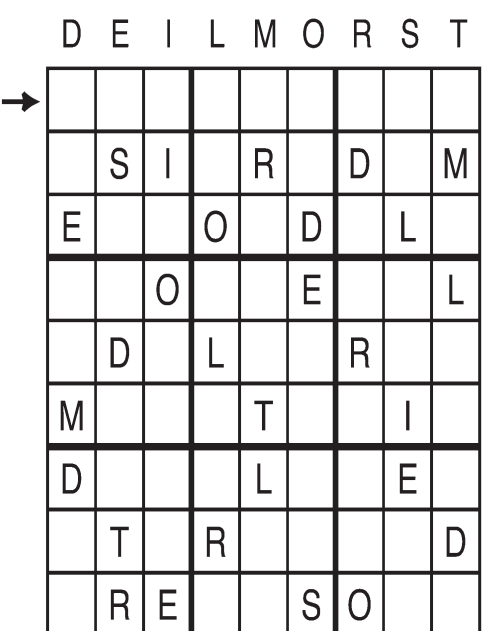
- | | | | |
|----------|---------|-------------|--------|
| Band-Aid | Clamp | Rivet | String |
| Bolt | Glue | Rubber band | Tack |
| Bracket | Hairpin | Safety pin | Velcro |
| Brads | Nails | Staples | |

©2017 King Features Syndicate, Inc. All rights reserved. Find More Word Search Puzzles • 6 Volumes \$3.50 ea. • Order at: rbmall.com

Letter Box

by Linda Thistle

Place a letter in the empty boxes in such a way that each row across, each column down and each small 9-box square contains all of the letters listed above the diagram. When completed, the row indicated will spell out a word or words.



© 2010 King Features Synd., Inc.

Salome's Stars

ARIES (March 21 to April 19) Although you love being the focus of attention, it's a good idea to take a few steps back right now to just watch the action. What you see can help with an upcoming decision.

TAURUS (April 20 to May 20) "Caution" continues to be your watchword this week, as a former colleague tries to reconnect old links. There are still some dark places that need to be illuminated.

GEMINI (May 21 to June 20) Making a good first impression is important. Revealing your often hidden sense of humor can help you get through some of the more awkward situations.

CANCER (June 21 to July 22) Taking that Cancer Crab image too seriously? Lighten up. Instead of complaining about your problems, start resolving them. A friend would be happy to help.

LEO (July 23 to August 22) A widening distance between you and that special person needs to be handled with honesty and sensitivity. Don't let jealousy create an even greater gap between you two.

VIRGO (August 23 to September 22) Congratulations. Your handling of a delicate family matter rates kudos. But no resting on your laurels just yet. You still have to resolve that on-the-job problem.

LIBRA (September 23 to October 22) You might surprise everyone by being unusually impulsive this week. But even level-headed Libras need to do the unexpected now and then.

SCORPIO (October 23 to November 21) A period of turmoil gives way to a calmer, more settled environment. Use this quieter time to patch up neglected personal and/or professional relationships.

SAGITTARIUS (November 22 to December 21) A new relationship could create resentment among family and friends who feel left out of your life. Show them you care by making more time for them.

CAPRICORN (December 22 to January 19) Concentrate on completing all your unfinished tasks before deadline. You'll then be able to use this freed-up time to research new career opportunities.

AQUARIUS (January 20 to February 18) You're right to try to help colleagues resolve their heated differences. But keep your objectivity and avoid showing any favoritism 'twixt the two sides.

PISCES (February 19 to March 20) Your personal life continues to show positive changes. Enjoy this happy turn of events, by all means. But be careful not to neglect your workplace obligations.

BORN THIS WEEK: People of all ages look to you for advice and encouragement. You would make an excellent counselor.

R.F.D.



by Mike Marland

Amber Waves



by Dave T. Phipps

The Spats



by Jeff Pickering

© 2017 King Features Synd., Inc.