

**Eric Baker**  
Estill County Extension Agent for Agriculture & Natural Resources

Lice can suck the profits out of beef cattle herds during the winter. These cold-loving pests spread when animals bunch together in response to frigid temperatures. Infestations of biting and sucking lice have been associated with reduced

# Cattle Lice Can Reduce Profits

weight gains and general unthriftiness of cattle. The economic impact of these small insects has been very difficult to assess. However, it appears that an average of 10 or more per square inch are necessary to have a significant effect.

You can reduce potential lice problems on cattle by keeping new animals separate from your herd until you've given them a thorough louse treatment, generally two applications of a contact insecticide.

The first application kills active adults and immature lice, but it won't destroy nits on the hide. A second application targets new hatchlings from the nits and any other lice still around. Be sure to follow

the label instructions on treatment intervals. After these two treatments, you can add new animals to the herd with minimal chance of lice problems during the winter.

Don't use systemic insecticides during the winter unless you know the treatment history of newly bought cattle. This is because migrating grubs might be in sensitive locations and cause an adverse reaction this time of year.

Treat all animals in the herd with approved pour-on, spot-on, or spray-type chemicals. This treatment will kill all active forms but will not kill the eggs. Retreat the entire herd 14 to 21 days later, except for products that require

a longer interval between applications. This should completely eliminate lice on the herd. A louse-free herd can be maintained if all new animals are treated twice before being added to the herd.

For a list of cattle lice control products, see UK Extension publication ENTFACT-512 online at <https://entomology.ca.uky.edu/ef512> or ask for a copy at the Extension office. For details on lice and other insect pests, call us at 723-4557.

Educational programs of the Cooperative Extension Service serve all people regardless of economic or social status and will not discriminate on the basis of race, color, ethnic origin, national origin, creed, religion, political belief, sex, sexual orientation, gender identity, gender expressions, pregnancy, marital status, genetic information, age, veteran status, or physical or mental disability.

## Wishing Well®

4 3 8 6 3 6 4 3 4 2 6 8 3  
D P A C O H O I M C E N S  
2 4 6 8 4 3 7 4 3 7 4 2 3  
O E E E S E V T D A I M F  
4 7 3 5 4 6 8 2 3 7 5 6 8  
C L O B H R W F R U E F A  
6 2 6 5 8 3 4 2 7 5 8 3 2  
U O L O W V A R E R A I T  
5 4 3 6 5 3 7 8 5 3 5 2 5  
I R C D G T F R I O N A A  
6 3 6 5 8 4 8 2 7 3 2 4 8  
A R Y L E M N S R Y S O E  
7 4 2 7 4 8 7 2 7 8 7 2 2  
I N U E Y S N R D S S E D

HERE IS A PLEASANT LITTLE GAME that will give you a message every day. It's a numerical puzzle designed to spell out your fortune. Count the letters in your first name. If the number of letters is 6 or more, subtract 4. If the number is less than 6, add 3. The result is your key number. Start at the upper left-hand corner and check one of your key numbers, left to right. Then read the message the letters under the checked figures give you.

©2018 King Features Syndicate, Inc. All rights reserved.

## CryptoQuip

This is a simple substitution cipher in which each letter used stands for another. If you think that X equals O, it will equal O throughout the puzzle. Solution is accomplished by trial and error.

Clue: E equals N

JIZMMQJ MFEO ZGFCY

MFLKGFVP'M RUKEJA RUQKEV

HQKTKV CEVKU Z EQOAYYQLK OIFT:

"LFFE FHKU LP ZLQ."

©2018 King Features Synd., Inc.

CryptoQuip puzzles \$3.50 • 24 Volumes • Order at: [rbmamall.com](http://rbmamall.com)

## CryptoQuote

AXYDLBAAXR  
is LONGFELLOW

One letter stands for another. In this sample, A is used for the three L's, X for the two O's, etc. Single letters, apostrophes, the length and formation of the words are all hints. Each week the code letters are different.

DUT QBJTMOKTOD VBRFDHBO

DB X EMBARTK HV FVFXRRC

XV AXZ XV DUT EMBARTK.

— KHRDBO PMHTZKXO

©2018 King Features Synd., Inc.

New! CryptoQuote puzzles \$3.50 • 6 Volumes • Order at: [rbmamall.com](http://rbmamall.com)

# Puzzle Answers

January 10, 2018

### Puzzles4Kids

Answer

HEART NEPHEW  
ELL CH EATHER ASHER  
LO HED EATE SHEE  
CHEER CHEST  
ASH HE OTHERS  
HYPHEN EIR EEE  
W SHED ANTHEM HEAP

### FEAR & KNIGHT

answer

H  
DUO F  
I R O U T D O  
LANCE A  
U A A L  
T F A L T E R  
E A S T O  
N A

### Letter Box

Solution

T	N	U	C	I	G	A	H	O
A	H	C	O	U	T	G	N	I
O	G	I	H	N	A	U	T	C
N	T	G	A	C	O	I	U	H
U	O	H	N	T	I	C	G	A
I	C	A	U	G	H	T	O	N
C	A	N	G	O	U	H	I	T
H	U	T	I	A	N	O	C	G
G	I	O	T	H	C	N	A	U

### Even Exchange

answers

- Twins, Twine
- Really, Really
- Apiary, Aviary
- Wafer, Wager
- Minor, Minot
- Otter, Utter
- Decent, Deceit
- Grass, Glass
- Forty, Forte
- Kitten, Mitten

### Weekly SUDOKU

Answer

1	2	6	4	7	5	3	8	9
9	8	4	1	3	2	5	6	7
7	3	5	8	6	9	2	1	4
4	1	7	2	5	8	9	3	6
3	6	9	7	1	4	8	5	2
8	5	2	3	9	6	4	7	1
6	9	8	5	2	1	7	4	3
2	4	3	6	8	7	1	9	5
5	7	1	9	4	3	6	2	8

### King Crossword

Answers

Solution time: 27 mins.

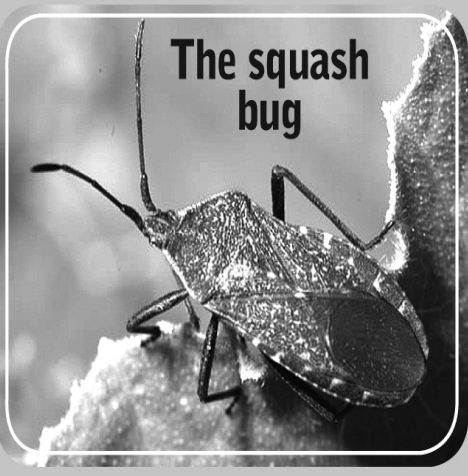
M	A	T	P	R	O	S	O	D	A	S		
A	L	E	R	E	M	I	N	E	R	T		
C	A	M	P	A	G	A	N	C	E	N	C	Y
A	M	P	A	G	A	N	C	E	N	C	Y	
W	O	O	D	N	A	G	T	E	A	L		
P	U	N	N	Y	A	D	O	P	T			
E	M	O	T	E	D	B	R	A				
A	P	S	E	A	G	A	L	O	R	E		
E	M	A	C	I	A	T	E	D	E	Y		
R	O	B	O	T	T	E	D	R	O	C		
A	B	A	T	E	A	N	Y	A	N	T		

### Bible Trivia Answers

Now available by Wilson Casey! 2017 Bible Trivia box calendar loaded with daily teasers.

## The Garden Bug

Adult squash bugs spend the winter months hiding in sheltered places.



The squash bug

Emerging in the spring, they look for squash and pumpkin plants to feed on the leaves and stems and also to lay eggs.

Plants can be easily destroyed from extensive feeding by these pests.

To trap them, leave boards or newspaper out near infested plants; squash bugs will congregate under them at night. In the morning, collect the bugs from their hiding places and destroy them.

Source: [ww.extension.umn.edu/garden/insects](http://ww.extension.umn.edu/garden/insects)

- Brenda Weaver

## Birding BITS

BY Cindy Brook

**Water in the Winter**  
Jacque from Wyoming knows the importance of birds and water, so he bought a dog dish with heater under it to make sure the birds have plenty during the winter months. The dish is 4 inches deep and 10 inches wide and is placed near (not under) his birdfeeders. Thanks, Jacque!

E-mail: [birdingbits@cflrr.com](mailto:birdingbits@cflrr.com)

©2018 King Features Syndicate, Inc.

# Farming News

from Extension Agent Eric Baker

Thursday, January 18th @ 6pm

## Cattle Producer Meeting

Estill County Cooperative Extension and Estill County Cattlemen's Association will host a cattle producers meeting on Thursday, January 18th, 6:00 p.m. at the Estill County Extension office. Our guest speaker will be UK Beef Extension specialist Dr. Jeff Lehmkuhler who will discuss cow/calf nutrition and stocker cattle care. The Estill County Cattlemen Association will have their business meeting afterward. Bluegrass Stockyards of Richmond is sponsoring the catered meal, so please pre-register by calling 723-4557 on or before January 12th. For more information, contact the Estill County Cooperative Extension Service at 723-4557.

Tuesday, January 23rd @ 8:30am

## Marketing Locally Grown Meats

The Kentucky Center for Agriculture and Rural Development's (KCARD) is hosting a Marketing Locally Grown Meat Workshop on Tuesday, January 23rd at the Morgan County Cooperative Extension office, 1002 Prestonsburg Street, West Liberty, KY 41472. The workshop will begin at 8:30am EST with registration, and will last until 4:00pm EST. Lunch will be provided for participants. The workshop costs \$15 per person, which includes the cost of the food and educational materials. Call (859) 550-3972 to register.

Wednesday, January 24th @ 7pm

## Farmers Market Meeting

The Estill County Farmer's Market Association will have their first organizational meeting of 2018 on Wednesday, January 24th, 7 p.m., at the Estill County Extension office. The market is looking for new members to help supply wholesome produce to the community. If you have questions, contact Hannah Eaton at 726-0679 or the Estill County Farmer's Market page on Facebook.

Order by Friday, January 19th

## Apple Rootstock Orders

The Estill County Cooperative Extension Service will be ordering apple and pear rootstocks in January. If you want to propagate a favorite apple or pear, grafting is one of the easiest ways to preserve that cultivar. We typically order Malling7 (55% of standard size) and/or MM.111 (80% of standard) semi-dwarf apple rootstock and a pear rootstock. Please pre-pay your order by January 19th. The rootstocks usually arrive in late February. For more information, contact the Estill County Extension office at 723-4557.

# Stickeler's Puzzle

STICKELERS [sic]  
by Terry Stickels

How many people is:  
"Two pairs of twins twice and then squared, then cubed?"

©2018 King Features Syndicate

Stickeler's Answer on Page 11

# Announcement

## Here's the drug problem I have:

I had a drug when I was a child and teenager. I was 'drug' to church on Sunday morning. I was 'drug' to church on Sunday night. I was 'drug' to church on Wednesday night. I was 'drug' to Sunday School every week. I was 'drug' to Vacation Bible School. I was also 'drug' to the woodshed when I disobeyed my parents.

Those drugs are still in my veins, and they affect my behavior in everything I do, say and think. They are stronger than cocaine, crack or heroin. If more children had this 'drug' problem, American would certainly be a better place.

-- from the Boogertown Polk Warden

**Automotive keys and fobs** • **Sidewinder keys cut & programmed, even if all keys are lost.**

**Regular side cuts** • **Residential work** • **Cut from code.**

**LOCK BUSTER**

Adrian McKinney  
Residential & Automotive LOCKSMITH

Home: 606 726-9243 • Cell: 859-534-8931  
265 Sugar Hollow Rd. • [adrmckinney@portonmail.com](mailto:adrmckinney@portonmail.com)

**Jimmie L. Johnson, DMD, PSC**

**Family Dentistry**

**87 Wildwood Place (off Court St.)**  
**Irvine, Kentucky**  
**(606) 723-3213**