

Jay Bicknell's Wanderings from the Woods & Water
Page 13

The Estill Engineers improve to above .500
Page 12



Bellamy, Brewer, All-Tourney - Page 12



Betty Young's Times Remembered
Page 3

50¢
INC 3 TAX IN KY
0 4 8 7 9 2 0 4 5 5

The Estill County Tribune

EstillTribune.Com

VOLUME 36, NUMBER 27 WEDNESDAY, JANUARY 3, 2018 IRVINE & RAVENNA, KENTUCKY 40336 14 PAGES

Williams is sworn in as judge/executive

Kevin T. Williams was sworn in on New Year's Day as Estill County Judge/Executive by 23rd District Judge William "Bo" Leach. Williams was appointed by Gov. Matt Bevin late Wednesday to that position. He replaces Wallace Taylor whose resignation was effective December 31. Williams' parents, Tom and Nelle Williams, were present for the swearing in,

as well as his friends, magistrates, and several employees. Williams' father, Tom, was a long-term councilmember and mayor of Irvine. His mother, Nelle, is currently a member of the Irvine City Council. The new judge/executive served two terms on the Irvine City Council from 1990-94. He then served three consecutive terms as

magistrate on the Estill Fiscal Court until 2006. Williams worked as a firefighter and retired from Lexington-Urban County Government. He and another Estill Countian, Jon Wise, own Southeast Apparatus, a company which sells equipment and vehicles to fire and rescue departments. Williams now lives on a farm and raises cattle.

"I thank you all for the opportunity (to serve as judge/executive)," Williams said Monday. "The escalating financial difficulties and need for job growth in Estill County are key reasons why I am willing to make a return to fiscal court," said Williams in a press release from the governor's office.

Continued on Page 13



Kevin T. Williams was sworn in New Year's Day as Estill County Judge/Executive. He was appointed last Wednesday to fill the vacancy by Gor. Matt Bevin. The vacancy occurred when Judge/Executive Wallace Taylor announced his retirement at the end of 2017.

Irvine police capture jail escapee



Chris York, 32, of Estill County, a jail escapee, was captured by Irvine Police just after midnight on New Year's Day.

An inmate who escaped from the Powell County Detention Center was apprehended in Irvine on New Year's Day. "We were out in full force for New Year's Eve," said Irvine Chief Brad Smith. He said that was when a resident of Kirkland Avenue called dispatch around 7 p.m. saying he saw a man behind his residence who took off running. Officer Colton Lewis then observed a man on Kirkland Avenue who ran from him. "We didn't even know he was an escapee," Smith stated. The man was arrested at 12:43 a.m. near the intersection of Church and Court Streets, Smith stated. He was identified as 32 year old Chris York of Drowning Creek Road, Irvine. Chief Smith said that York will be charged with escape in Powell County. He was returned to the Powell County Jail.

The Powell County jailer had reported that York had escaped on Saturday by walking away while taking out garbage. Smith said that it was his understanding that York was in the Powell County Jail on a meth charge. Chief Smith said while they were searching for a suspicious man, the officers continued to keep an eye out for impaired drivers. Several arrests were made for driving under the influence and alcohol offenses. Officers from the Kentucky State Police, Estill County Sheriff's Department, Ravenna Police Department and Irvine Police Department were on duty Sunday evening. Smith said while they were canvassing the area, looking for a suspicious man, they found someone in a vehicle who may have been waiting for York. He added that charges may be pending as the result of that investigation.

Senior center gets a new director

B.J. McGee was named last Wednesday by then Judge/Executive Wallace Taylor as the new director of Estill County Senior Citizens Center. She has worked at the center for two and a half years, most recently in charge of the home care program. McGee replaces Diana Riddell who took a job as a dispatcher in Madison County. Riddell had worked at the Estill County Center for about ten years, of which the last two and a half as director. Before that, Riddell had worked about ten years as a dispatcher in Estill County. "We're not hiring anybody else, so our staff is down a person," McGee stated. Besides McGee, the center has two home care aides, a Meals on Wheels delivery person, and an outreach coordinator. The center's staff is

supplemented by a worker from Good Will, which was formerly known as Green Thumb Organization and Experience Works. Frances Friend, a retired nurse, is the Good Will worker. She has a little over a year on her term with Good Will, but she said she will continue coming to the center after that term ends. McGee said the center also utilizes KTAP workers. One of them currently provides janitorial services for the center. On week days, the center is open to senior citizens ages 60 and over who come for fellowship and a free meal at 11:30 p.m. The center also celebrates holidays and takes field trips. McGee said their senior number is down right now because of the cold weather. She said the main thing they come for is the fellowship.



Senior citizens worked puzzles at the Estill Senior Citizens Center on Friday after playing Bingo while they were waiting for lunch to be served.



Williams comes from a long line of public servants. His father, Tom Williams, left, is a former Irvine mayor and council member. His mother, Nelle, is now serving on the Irvine council. Williams has also served on the council and as magistrate of the fiscal court.

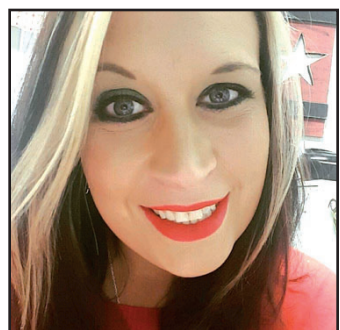
Lady Engineers Are Runner-Up At Gateway



The Estill County Lady Engineers improved to 4-7 while being named runner-up in the 10-team Gateway Holiday Classic played Thursday, Friday and Saturday. After trailing early, Estill closed within 10 points of Paul Lawrence Dunbar before falling 67-50 in the championship game. Earlier the Lady Engineers soundly defeated Bath County, 62-34; then squeaked by Nicholas County 59-58 to get into the title game. Amy Brewer scored 16, 18 and 18 in the three games. Current players include, left to right, Amy Brewer, Kiely Flynn, Emma Winkle, Savannah Brewer, Kaylee Riddell, Mary Robinson, Meaghan Bellamy, Mia Hale, Hannah Baker, and Hayley Angel. Not pictured are Britney Mason, Mariah Riddell, and Amelia Farmer who were injured or sick and couldn't participate. The team is led by first-year coach Ruth Hughes. See more in on Page 12 of The Estill County Tribune.

Obituaries

Mitchell Begley, 50
Bobby Carroll, 46
Jean Chapman, 86
Chester Cole, 74
Edith Stamper, 90
See Page 6
New Obits at EstillTribune.com



B.J. McGee was named director of the Estill County Senior Citizen Center by outgoing Judge/Executive Wallace Taylor. The center serves Estill Countians ages 60 and over in a variety of services including free meals, commodities, and home care.