



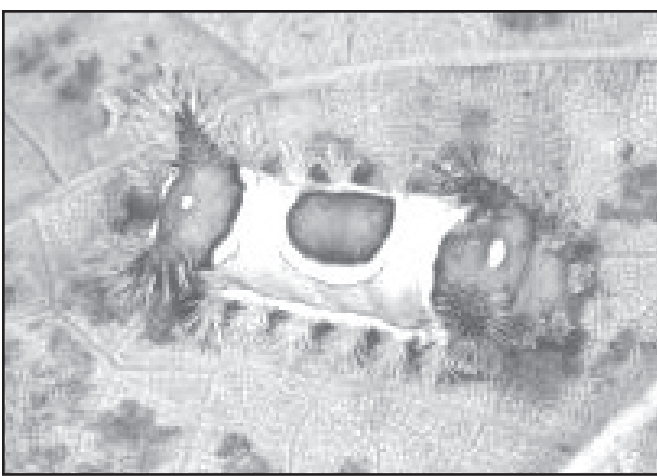
Eric Baker
Estill County Extension
Agent for Agriculture
& Natural Resources

Beware of Stinging Caterpillars

Contact usually comes when a person accidentally brushes against a caterpillar that they did not see.

The saddleback or packsaddle caterpillar is one of the most familiar stinging caterpillars. It has prominent horns on the front and rear. Its stings can cause severe irritation. Saddlebacks feed on deciduous trees such as basswood, chestnut, cherry, oak, and occasionally they can be found on corn.

Not all stingers provide a visual warning. For example, the hag moth caterpillar resembles a dried leaf. This brown caterpillar has nine pairs of fleshy lobes, all with stinging hairs. It is usually found on lower branches of assorted trees and shrubs, including oak, chestnut, dogwood, sasfras, and ash.



Saddleback Caterpillar
Courtesy of UK Department of Entomology

The tiny spines may be lifted from the skin with pieces of masking tape applied to the site. Do not rub the area until they are removed. Wash the wound with soap and warm water. Place an ice pack or cold compress on the wound intermittently (15 minutes on and 15 minutes off). See a physician if there is a severe or persistent reaction to the toxin.

More information on stinging caterpillars is on the UK Entomology webpage at <https://entomology.ca.uky.edu/ef003> or call the Estill County Extension office at 723-4557.

Educational programs of the Co-operative Extension Service serve all people regardless of economic or social status and will not discriminate on the basis of race, color, ethnic origin, national origin, creed, religion, political belief, sex, sexual orientation, gender identity, gender expressions, pregnancy, marital status, genetic information, age, veteran status, or physical or mental disability.

Farming News

Attention Cattle Producers: Beef Bash is Sept. 26th

Beef Bash 2019, a unique field day for Kentucky beef cattle producers, will take place September 26 at the University of Kentucky's C. Oran Little Research Farm in Versailles. UK College of Agriculture, Food and Environment, the Kentucky Beef Integrated Resource Management Program, and the Kentucky Cattlemen's Association will host the event.

Since 2008, the bash has been at the UK Research and Education Center in Princeton, but organizers wanted to reach more producers. Going forward, Beef Bash will annually rotate between the Western and Central Kentucky locations.

"Research and outreach efforts such as Beef Bash are an important means of providing up-to-date information to cattle producers," said Benjamin Crites, UK Beef IRM program coordinator. "This is Kentucky's premier beef field day, and we will have something for all producers, from those just starting out to those who've been in the industry for decades."

Participants will have a chance to see all the beef research facilities at the UK farm and enjoy an interactive, lightly structured, come-and-go field day.

Hands-on activities, demonstrations and educational exhibits will be scattered around the beef research unit. A large tent will house commercial

exhibits and serve as a focal point for activities. Research and extension specialists, extension agents and industry representatives will be on hand to answer questions.

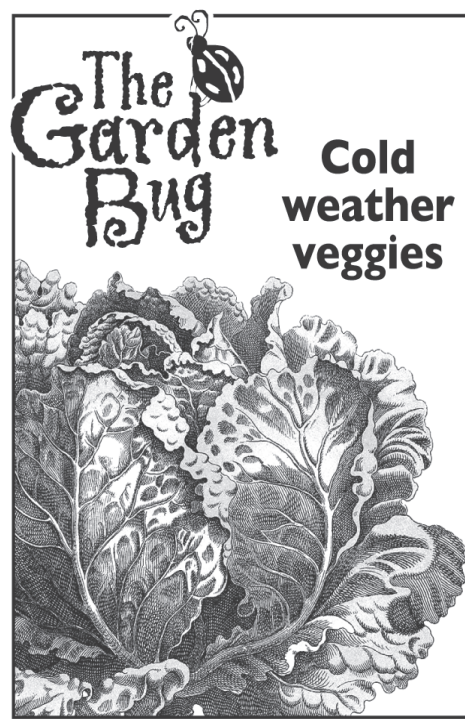
"This field day is a great opportunity to learn more about current issues and to talk with fellow beef cattle producers," Crites said. "We will have various how-to demonstrations related to extending the grazing season, evaluating cattle feet/leg structure, utilizing co-product feeds, mineral interactions, composting management and infrastructure design. We'll spend more time doing than talking."

Registration begins at 8:30 a.m. EDT, and programs and tours start at 9 a.m. No preregistration is required, and lunch will be available for purchase. The bash concludes at 3 p.m.

Rinse & Return Program is Sept. 30th

The Rinse and Return Plastic Pesticide Container Recycling Program will be offered once again in Estill County this fall. This Kentucky Department of Agriculture program collects triple-rinsed, plastic pesticide containers for recycling. All farmers are encouraged to participate. Please remember, pesticide containers must be triple-rinsed, label packets removed, and no lids should be present. All containers received will be inspected.

The 2019 Rinse and Return collection date is Monday, September 30th, 1:00 p.m. to 3:00 p.m. at the Estill County Extension Office, 76 Golden Court (off Stacy Lane) in Irvine. For more information, call 723-4557.



The Garden Bug Cold weather veggies

For growing vegetables in the cooler months, it's important to:

- Consult local garden authorities or county extension agents for the average date of the first hard frost in your region.
- Understand the growing time needed for each of your vegetables (30 days? 60 days? 90 or more?).
- Plant your crops at the right time so they can reach their full maturity before that killing frost.

- B. Weaver

Source: www.humeseeds.com/falwint

© 2019 by King Features Syndicate, Inc. World rights reserved.



Birding BITS BY Cindy Brook

Birdseed Tips

1. Freeze seed for a full 24 hours to kill bugs, moths and other creepy-crawly things and their eggs.
2. Use hulled sunflower hearts or chips to avoid messy hulls and sprouts under your feeders.
3. Don't stockpile. Seed that sits around for long periods of time can attract bugs, moths, even rats. Keep it fresh!

E-mail: birdingbits@cfl.rr.com
© 2013 King Features Syndicate, Inc.

Wishing Well®

2	3	7	6	3	7	4	5	4	2	3	4	5
T	G	S	F	E	E	B	K	E	A	T	C	N
2	8	6	2	7	3	7	6	7	2	3	6	3
K	K	U	E	C	B	U	N	R	T	A	A	C
6	3	8	5	8	2	5	8	7	6	5	2	5
F	K	E	O	E	H	W	P	E	T	Y	E	O
6	2	7	6	5	4	2	8	7	2	8	5	7
E	I	L	R	U	O	N	O	I	N	R	V	
2	8	3	8	6	3	6	8	4	3	4	8	2
T	W	T	I	H	O	N	N	B	G	N	I	
5	8	4	5	2	8	5	6	7	6	5	4	3
S	I	E	E	A	N	L	U	E	R	F	N	A
4	2	3	6	8	3	2	3	2	3	4	2	4
I	T	S	S	G	I	C	V	S	A	E	L	

HERE IS A PLEASANT LITTLE GAME that will give you a message every day. It's a numerical puzzle designed to spell out your fortune. Count the letters in your first name. If the number of letters is 6 or more, subtract 4. If the number is less than 6, add 3. The result is your key number. Start at the upper left-hand corner and check one of your key numbers, left to right. Then read the message the letters under the checked figures give you.

©2019 King Features Syndicate, Inc.

CryptoQuip

This is a simple substitution cipher in which each letter used stands for another. If you think that X equals O, it will equal O throughout the puzzle. Solution is accomplished by trial and error.

Clue: X equals P

ZH XLRXCL CRKL CZKZFB ZF
OEZDZTI WXWEDSLFDT, Z
BALTT DIWD TIRACQ OL
DLESLQ "ZFHCWDAWDZRF."

©2019 King Features Synd., Inc.

CryptoQuote

AXYDLBAAXR
is
LONGFELLOW

One letter stands for another. In this sample, A is used for the three L's, X for the two O's, etc. Single letters, apostrophes, the length and formation of the words are all hints. Each week the code letters are different.

DI OFX'ZK LFU YMRDLJ NFKY
LFUMHTK YDNUMRKN MFTLJ
UGK AMO, OFX'ZK BKZUMDLTO
LFU UMRDLJ KLFXJG HXNDLKN
MLW BMZKKZ BGMLBKN.
- NMTTDK RZMABGKBR

©2019 King Features Synd., Inc.

Puzzle Answers

August 21, 2019

Puzzles4Kids

Answer

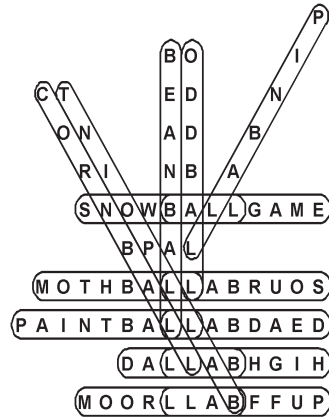
MAIDEN A MINED
STRIPE F TIRES
LOSING I LONGS
CANTER N REACT
EATERS E RATES
TOMATO A MOTTO
TRIPLE P LITER
RIPPED P PRIED
CLEARS L SCARE
SALINE E SLAIN

Letter Box

Solution

O	T	W	I	H	G	N	S	M
N	S	G	W	O	M	H	T	I
I	M	H	S	N	T	G	W	O
S	G	N	M	T	I	O	H	W
M	O	T	H	S	W	I	N	G
H	W	I	O	G	N	S	M	T
W	H	M	G	I	S	T	O	N
G	N	O	T	W	H	M	I	S
T	I	S	N	M	O	W	G	H

WORDS HAVING A BALL



CryptoQuip

answer

If people love living in British apartments, I guess that should be termed "inflatuaton."

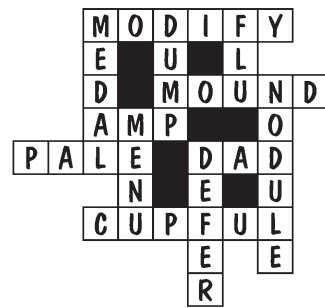
CryptoQuote

answer

If you're not making some notable mistakes along the way, you're certainly not taking enough business and career chances.
- Sallie Krawcheck

FEAR & KNIGHT

answer



Even Exchange

answers

1. Wilma, Willa
2. Dancer, Danger
3. Board, Beard
4. Ascent, Assent
5. Creek, Creed
6. Singer, Sinner
7. Brave, Crave
8. Short, Shirt
9. Model, Motel
10. Burner, Burger

Weekly SUDOKU

Answer

1	5	4	6	7	3	8	9	2
3	9	7	2	8	5	1	6	4
8	6	2	9	1	4	7	3	5
6	3	5	4	2	8	9	7	1
2	1	8	3	9	7	4	5	6
7	4	9	1	5	6	3	2	8
5	7	3	8	4	2	6	1	9
4	2	1	7	6	9	5	8	3
9	8	6	5	3	1	2	4	7

King Crossword

Answers

Solution time: 21 mins.

I	N	C	A	A	M	P	G	E	M	S	
T	E	R	R	A	R	I	A	A	T	O	P
S	T	U	R	G	E	O	N	L	A	V	A
C	H	I	N	A	I	S	T	O			
R	U	N	T	S	T	U	M	P	E	R	
Y	E	S	A	N	A	I	S	P	H	I	
S	T	U	D	E	N	T	T	E	E	N	
G	O	A	D	W	R	E	A	K			
U	N	M	A	S	K	L	E	I			
S	O	O	N	S	T	U	B	B	O	R	N
E	G	A	D	B	A	R	B	E	C	U	E
R	O	N	A	Y	U	K	S	T	E	W	

Stickeler's Puzzle



ABCDEF x 4 = FEDCBA

What six digits work to make this a valid equation?

(HINT: You'll have to use at least one digit more than once.)

©2019 King Features Syndicate

Stickeler's Answer on Page 11

Sammy's Furniture

722 Main Street, Ravenna • 723-6562
Open MON-FRI 9-6 and SATURDAY 9-5

- Tables & Chairs (We do special orders!)
- New Mattresses and Box Springs
- New Bedroom Suites
- New Living Room Suites
- New Recliners & Lift Chairs

NO CREDIT? BAD CREDIT? NO PROBLEM!
EASY FINANCING BY

MERCHANTS PREFERRED
LEASE PURCHASE SERVICES

Free Delivery & Set Up



Bible Trivia Answers

Now available by Wilson Casey! 2017 Bible Trivia box calendar loaded with daily teasers.

ANSWER (1) Old; (2) Safe; (3) 1; (4) Pigsah; (5) His law; (6) Cut off his head (Goliath's)