



TUESDAY MORNING / AFTERNOON, JULY 1, 2014 - 10 A.M. - 6 P.M.

## DIVISION A - 4-H WOOD SCIENCE

**4-H WOOD SCIENCE****Committee:** Mickie Conrad, Chairperson**WOODWORKING Woodworking (Beginners Level I)**

- \*2100. Woodworking I - any article not made from a kit (beginners)
- \*2101. Woodworking I - any article made from a kit (beginners)
- \*2102. Woodworking II - any article made from a kit (more advanced assembly)
- \*2103. Woodworking II - any article not made from a kit (more advanced assembly (hopper bird house, puzzle, foot stool, cutting board, etc)
- \*2104. Woodworking III - any article not made from a kit (larger more elaborate article such as garden bench, planting box, nail and tool box, etc.)

*This exhibit is to be made up of two parts:*

- 1) The item, and
- 2) A folder containing photographic documentation of the steps taken in order to complete this exhibit.

- \*2105. Woodworking IV - No kit (furniture quality finish, mastery of joint construction and use of special woods, and finishes. (Examples: checker board-room divider, coffee table, gun rack, cabinet, etc.)

*This exhibit is to be made up of two parts:*

- 1) The item, and
- 2) A folder containing photographic documentation of the steps taken in order to complete this exhibit.

- \*2106. Woodworking IV- No kits, do not have to have a fine finish, (painted finish allowable) because of practical use. Items demonstrate knowledge of all woodworking techniques learned in previous levels. Items showing a mastery of cutting, drilling, joint construction, use of special woods, and appropriate finishes. (Examples: porch swing, picnic table, lawn chair, etc)

*This exhibit is to be made up of two parts:*

- 1) The item, and
- 2) A folder containing photographic documentation of the steps taken in order to complete this exhibit.

## 2107. Miscellaneous Woodworking

**SMALL DECORATED WOODCRAFT ITEMS -UNDER 6" - NO KITS***These items are not intended to display carpentry skills but to express artistic creativity. (Anything that has been sawed or fastened together, see classes 2100-2107)*

- |                 |                               |
|-----------------|-------------------------------|
| 2108. Flag      | 2109. Pumpkin                 |
| 2110. Heart     | 2111. Truck/Car/Boat/Airplane |
| 2112. Birdhouse | 2113. Snowman                 |
| 2114. Flower    | 2115. Clovers                 |
| 2116. Angel     | 2117. Animals                 |
| 2118. Box       | 2119. Miscellaneous           |

**SMALL DECORATED WOODCRAFT ITEM - 6" OR OVER - NO KITS***These items are not intended to display carpentry skills but to express artistic creativity. (Anything that has been sawed or fastened together, see classes 2100-2107)*

- 2120. Plaque/Wall Hanging
- 2121. Birdhouse
- 2122. Flower
- 2123. Door Hanging
- 2124. Flag
- 2125. Animals
- 2126. Clovers
- 2127. Pumpkin
- 2128. Truck/Car/Boat/Airplane
- 2129. Box
- 2130. Miscellaneous

**Have fun at the Estill County Fair!**

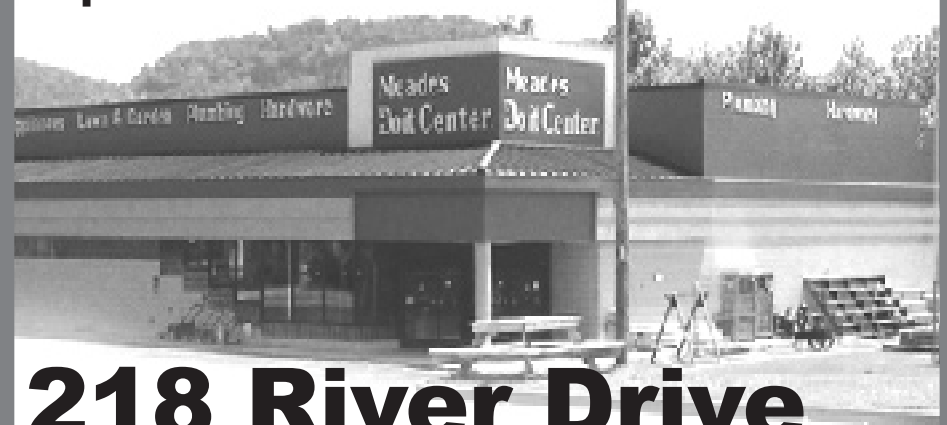
**Estill Clinic**  
**Health Mart**<sup>®</sup>  
 PHARMACY

**606-723-0044****275 Court Street, Irvine**

**Irvine**  
**Health Mart**<sup>®</sup>  
 PHARMACY

**606-723-5446****905 Richmond Road, Irvine****Meade's 723-2163****Do-it center**<sup>®</sup>

Welcome to Meades Do it Center. We are a full-service hardware store, that strives to provide the best in customer service!



**218 River Drive**  
**in Irvine, Kentucky**